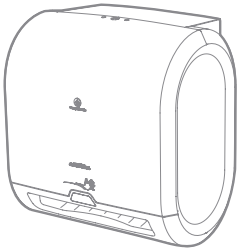




REPLACEMENT PART INSTRUCTIONS FOR 59498A, 59497A, 59437A

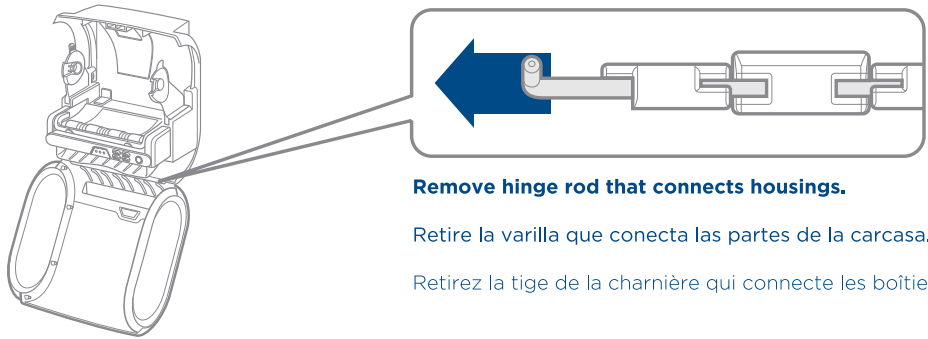


Use these instructions for help with replacing parts on the GP PRO enMotion® Impulse® 8" 1-Roll Automated Touchless Roll Paper Towel Dispenser.

Use estas instrucciones para reemplazar piezas del dispensador automático por aproximación del rollo de toallas de papel GP PRO enMotion® Impulse® 8".

Utilisez ces instructions pour le remplacement d'éléments sur le distributeur de papier essuie-mains automatique sans contact GP PRO enMotion® Impulse® 8" 1 Rouleau.

Cover | Portada | Couverture

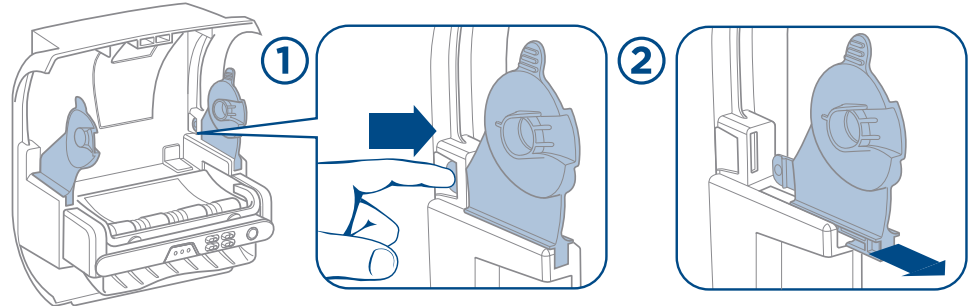


Remove hinge rod that connects housings.

Retire la varilla que conecta las partes de la carcasa.

Retirez la tige de la charnière qui connecte les boîtiers.

Roll Holders | Sujetadores de rollo | Supports à rouleau



Chassis | Chasis | Châssis

