



# JAN/SAN

**Smart Solutions for Business Growth**

**- 2020 Catalog -**



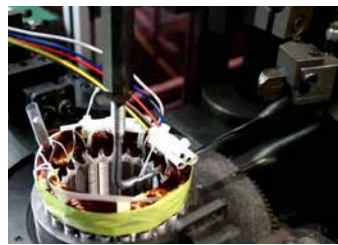
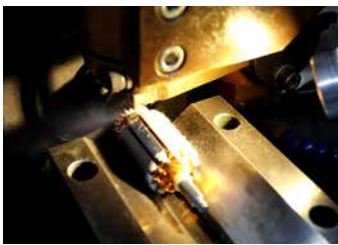


## Who We Are

- XPOWER Manufacture Inc. has over 25 years of experience developing professional grade products with the most advanced technology in the market.
- Our industry leading products foster long-term relationships with our business partners, as evidenced by our ever-growing global distribution network.
- We pride ourselves on providing partners with a first-class customer experience; our customer service team offers product support and parts assistance for distributors and end users.

## Precision Manufacturing

- XPOWER's R&D engineers create fully integrated designs for innovative products that are lightweight, quiet, rugged and affordable – all without sacrificing power or durability.
- XPOWER equipment meets the highest production standards in the industry. Our pro-grade tools use thermally protected motors that have globally recognized safety certifications.
- Our world-class factory meets the rigorous standards required by big box retailers – ensuring that product quality standards and ethical working conditions are maintained.





**INDUSTRIES SERVED** ..... pg 4 - 5  
**XTREME DRY** ..... pg 6 - 9  
**RESTORATION SCHOOLS** ..... pg 10  
**PEST CONTROL** ..... pg 11

**DEHUMIDIFIERS**

- XD-125 ..... pg 12  
 - XD-85LH ..... pg 13

**AIR MOVERS**

- P-80A / P-130A ..... pg 14  
 - P-230AT / 400 Series ..... pg 15  
 - P-630 / P-630HC ..... pg 16  
 - 800 Series ..... pg 17  
 - P-260NT / P- 450NT ..... pg 18  
 - PL-700A / XL-730A ..... pg 19  
 - FD-650DC ..... pg 20  
 - X-35AR / X-48ATR ..... pg 21  
 - P-21AR / P-26AR ..... pg 22  
 - X-39AR / X-47ATR ..... pg 23

**AIR SCRUBBERS**

- X-2480A / X-2580 ..... pg 24  
 - X-3400A / X-3580 ..... pg 25  
 - X-4700A / X-4700AM ..... pg 26 - 27

**MULTI PURPOSE BLOWER**

- A-2 ..... pg 28  
 - A-5 ..... pg 29

**SPECIFICATIONS** ..... pg 30 - 36

## Industries Served

XPOWER professional grade equipment offers the widest selection and most adaptable features for a variety of drying, air purification, and humidity control needs. Tested to meet the rigorous demands of the Water Damage Restoration Industry, XPOWER products leads to less costs and higher customer satisfaction on each and every job requiring a fast, complete professional finish.

Our complete line handles drying challenges from small areas like closets, to small or large rooms to narrow hallways that require directed/controlled air flow for drying.

## Professional

WATER DAMAGE RESTORATION



JAN / SAN



INSTITUTIONAL



FOOD SERVICE



HOSPITALITY



CONSTRUCTION / SAFETY



HEALTHCARE



PLUMBING



CARPET CLEANING



## Consumer / DIY

Garage



Cooling



Automotive Detailing



IT Maintenance



## Jan / San Guide

XPOWER air movers are known as the most powerful, reliable, toughest, and least costly to purchase. Industry tested, XPOWER offers a wide range of models from mini 1/8 HP to full 1HP motor units. Featuring precision manufactured injection molding, this equipment is just as durable as the competition at over 30% less weight.

### Full Line of Centrifugals



P-80A



P-230AT



P-400



P-630



P-830H

### Dusting



### Axial Fans



X-39AR

X-47ATR

### Low Profile Air Mover



PL-700A

XL-730A

### Odor Eliminating Solutions

#### Scented Air Mover



P-260NT

#### X-2580A Air Scrubber w/ HEPA & Charcoal Filtration



### Humidity Management

#### XD-125



XD-85LH

# **XTREMEDRY™** **PRO DIY**

## **PROFESSIONAL DRYING SOLUTION**



Water may be necessary for life, but it can also damage your property if it gets into places it doesn't belong. Whether through a burst pipe, moisture trapped beneath walls, or a leaking roof, too much moisture left alone inside your building can lead to much bigger problems. If water damage isn't treated properly, and the drying process started within the first 24 hours after the initial damage, additional problems like mold and mildew can begin to set in.

Most businesses simply don't think about water damage until it's too late. And we understand why. With decades of industry experience, we've seen firsthand the difficulty businesses face choosing between cost efficient facility maintenance and forking over thousands of dollars for even the tiniest of water damage restoration jobs. Business owners face a dilemma between seeking professional treatment at a premium price and inadequately dealing with the situation with the tools they have on hand.

We want to change the status quo and help businesses save tens of thousands of dollars a year by offering them the same tools used by the professionals along with the education on how to use them. Our XPOWER XTREMEDRY® Pro-DIY drying solution gives you what you need to treat water damage from clean water sources, in house, and at a fraction of the cost of calling contractors.

# Water Damage Accidents



Water  
Overflow



Burst Water  
Pipe



Broken  
Sprinkler



HVAC Leaks



High Humidity  
Levels

**24<sub>hr</sub>**  
GOLDEN WINDOW

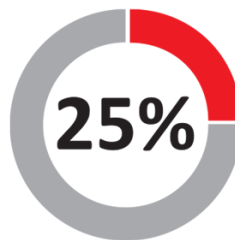
**25%**  
HUMIDITY LEVEL

**24<sub>hr</sub>**  
CONTINUOUS  
PROCESS



## **GOLDEN WINDOW** to prevent mold growth

Use the equipment within 24 hours of the water damage occurring.



## **HUMIDITY LEVEL** for an XTREMEDRY Environment

Our LGR dehumidifier can reduce relative humidity down to 25% to pull bound moisture out of tough-to-dry materials.



## **UNINTERRUPTED** drying process

Run our Pro-DIY tools for 24 uninterrupted hours to begin the process and get professional results.

# **XTREMEDRY™** **PRO** **DIY**

## **PROFESSIONAL DRYING SOLUTION**

### **What is the XPOWER XTREMEDRY™ Solution?**

The XTREMEDRY® solution is a 3-stage process that starts with our class leading LGR dehumidifier, which is capable of reducing the relative humidity level down to 25%. The ability to produce a desert-like environment in the room pulls bound moisture out of difficult to dry materials. Our air movers work in concert to lift moisture off the surfaces in the room for the LGR dehumidifier to remove. All the while, our commercial air scrubbers restore healthy air quality to the job site by removing contaminants with its advanced 3 to 4-stage filtration technology.



**Air Movers**

**LGR Dehumidifiers**

**Air Scrubbers**



### **HIGH R.O.I.**

Use our professional grade tools with a commercially proven drying method at a fraction of the cost of calling the restoration companies.



### **24/7 Preparedness**

Take immediate action and start a professional drying process as soon as the water damage occurs. Why wait to call a contractor and fill out insurance claims when water damage is spreading through your facility?



### **Prevention**

Our industry leading solution can be used as part of a preventative program in high humidity areas to remove remnants of moisture that can accrue and cause problems down the line.





## DEHUMIDIFICATION

### STEP 1

- » Dehumidification occurs by removing large quantities of airborne moisture with a LGR (Low Grain Refrigerant) dehumidifier.
- » LGR Dehumidifiers create an extreme dry environment by reducing the relative humidity of a room down to 25%.
- » The extreme dry environment pulls the hidden moisture from water saturated materials in the room to be treated.

### STEP 2

## EVAPORATION

- » Evaporation is the process in which liquid moisture is turned into vapor.
- » Our solution expedites evaporation of moisture by utilizing commercial strength XPOWER air movers to create rapid air movement.
- » XPOWER centrifugal, axial, and low profile air movers lift moisture off of wet surfaces and airborne moisture is dried by the LGR dehumidifier.



## PURIFICATION

### STEP 3

- » Our commercial air purification systems include the use of true HEPA filters rated to capture 99.97% of contaminants at 0.3 microns in size.
- » Capturing contaminants, including mold spores and allergens, is essential for preserving clean indoor air quality and property health.
- » Optional activated carbon filters remove unwanted odors caused by smoke, noxious gases, and organic carbon-based chemicals.

\*\*\*Disclaimer\*\*\* The XTREME Dry™ Concept is to be implemented in clean water scenarios. The Water Damage Restoration Industry refers to these types of water damage situations as a Category 1 Water Loss. "Category 1 - Category 1 water originates from a sanitary water source and does not pose substantial risk from dermal, ingestion, or inhalation exposure. Examples of Category 1 water sources can include, but are not limited to: broken water supply lines, tub or sink overflows with no contaminants; appliance malfunctions involving water-supply lines; melting ice or snow; falling rainwater; broken toilet tanks, and toilet bowls that do not contain contaminants or additives. However, once clean water leaves the exit point, it may not remain clean once it contacts other surfaces or materials."(Larry Cooper, Restoration & Remediation Magazine Publication March 2007 - <https://www.randrmagonline.com/articles/83600-the-standards-of-our-time-applying-icrc-categories-of-water-to-a-job-situation>)



## Bryan Brainerd - IICRC WRT, ASD, WRT/ASD

Bryan Brainerd has been in the Restoration industry for over 24+ years and a IICRC approved instructor since 2000. He has been teaching for 18+ years in courses such as, Water Restoration Technician (WRT), Fire Smoke Restoration Technician (FSRT), Applied Structural Drying Course (ASD), and the WRT/ASD Combo Course. Bryan Brainerd is an esteemed committee member on the IICRC, FSRT, ASD, WRT, and TAC committee.

Restoration Academy LLC was founded in 2012 by Bryan Brainerd. Bryan has been involved in restoration since 1994 and instructing since 2000. Prior to starting Restoration Academy, Bryan worked for Paul Davis (Franchisor) as the Director of Emergency Services, overseeing training and operation compliance with the network of franchises. Prior to Paul Davis, Bryan worked with ServPro of North Indianapolis as well as their Director/Trainership, consulting on a wide variety of restoration jobs. Bryan has developed training programs for employees, managers and owners of several restoration firms.



## Nate Seward

Our Primary Training Center maintains a comfortable and innovative opportunity to allow our students to get a true "hands on experience".

With multiple training rooms, our main training room will comfortably hold up to 30 students and our smaller training room which can hold up to 15 students if necessary. Our warehouse and testing center contains training modules with simulated residential and commercial settings to help provide the best real life situations possible.

We have numerous types of equipment for you to "play" with from the world's leading manufacturers in drying and restoration equipment. ATF does not endorse any manufacturer or brand, our mission is to provide our students with science-based technology facts, completely unbiased so that the student can make their own decision on what works best.



# RED HOT OPPORTUNITY



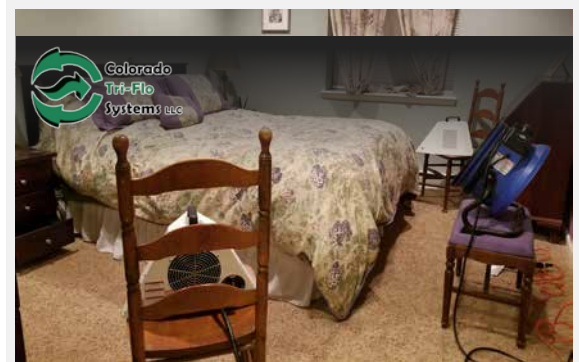
## HEATED APPLICATIONS

Creative minds are revolutionizing the industry with the implementation of equipment in a manner that is sure to generate revenue opportunities as well as lower out of pocket expenses!



X-35AR

BED BUGS are a problematic issue in the hospitality industry that results in costly exterminator expenses, lost revenue, and even lawsuits. Traditionally treated with chemicals, there is a more green and eco-friendly alternative being widely sought. Building service contractors, property management agencies, as well as independent hotel/motel owners are pairing XPOWER Heat Resistant Axial Fans with heating equipment designed specifically for bed bug remediation.



Using the XPOWER X-35AR Hi-Temp fan is a critical part of the Tri-Flo heating solution. These fans create a convection effect that facilitates killing bed bugs and dry out applications that require high temperature environments and airflow. -Ron E., Colorado Tri-Flo



TRI-FLO 325

### The XPOWER Heat Resistant Line of Axial Fans are all inclusive fans with key traits that include:

- Operating In Heated Environments Upwards to 180°F
- Efficient Low Amp Draw, Large Torque Sealed Motors
- Variable Speed Control, On-Board Daisy Chain Power Outlets, 3-Hour Timer (X-48ATR Only)
- Specially Designed Housing For Continuous Directional Air Movement
- Stand Included For Full Range 360° Tilt Positioning
- Lightweight And Stackable For Easy Transport/Storage

### Also suitable in other industry applications such as:

- Water Damage Restoration Industry
- Pest Control / High Temperature Air Movement
- Drying Carpets / Area Rugs
- Kitchens / Food Preparation Stations
- Dry Goods Manufacturing / Packaging
- Agricultural / Farming / Livestock



X-48ATR



# XD-125

76 PPD @AHAM



The XPOWER XD-125 Commercial Dehumidifier is designed to maximize water extraction while combining the highest efficiency in performance and portability. A rugged and compact design allows for easy storage, while the durable housing construction withstands rough handling. Semi-pneumatic wheels make transport and maneuver on job sites a snap. The XD-125's unique operating features make it the perfect machine for not only water damage restoration jobs, but also for a multitude of commercial and industrial applications where humidity control is required.

----- XD-125 Operating Features -----

- 76 pints/day @ AHAM (80° F, 60% RH)
- Space Saving Compact Design
- Pneumatic Wheels Maximize Transporting
- Rugged Handle Increases Maneuverability



WATER REMOVAL @AHAM (80°F/60%RH)	WATER REMOVAL FULL SATURATION (90°F/90% RH)	AMPS	WEIGHT	DIMENSIONS
76 Pints Per Day	125 Pints Per Day	7.3 A	81 Lbs.	20 x 19 x 32 in.





# XD-85LH

## 85 PPD @AHAM

LGR DEHUMIDIFIER



The XPOWER XD-85LH Large capacity compact LGR Dehumidifier is the latest in Advanced Humidity Control Technology. With a patented High Efficiency Dual Intake System, the XD-85LH has become the highest output Low Grain Refrigerant Dehumidifier in its class.

Boasting 85 PPD @ AHAM (80°F / 60% RH), this LGR Dehumidifier draws 6.7 amps and includes all the features you have come to expect from a professional grade manufacturer. A digital display, smart controls, integrated handles, and self-purging water pump makes this 65 LB 180 CFM powerhouse the dehumidifier of choice.

Commonly seen used in drying applications:

- Water Damage Restoration
- Carpet Cleaning / Hotel Hospitality
- Hardwood Floors / Ceramic Tiles
- Basements / Cellars
- Kitchens / Food Preparation Stations

### Collapsible Handle



### Stainless Steel Filter



Next Generation of LGR Dehumidifier Filters are now available! A Washable Stainless-Steel filter maximizes the performance of the XD-85LH with added protection against foreign matter that may cause damage passing through the intake.

Programmable Humidity & Digital Display

Power Cord/ Hose Storage



WATER REMOVAL @AHAM (80°F/60%RH)	WATER REMOVAL FULL SATURATION (90°F/90% RH)	AMPS	WEIGHT	DIMENSIONS
85 Pints Per Day	150 Pints Per Day	6.7 A	68 Lbs.	13.1 x 29.9 x 22.2 in.





## P-80A MIGHTY AIR MOVER

Ventilate and dry like a Pro at a fraction of the cost! The P-80A mighty air mover blasts up to 600 CFM while drawing only 1.2 Amps at its highest speed setting. This multipurpose air mover is a must have in hotel, business, home, garage, auto detailing, and any other small to mid-size drying scenarios.

- 4-angle drying positions
- Wrap-around cord design
- Built-in power outlets for daisy chain
- Lightweight, durable and stackable
- Low amperage draw with high airflow
- Compact design for tight spaces
- Quickly dry floors, kitchen cabinets, bathrooms, & more



MODEL#	VOLT / CYCLE	POWER	AMPS	AIRFLOW
P-80A	115V / 60Hz	138 W	1.2 A	600 CFM

## P-130A MIGHTY AIR MOVER

The HIGHLY VISIBLE P-130A mighty air mover blasts up to 800 CFM while drawing only 2.0 Amps. This multipurpose YELLOW air mover is a must have in HIGHLY TRAVELED WALKWAYS in hotel or business lobbies, walkways, and bathrooms.

- 4-angle drying positions
- Wrap-around cord design
- Built-in power outlets for daisy chain
- Lightweight, durable and stackable
- Low amperage draw with high airflow
- Compact design for tight spaces
- Quickly dry floors, kitchen cabinets, bathrooms, & more



SPECS	VOLT / CYCLE	POWER	AMPS	AIRFLOW
P-130A	115V / 60Hz	1/5 HP	2 A	800 CFM



## P-230AT MINI AIR MOVER

The top-selling XPOWER P-230AT Mini Air Movers epitomizes portability, power and versatility. Perfect for tight spaces, they do the job quickly and effectively. Along with being DIY workhorses, the 3-Hour Timer comes standard with the P-230AT, making it worry free solution to drying any occupied space.

- 4-angle drying positions
- Wrap-around cord design
- Built-in power outlets for daisy chain
- Lightweight, durable and stackable
- Low amperage draw with high airflow
- Compact design for tight spaces
- 3-Hour Timer
- Quickly dry floors, kitchen cabinets, bathrooms, & more



MODEL#	VOLT / CYCLE	POWER	AMPS	AIRFLOW
P-230AT	115V / 60Hz	1/4 HP	2.3 A	925 CFM

## 400 Series AIR MOVER

The XPOWER 400 Series Air Movers are available in a lightweight Polypropylene (PP) or a rugged ABS Plastic housing. Professionals will also appreciate the on-board daisy chain power outlet feature available on the X-400A (Not Shown – ABS Housing). They are precision manufactured using state-of-the art technology to guarantee superior performance.

Commonly seen used in drying applications:

- Carpets / Area Rugs
- Hardwood Floors / Ceramic Tiles
- Basements / Cellars
- Ceilings / Walls
- Furniture Restoration



SPECS	VOLT / CYCLE	POWER	AMPS	AIRFLOW
P-400 / X-400A	115V / 60Hz	1/4 HP	3 A	1600 CFM





## P-630 AIR MOVER

The XPOWER P-630 is amongst the most recognized 1/2 HP air mover in the JanSan and hospitality industry. Already the most lightweight and mobile air mover in its class, you can expect superior performance and shortened dry times in your cleaning application. The P-630 offers 4-angle drying positions in drying carpets, floors, walls and large areas quickly and efficiently. Every stackable unit is manufactured with optimum performance and years of service in mind.



SPECS	VOLT / CYCLE	POWER	AMPS	AIRFLOW
P-630	115V / 60Hz	1/2 HP	5 A	2980 CFM

## P-630HC AIR MOVER WITH TELESCOPING HANDLE/WHEEL KIT & CARPET CLAMP

ADDING A TELESCOPING HANDLE/WHEEL KIT & CARPET CLAMP to an already Superior 1/2 HP lightweight air mover makes the P-630HC a HOMERUN! This piece of equipment will make transporting from storage to cleaning site a breeze!

Commonly seen used in drying applications:

- Carpets / Area Rugs
- Hardwood Floors / Ceramic Tiles
- Basements / Cellars
- Furniture Restoration



SPECS	VOLT / CYCLE	POWER	AMPS	AIRFLOW
P-630HC	115V / 60Hz	1/2 HP	5 A	2980 CFM





## 800 Series AIR MOVER

The XPOWER 800 Series Air Movers are the most powerful, lightweight, and compact air movers in its class. Available in 2 different models, each features an optional 3/4 HP or 1 HP motor that will complete any size drying job quickly and efficiently. Each air mover is designed with 4-different operating positions (0°, 20° kickstand, 45°, & 90°) ideal for ventilating and drying carpets, floors, walls, and ceilings. For simplified transportability, the XPOWER 800 Series Air Movers can be sourced with a telescoping handle wheel kit and operates in 3-different positions (0°, 20° kickstand, & 90°).

- The 3/4 HP XPOWER P-800 Air Mover draws 7.5 Amps and produces 3200 CFM.
- The 1 HP XPOWER P-830 Air Mover Draws 8.5 Amps and produces 3600 CFM.

Commonly seen used in drying applications:

- Carpets / Area Rugs
- Hardwood Floors / Ceramic Tiles
- Loading Dock / Warehouse Space
- Exhibition Halls / Gymnasiums
- Auditoriums / Stadiums



MODEL#	POWER	AMPS	AIRFLOW	HANDLE
P-800	3/4 HP	7.5 A	3200 CFM	
P-800H	3/4 HP	7.5 A	3200 CFM	✓
P-830	1 HP	8.5 A	3600 CFM	
P-830H	1 HP	8.5 A	3600 CFM	✓
X-830	1 HP	8.5 A	3600 CFM	
X-830H	1 HP	8.5 A	3600 CFM	✓





# P-260NT/P-450NT SCENTED AIR MOVER

XPOWER's innovative **Freshen Aire Scented Air Movers** are portable alternatives to HVAC nebulizers, and feature patented refillable scent diffusing cartridges that quickly and efficiently fragrance the air. They perform as reliably as standard XPOWER air movers and are available from 1/8 to 1 HP, with daisy chain option or air purifying ionizer.

Freshen Aire Scented Air Movers are versatile and feature-packed:

- Powerful and energy efficient
- Lightweight and quiet
- Dual purpose use, with or without fragrance
- Variety of cartridge fragrances readily available
- P260AT and P-450AT available with daisy chain



Ionizer Switch



3 Hour  
Timer

4 Speed

SPECS	VOLT / CYCLE	POWER	AMPS	AIRFLOW
P-260NT	115V / 60Hz	1/4 HP	2.3 A	800 CFM
P-450NT	115V / 60Hz	1/3 HP	3.8 A	2000 CFM





Drying



Cooling



Air Neutralizer



Air Freshener



### PATENTED CARTRIDGE

Patented scented cartridge with XPOWER specially formulated beads to refresh any space in seconds.



### AIR QUALITY

Ionizer models available to help alleviate odors and allergens.

#### Fragrances Available:



Fresh Breeze



Key Lime



Citrus Bliss



Lavender  
Vanilla





# PL-700A / XL-730A

## LOW PROFILE AIR MOVERS

The XPOWER 700 Series is a compact 3-speed 1050-1150 CFM low profile air mover. Designed and constructed from durable polypropylene, this 1/3 HP motor draws 2.8 amps and can be daisy chained utilizing the 2 built-in power outlets. A large intake and strategically placed vents on the underside will generate the airflow needed to effectively dry floors. This air mover can be stacked upwards to 6 units with its deep nested design.

Commonly seen used in drying applications:

- Water Damage Restoration
- Carpets / Area Rugs
- Hardwood Floors / Ceramic Tiles
- Basements / Cellars
- Public Restrooms / Pool Houses
- Kitchens / Food Preparation Stations
- Walkways / Mudrooms

SPECS	VOLT / CYCLE	POWER	AMPS	AIRFLOW
PL-700A	115V / 60Hz	1/3 HP	2.8 A	1050 CFM
XL-730A	115V / 60Hz	1/3 HP	2.8 A	1150 CFM

# FD-650DC

## 24" Brushless Drum Fan STEEL HOUSING

XPOWER's new FD-650DC Drum Fan is a perfect candidate for your ventilation needs in warehouse, barn, garage, or work-shop settings. The FD-650DC features a 1/2 HP brushless DC motor rated at 9,500 CFM while only drawing a maximum 1.8 Amps. A variable speed control allows you to set the airflow necessary for your application. A durable rack equipped with easy to roll wheels maximize portability while offering a wide range of operating positions. The FD-650DC is ready for your ventilating needs no matter how large or small the task.

Commonly seen used in drying applications:

- Farming / Livestock
- Manufacturing / Packaging
- Woodworking / Construction
- Gymnasiums / Arenas
- Warehouse / Logistics
- Cooling / Ventilation



SPECS	VOLT / CYCLE	POWER	AMPS	AIRFLOW
FD-650DC	115V / 60Hz	1/2 HP	1.8 A	9500 CFM





# X-35AR

## Axial Fan 14" – HEAT RESISTANT ABS PLASTIC

The X-35AR features the same performance and operational benefits that the X-34AR offers including: 1720 CFM Variable Speed, directional airflow design, fully adjustable 360° stand, sealed motor, 1.6 Amps draw, daisy chain power outlets, BUT WITH THE ABILITY TO OPERATE IN HIGH HEAT SETTINGS UPWARDS TO 180°F. The X-35AR is a FAN FAVORITE amongst Pest Control Professionals who require a specialized movement of heated air to eradicate bed bugs.



SPECS	VOLT / CYCLE	POWER	AMPS	AIRFLOW
X-35AR	115V / 60Hz	1/4 HP	1.6 A	1720 CFM

# X-48ATR

## Axial Fan 18" – HEAT RESISTANT ABS PLASTIC

The XPOWER X-48ATR heat resistant axial fan can withstand room temperatures upwards to 180°F and can be used in conjunction with radial and propane heaters to circulate heated air. The X-48ATR features a variable speed control, low 2.8 Amp draw, 3 hour timer, 360-degree rotation rack/stand, and built in daisy chainable power outlets. Added features include a sealed motor, a lightweight stackable design, and 3600 CFM of directional airflow ideal in pest control that requires the circulating of heated air.

- Commonly seen used in drying applications:
- Water Damage Restoration
  - Pest Control / High Temperature Air Movement
  - Carpets / Area Rugs
  - Hardwood Floors / Ceramic Tiles
  - Kitchens / Food Preparation Stations
  - Manufacturing / Packaging



SPECS	VOLT / CYCLE	POWER	AMPS	AIRFLOW
X-48ATR	115V / 60Hz	1/3 HP	2.8 A	3600 CFM





## P-21AR

### Mini Axial Fan 11" – POLYPROPYLENE PLASTIC

The P-21AR offers the capability and versatility of drying spaces that have limited accessibility. The barrel-like housing with advanced air fin technology mounted on a 360° tilt adjustable stand provides a steady 1100 CFM of directional airflow to efficiently target those areas affected by damaging moisture. This lightweight, stackable 4-speed micro mini axial draws a mere 0.6 amps and can be daisy chained to multiple units with the integrated power outlets.

SPECS	VOLT / CYCLE	POWER	AMPS	AIRFLOW
P-21AR	115V / 60Hz	69 W	.6 A	1100 CFM

## P-26AR

### Mini Axial Fan 13" – POLYPROPYLENE PLASTIC

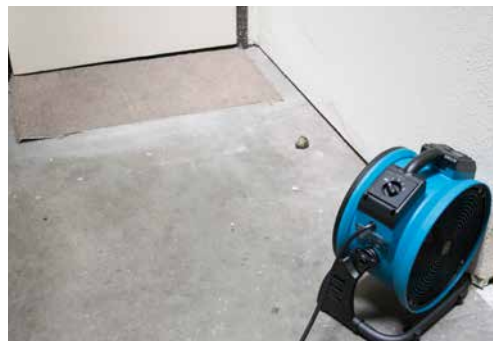
The P-26AR is a lightweight 4-speed micro mini axial that will help you battle small and large drying jobs. This 1.0 amp fan has an amazing 1300 CFM output and can be daisy chained with the integrated power outlets. The barrel-like housing with advanced air fin technology mounted on a 360° tilt adjustable stand will help you quietly target those problematic wet spots.

Commonly seen used in drying applications:

- Water Damage Restoration
- Carpets / Area Rugs
- Hardwood Floors / Ceramic Tiles
- Basements / Cellars
- Public Restrooms / Pool Houses
- Kitchens / Food Preparation Stations
- Walkways / Mudrooms



SPECS	VOLT / CYCLE	POWER	AMPS	AIRFLOW
P-26AR	115V / 60Hz	115 W	1 A	1300 CFM





# X-39AR

## Axial Fan 14" – ABS PLASTIC

This 2100 CFM Variable Speed mini axial fan features a directional airflow design with fully adjustable 360° stand to help optimize ceiling, floor, and wall drying applications. Equipped with a sealed motor that draws only 1.6 Amps. BSC/JanSan technicians can safely daisy chain up to 5 units on a single circuit with the built-in power outlets. The lightweight compact design makes transporting this stackable axial fan stress-free.

SPECS	VOLT / CYCLE	POWER	AMPS	AIRFLOW
X-39AR	115V / 60Hz	1/4 HP	1.6 A	2100 CFM

# X-47ATR

## Axial Fan 18" – ABS PLASTIC

X-47ATR The X-47ATR is easily the most compact and versatile axial fan on the market today. Weighing less than 23 Lbs., this 3600 CFM beast draws 2.8 amps and can be safely daisy chained with the 2 on-board power outlets. Every unit comes fully assembled with a removable 360° tilt adjustable stand. A high torque sealed motor paired with an advanced air fin technology ensures continuous directional airflow upwards to 60 feet

Commonly seen used in drying applications:

- Water Damage Restoration
- Carpets / Area Rugs
- Hardwood Floors / Ceramic Tiles
- Basements / Cellars
- Public Restrooms / Pool Houses



SPECS	VOLT / CYCLE	POWER	AMPS	AIRFLOW
X-47ATR	115V / 60Hz	1/3 HP	2.8 A	3600 CFM





## X-2480A MINI HEPA AIR SCRUBBER

The lightweight XPOWER X-2480A Mini HEPA Air Scrubber / Negative Air Machine is a high performance air purifier in a compact design. This 550 CFM 3-Stage Air Scrubber draws 2.8 amps and includes a foam cover for the intake to prevent contamination. The lightweight stackable ABS housing includes 2 on-board power outlets for daisy chain capability and an indicator light that illuminates when filters require attention.

### X-2480A Air Scrubber Filters



**NFS13**  
Nylon Mesh  
Filter



**PF13**  
Pleated  
Media Filter



**HEPA35-33**  
HEPA 1.4" Thick  
Filter

## X-2580 MINI HEPA AIR SCRUBBER WITH CHARCOAL

XPOWER X-2580 commercial grade air scrubber features a 1/2 HP motor which generates up to 550 CFM. This unit's FOUR STAGES OF FILTRATION include a carbon filter for effective odor control. The two outermost nylon mesh filters can easily be removed and hand washed. The 3rd stage activated carbon filter effectively absorbs and neutralizes a wide range of odors while the final stage HEPA filter removes 99.97% of 0.3-micron sized particulates including bacteria, allergens, and sub-micron sized dust.



Commonly seen used in air quality improvement applications:

- Mold Abatement / Water Damage Restoration
- Fire Damage Restoration
- Carpet Cleaning / Area Rug Cleaning
- Construction / Wood Working
- Healthcare Settings / Educational Institutions
- Manufacturing / Packaging

### X-2580 Compact HEPA Air Scrubber Filters



**NFR9**  
Nylon Mesh  
Filter



**NFS13**  
Nylon Mesh  
Filter

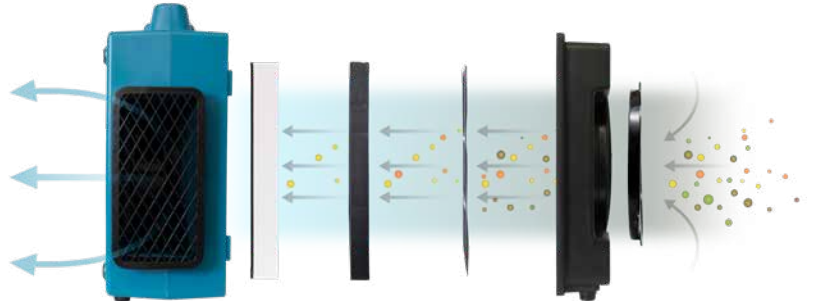


**CF15**  
Activated  
Carbon Filter



**HEPA35-33**  
HEPA 1.4" Thick  
Filter

SPECS	VOLT / CYCLE	POWER	AMPS	AIRFLOW
X-2480A	115V / 60Hz	1/2 HP	2.8 A	550 CFM
X-2580	115V / 60Hz	1/2 HP	2.8 A	550 CFM







## X-3400A HEPA AIR SCRUBBER – VARIABLE SPEED WITH GFCI

The lightweight variable speed XPOWER X-3400A HEPA Air Scrubber / Negative Air Machine is a high performance air purifier in a compact design. This 600 CFM 3-Stage Air Scrubber draws 2.8 amps and includes a foam cover for the intake to prevent contamination. The lightweight stackable ABS housing includes 2 on-board GFCI power outlets for daisy chain capability and an indicator light that illuminates when filters require attention.

### HEPA X-3400A Air Scrubber Filters



**NFS16**  
Nylon Mesh Filter



**PF16**  
Pleated Media Filter



**HEPA50**  
HEPA 2" Thick Filter

## X-3580 HEPA AIR SCRUBBER WITH CHARCOAL

XPOWER X-3580 commercial grade air scrubber features a 5-Speed 1/2 HP motor which generates up to 600 CFM. This unit's FOUR STAGES OF FILTRATION include a carbon filter for effective odor control. The two outermost nylon mesh filters can easily be removed and hand washed. The 3rd stage activated carbon filter effectively absorbs and neutralizes a wide range of odors while the final stage HEPA filter removes 99.97% of 0.3-micron sized particulates including bacteria, allergens, and sub-micron sized dust.

Commonly seen used in air quality improvement applications:

- Mold Abatement / Water Damage Restoration
- Fire Damage Restoration
- Carpet Cleaning / Area Rug Cleaning
- Construction / Wood Working
- Healthcare Settings / Educational Institutions
- Manufacturing / Packaging



### HEPA X-3580 Air Scrubber Filters



**NFR12**  
Nylon Mesh Filter



**NFS16**  
Nylon Mesh Filter



**CF35**  
Activated Carbon Filter



**HEPA35**  
HEPA 2" Thick Filter

SPECS	VOLT / CYCLE	POWER	AMPS	AIRFLOW
X-3400A	115V / 60Hz	1/2 HP	2.8 A	600 CFM
X-3580	115V / 60Hz	1/2 HP	2.8 A	600 CFM





# X-4700A HEPA AIR SCRUBBER

The XPOWER X-4700A is your NEW 750 CFM HEPA Air Scrubber / Negative Air Machine for mold abatement and the remediation of other airborne pollutants. This unit comes ready to use out of the box with 3 stages of filtration, including the 3rd stage HEPA Media Filter that is capable of capturing particulates as small as .3 microns with a 99.97% filtration efficiency rating. The X-4700AM can be equipped with an optional Charcoal Filter for Fire, Smoke, & Odor remediation jobs as well. Bonus features that come standard include: A Variable Speed Switch, and 2 Onboard GFCI Receptacles. This compact, lightweight unit draws 4.5 Amps, weighs 33 lbs, and stacks conveniently for storage or transport. If you already have the 600 CFM XPOWER X-3400A HEPA Air Scrubber, NO EXTRA SET OF FILTERS NEEDED! The X-4700AM uses the same filters as the X-3400A. Increase your profitability and improve your efficiency with XPOWER Manufacture.

# X-4700AM HEPA AIR SCRUBBER WITH HOUR METER

The XPOWER X-4700A 3 Stage HEPA Air Scrubber is a commercial air purification system that produces a maximum 750 CFM while drawing 4.5 Amps. Designed to restore indoor air quality in a variety of applications, the variable speed X-4700A will utilize 3 stages of filtration to effectively remove airborne pollutants as small as 0.3 microns with a 99.97% efficiency rating. This unit features: an optional hour meter, a variable speed control, 2 on-board GFCI power receptacles, a foam intake cap, a lightweight durable nested stacking design.

- 3-Stage filtration system
- Built-in GFCI power outlets for daisy chain
- Low 4.5 Amp draw with 750 CFM max. airflow capacity
- Variable speed control
- Filter change light indicator
- Stackable up to 5 units high for easy storage and transportation
- An integrated hour meter monitors billable time
- ETL/CETL safety certified



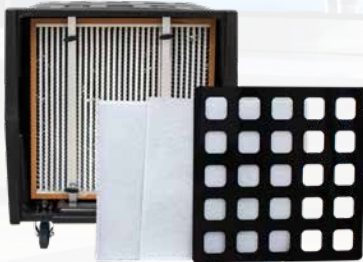
An optional Activated Carbon Filter is available in remediating smoke damage caused by fire, neutralizing pet odors, and other noxious gases.



Control Panel



12" Exhaust Collar



Filters



## AP-2000

### PORTABLE HEPA AIR FILTRATION SYSTEM

The XPOWER AP-2000 Portable HEPA Air Filtration System provides high volume air exchanges required in abatement, dust control, and air scrubbing on large job sites contaminated by airborne pollutants. While drawing ONLY 8.5 AMPS, this lightweight Portable HEPA Air Scrubber produces an incredible 2000 CFM of air movement to efficiently remediate large spaces such as: hospitals, schools, arenas, gyms, conference halls, hotels, and any other largely occupied areas.

Moving the AP-2000 is made easy as it includes a 4 caster system (assembly required). The 2 stationary and 2 swiveling casters allow for easy horizontal maneuverability through any standard doorway. The durable polyethylene roto-molded housing features 4 integrated carrying handles, a strap tie down point,

with nested stacking that secures the casters during the transport of multiple stacked units.

- 8.5 Amp Draw
- 2 Speed Switch, 1000-2000 CFM
- Vacuum Pressure Gauge
- Framed HEPA Filter With Dust Control Pre-Filter
- One-Piece Roto-Molded Polyethylene Housing With Casters
- Integrated Carrying Handles With Nested Caster Stacking
- 25 Foot Power Cord
- Easy To Service, Clean, Decontaminate
- Duct-Able 12" Exhaust Outlet
- C-ETL Certified
- 1 Year Limited Manufacturer's Warranty

SPECS	VOLT / CYCLE	POWER	AMPS	AIRFLOW
X-4700A	115V / 60Hz	2/3 HP	4.5 A	750 CFM
X-4700AM	115V / 60Hz	2/3 HP	4.5 A	750 CFM
AP-2000	115V / 60Hz	-	8.5 A	2000 CFM

# A-2 AIRROW PRO

## MULTI-USE ELECTRIC DUSTER & BLOWER

The XPOWER A-2 Airrow Pro Multi-Use Electric Duster Blower is a lightweight, compact and incredibly powerful air blower that includes easy-to-use 9 air flow nozzles for endless applications, its a must-have for home or business. Wielding over 40,000 RPM, the Airrow Pro can blast away dust powerfully and cost-effectively. It not only eliminates the expense - and potential hazard - of canned air dusters, but lends additional flexibility to pump air and dry a variety of surfaces.

The Airrow Pro is available in a variety of colors and is ideal for performing several clean-up duties:

- Dust keyboard and computer components
- Car detailing
- Household dusting
- Pet drying
- Inflating



Available: ● ● ●

### A-2 Nozzles:



Standard Nozzle



Air Blade Nozzle



Tapered Flow Nozzle



Standard Brush



Straw Adapter



Detail Brush



Air Pump Adapter Set

**DUSTING**

Blow dust, dirt and debris off any surface such as auto parts and electronic equipment

**GENERAL USE/DRYING**

Dry a variety of surfaces in tight spaces

**AIR PUMP**

Inflate air beds, pools, and toys with the applicable adapter

SPECS	VOLT / CYCLE	POWER	AMPS	AIRFLOW
A-2	120V / 60Hz	540 W	4.5 A	90 CFM





# A-5 MULTI-USE ELECTRIC DUSTER BLOWER & VACUUM



The XPOWER A-5 Multi-Purpose Electric Duster is your new partner in maximizing efficiency in various cleaning applications! Constructed with durable ABS material, the safety-certified A-5 is lightweight at under 5lbs and comes with 7 nozzle attachments, a 5 ft. flexible hose, and a reusable vacuum cleaner bag to complete various jobs that require specific types of air movement. Unleash the powerful 2 HP motor through 2 speed settings (low/high) to quickly dust around your home, service electronics, perform small-capacity vacuuming, and achieve a professional finish in automobile drying and detailing.

**DUSTING**  
Blow dust, dirt and debris off any surface such as auto parts and electronic equipment

**GENERAL USE/DRYING**  
Dry a variety of surfaces in tight spaces

- Powerful 2 HP Motor with 2 speed Settings
- 2 in 1 Blower and Vacuum Function
- Lightweight and Compact
- Durable ABS Plastic Housing Design
- 5' Air Hose with 4 Nozzle Attachments
- Washable Filters
- Convenient 5' Power Cord

A-5 Nozzles:



SPECS	VOLT / CYCLE	POWER	AMPS	AIRFLOW
A-5	115V / 60Hz	2/3 HP	4.5 A	100 CFM



## LGR DEHUMIDIFIERS

MODEL NO.	XD-125	XD-85LH
WATER REMOVAL EFFICIENCY AT AHAM (80 °F/60% RH)	76 Pint/ Day at AHAM (80°F, 60% RH)	85 Pints per day
VOLTS/HERTZ	115V / 60Hz	115 V / 60 Hz
POWER	7.3 A	6.7 A
RATED AIRFLOW	235 CFM	180 CFM
SPEEDS	1 Speed	2 Speed Control
FILTER TYPE	3M HAF Filter	Stainless Steel Filter
HOUSING	PE	PE
CORD LENGTH	25 ft.	25 Ft.
DRAIN HOSE LENGTH	20 ft.	40 Ft.
TIME METER		Up to 9999 hours 50 minutes
OPERATING RANGE	33° - 100° F (1° - 38° C)	33°F - 105°F
UNIT WEIGHT	81 lbs.	67.2 Lbs.
UNIT DIMENSIONS (LxWxH)	20" x 19" x 32"	13.1 x 29.9 x 22.2 in
PALLET QUANTITY	8	18



## MINI MIGHTY AIR MOVERS

MODEL NO.	P-80A	P-130A	P-230AT
VOLTS/HERTZ	115V / 60Hz	115V / 60Hz	115V / 60Hz
MOTOR	138 W	1/5 HP	1/4 HP
POWER	1.2 A	2 A	2.3 A
RATED AIRFLOW	600 CFM	800 CFM	925 CFM
SPEEDS	3 Speed	3 Speed	3 Speed
CORD LENGTH	10 Ft.	10 Ft.	10 Ft.
OPERATING POSITIONS	0°, 20°, 45° & 90°	0°, 20°, 45° & 90°	0°, 20°, 45° & 90°
STACKABLE	Yes	Yes	Yes
DAISY CHAIN	Yes	Yes	Yes
UNIT WEIGHT	7.9 Lbs.	9.3 Lbs.	10.2 Lbs.
UNIT DIMENSIONS (LxWxH)	10.7 x 12.4 x 13.3 in	10.7 x 12.4 x 13.3 in	10.7 x 12.4 x 13.3 in
HOUSING	PP	PP	PP
DUAL THERMAL PROTECTION	Yes	Yes	Yes
PALLET QUANTITY	72	72	72


**400 Series**

**600 Series**

**800 Series**

## CENTRIFUGAL AIR MOVERS

MODEL NO.	P-400	X-400A	P-630	P-630HC
VOLTS/HERTZ	115V / 60Hz	115V / 60Hz	115V / 60Hz	115V / 60Hz
MOTOR	1/4 HP	1/4 HP	1/2 HP	1/2 HP
POWER	3.0 A	3.0 A	5 A	5 A
RATED AIRFLOW	1600 CFM	1600 CFM	2980 CFM	2980 CFM
SPEEDS	3 Speed	3 Speed	3 Speed	3 Speed
CORD LENGTH	20 ft.	20 ft.	20 ft.	20 ft.
OPERATING POSITIONS	0°, 20°, 45° & 90°	0°, 20°, 45° & 90°	0°, 20°, 45° & 90°	0°, 20°, 45°, 90°
STACKABLE	Yes	Yes	Yes	Yes
DAISY CHAIN	No	Yes	No	Yes (GFCI)
CARPET CLAMP	No	No	No	Yes
HANDLE W/ WHEELS	No	No	No	Yes
UNIT WEIGHT	15 Lbs.	17.2 Lbs.	18.7 Lbs.	21.9 Lbs.
UNIT DIMENSIONS (LxWxH)	13.9 x 14.8 x 14.6 in	13.9 x 14.8 x 14.6 in	15.9 x 15.7 x 16.3 in	16.9 x 15.7 x 16.5 in.
HOUSING	PP	ABS	PP	ABS
DUAL THERMAL PROTECTION	Yes	Yes	Yes	Yes
PALLET QUANTITY	45	45	45	36

## 800 SERIES AIR MOVERS

MODEL NO.	P-800	P-830	X-830
VOLTS/HERTZ	115V / 60Hz	115V / 60Hz	115V / 60Hz
MOTOR	3/4 HP	1 HP	1 HP
POWER	7.5 A	8.5 A	8.5 A
RATED AIRFLOW	3200 CFM	3600 CFM	3600 CFM
SPEEDS	3 Speed	3 Speed	3 Speed
CORD LENGTH	20 ft.	20 ft.	25 ft.
OPERATING POSITIONS	0°, 20°, 45°, 90°	0°, 20°, 45°, 90°	0°, 20°, 45°, 90°
STACKABLE	Yes	Yes	Yes
FILTER KIT / CARPET CLAMP	Optional	Optional	Optional
UNIT WEIGHT	23 Lbs.	24 Lbs.	25.5 Lbs.
UNIT DIMENSIONS (LxWxH)	15.9 x 17.5 x 18.5 in.	15.9 x 17.5 x 18.5 in.	15.9 x 17.5 x 18.5 in.
HOUSING	PP	PP	ABS
DUAL THERMAL PROTECTION	Yes	Yes	Yes
PALLET QUANTITY	16	16	16

## 800 SERIES AIR MOVERS

MODEL NO.	P-800H	P-830H	X-830H
VOLTS/HERTZ	115V / 60Hz	115V / 60Hz	115V / 60Hz
MOTOR	3/4 HP	1 HP	1 HP
POWER	7.5 A	8.5 A	8.5 A
RATED AIRFLOW	3200 CFM	3600 CFM	3600 CFM
SPEEDS	3 Speed	3 Speed	3 Speed
CORD LENGTH	20 ft.	20 ft.	25 ft.
OPERATING POSITIONS	0°, 20°, 90°	0°, 20°, 90°	0°, 20°, 90°
STACKABLE	Yes	Yes	Yes
FILTER KIT/ CARPET CLAMP	Optional	Optional	Optional
HANDLE W/ WHEELS	Yes	Yes	Yes
UNIT WEIGHT	26 Lbs.	27 Lbs.	28.5 Lbs.
UNIT DIMENSIONS (LxWxH)	15.9 x 18.7 x 18.7 in.	15.9 x 18.7 x 18.7 in.	15.9 x 18.7 x 18.7 in.
HOUSING	PP	PP	ABS
DUAL THERMAL PROTECTION	Yes	Yes	Yes
PALLET QUANTITY	16	16	16

## SCENTED AIR MOVERS

P-260NT	P-450NT
115V / 60Hz	115V / 60Hz
1/5 HP	1/3 HP
2.3 A	3.8 A
800 CFM	2000 CFM
4 Speed	3 Speed
10 Ft.	20 Ft.
0°, 20°, 45°, 90°	0°, 20°, 45°, 90°
Yes	Yes
Yes	Yes
10 Lbs.	16.3 Lbs.
10.7 x 12.4 x 13.3 in.	13.9 x 14.8 x 14.6 in
PP	PP
72	45



## LOW PROFILE AIR MOVERS

MODEL NO.	PL-700A	XL-730A
VOLTS/HERTZ	115V / 60Hz	115V / 60Hz
MOTOR	1/3 HP	1/3 HP
POWER	2.8 A	2.8 A
RATED AIRFLOW	1050 CFM	1150 CFM
SPEEDS	3 Speed	5 Speed
CORD LENGTH	15 ft.	15 ft.
OPERATING POSITIONS	2 Positions	2 Positions
STACKABLE	Yes	Yes
DAISY CHAIN	Yes	Yes (GFCI)
UNIT WEIGHT	19.8 Lbs.	22.9 Lbs.
UNIT DIMENSIONS (LxWxH)	17.7 x 17.7 x 8.3 in	17.7 x 17.7 x 8.3 in
HOUSING	PP	ABS
DUAL THERMAL PROTECTION	Yes	Yes
PALLET QUANTITY	54	54





## PROFESSIONAL AXIAL FANS

MODEL NO.	P-21AR	P-26AR	X-39AR	X-47ATR
VOLTS/HERTZ	115V / 60Hz	115V / 60Hz	115V / 60Hz	115V / 60Hz
MOTOR	69 W	115 W	1/4 HP	1/3 HP
POWER	.6 A	1 A	1.6 A	2.8
RATED AIRFLOW	1100 CFM	1300 CFM	2100 CFM	3600
SPEEDS	4 Speed	4 Speed	Variable	Variable
CORD LENGTH	10 ft.	10 ft.	20 ft.	20 ft.
OPERATING POSITIONS	360° Rotation (Rack Included)	360° Rotation (Rack Included)	360° Rotation (Rack Included)	360° Rotation (Rack Included)
STACKABLE	Yes	Yes	Yes	Yes
3 HOUR TIMER	No	No	No	Yes
DAISY CHAIN	Yes	Yes	Yes	Yes
UNIT WEIGHT	10.4 Lbs.	11.7 Lbs.	16.7 Lbs.	22.2 Lbs.
UNIT DIMENSIONS (LxWxH)	16.1 x 4.2 x 8.9 in.	17.3 x 15.4 x 8.9 in.	18.6 x 9.4 x 19.2 in	21.9 x 9.8 x 22.5 in.
HOUSING	ABS	ABS	ABS	ABS
DUAL THERMAL PROTECTION	Yes	Yes	Yes	Yes
PALLET QUANTITY	72	48	42	28

MODEL NO.	X-35AR	X-48ATR	FD-650DC
VOLTS/HERTZ	115V / 60Hz	115V / 60Hz	115V / 60Hz
MOTOR	1/4 HP	1/3 HP	1/2 HP
POWER	1.6 A	2.8 A	1.8 A
RATED AIRFLOW	1720 CFM	3600 CFM	9500 CFM
SPEEDS	Variable	Variable	Variable
CORD LENGTH	20 ft.	20 ft.	10 ft.
OPERATING POSITIONS	360° Rotation (Rack Included)	360° Rotation (Rack Included)	200° Rotation (Rack Included)
STACKABLE	Yes	Yes	Yes
3 HOUR TIMER	-	Yes	No
DAISY CHAIN	Yes	Yes	Yes
UNIT WEIGHT	17.6 Lbs.	25.6 Lbs.	29.3 Lbs.
UNIT DIMENSIONS (LxWxH)	18.6 x 9.4 x 19.2 in.	21.9 x 9.8 x 22.5 in.	30.1 x 9.3 x 29.3 in
HOUSING	ABS+PC	ABS+PC	ABS
DUAL THERMAL PROTECTION	Yes	Yes	Yes
PALLET QUANTITY	42	28	8

## MULTI PURPOSE BLOWER

MODEL NO.	A-2
VOLTS/HERTZ	120V / 60Hz
MOTOR	540 W
POWER	4.5 A
RATED AIRFLOW	90 CFM
SPEEDS	2 Speed
CORD LENGTH	10 Ft.
UNIT WEIGHT	2.3 Lbs.
UNIT DIMENSIONS (LxWxH)	6.75 x 3.82 x 22 in.
HOUSING	ABS
PALLET QUANTITY	432

## MULTI PURPOSE BLOWER+ VACUUM

MODEL NO.	A-5
VOLTS/HERTZ	115V / 60Hz
MOTOR	2 HP
POWER	8 A
RATED AIRFLOW	100 CFM
SPEEDS	2 Speed
CORD LENGTH	10 Ft.
UNIT WEIGHT	4.8 Lbs.
UNIT DIMENSIONS (LxWxH)	10.3 x 5.2 x 8 in.
HOUSING	ABS
PALLET QUANTITY	105

## AIR SCRUBBERS

MODEL NO.	X-2480A	X-2580	X-3400A	X-3580
VOLTS/HERTZ	115V / 60Hz	115V / 60Hz	115V / 60Hz	115V / 60Hz
MOTOR	1/2 HP	1/2 HP	1/2 HP	1/2 HP
MAX AMP	2.8 A	2.8 A	2.8 A	2.8 A
RATED AIRFLOW	550 CFM	550 CFM	600 CFM	600 CFM
SPEEDS	5 Speed	5 Speed	Variable	5 Speed
CORD LENGTH	13 ft.	13 ft.	13 ft.	13 ft.
DAISY CHAIN	Yes - Plug 2 unit together	Yes	Yes (GFCI)	Yes
STACKABLE	Yes	Yes	Yes	Yes
UNIT WEIGHT	23.6 Lbs.	23.6 Lbs.	28.8 Lbs.	32.8 Lbs.
UNIT DIMENSIONS (LxWxH)	16.6 x 10.4 x 18.9 in.	16.6 x 10.4 x 18.9 in.	19.6 x 12.3 x 21.6 in.	19.6 x 12.3 x 21.6 in.
HOUSING	ABS	ABS	ABS	ABS
DUCT SIZE (AIR OUTLET DIMENSIONS)	No	No	5" x 10.8"	5" x 10.8"
DUAL THERMAL PROTECTION	Yes	Yes	Yes	Yes
PALLET QUANTITY	32	32	18	18

## 3 - 4 STAGE FILTERS

1ST STAGE FILTER	NFS13 - (13 x 13 in.) Washable Nylon Mesh Filter	NFR9 - (9 in.) Washable Outer Nylon Mesh Filter	NFS16 - (16 x 16 in.) Washable Nylon Mesh Filter	NFR12 - (12 in.) Washable Outer Nylon Mesh Filter
2ND STAGE FILTER	PF13 - (13 x 13 in.) Pleated Media Filter	NFS13 - (13 x 13 in.) Washable Nylon Mesh Filter	PF13 - (16 x 16 in.) Pleated Media Filter	NFS16 - (16 x 16 in.) Washable Nylon Mesh Filter
3RD STAGE FILTER	HEPA35-33 - (13 x 13 in.) 1.4" Thick HEPA Filter	CF15 - (13 x 13 in.) Activated Carbon Filter	HEPA50 - 2" Thick HEPA Filter (16 x 16 in.)	CF35 - (16 x 16 in.) Activated Carbon Filter
4TH STAGE FILTER	No	HEPA35-33 - (13 x 13 in.) 1.4" Thick HEPA Filter	No	HEPA50 - (16 x 16 in.) 2" Thick HEPA Filter
FILTER CHANGE LIGHT	Indicates when filter needs to be cleaned or changed			

## AIR SCRUBBERS

MODEL NO.	X-4700A	X-4700AM	AP-2000
VOLTS/HERTZ	115V / 60Hz	115V / 60Hz	115V / 60Hz
MOTOR	2/3 HP	1/2 HP	-
MAX AMP	4.5 A	2.8 A	8.5 A
MAX. RATED AIRFLOW	750 CFM	750 CFM	2000 CFM
SPEEDS	Variable	Variable	2 Speed
CORD LENGTH	13 ft.	13 ft.	25 Ft.
DAISY CHAIN	Yes (GFCI)	Yes	No
HOUR METER	No	Yes	No
STACKABLE	Yes	Yes	Yes
UNIT WEIGHT	33.1 Lbs.	32.8 Lbs.	112.4 Lbs.
UNIT DIMENSIONS (LxWxH)	19.6 x 12.3 x 21.3 in.	19.6 x 12.3 x 21.3 in.	40.2 x 29 x 32.3 in.
HOUSING	ABS	ABS	PE
DUCT SIZE (AIR OUTLET DIMENSIONS)	5" x 10.8"	5" x 10.8"	12
DUAL THERMAL PROTECTION	Yes	Yes	Yes
PALLET QUANTITY	18	18	2

### 3 STAGE FILTERS

1ST STAGE FILTER	NFS16 - (16 x 16 in.) Washable Nylon Mesh Filter	NFR12 - (12 in.) Washable Outer Nylon Mesh Filter	Dust Filter
2ND STAGE FILTER	PF13 - (16 x 16 in.) Pleated Media Filter	NFS16 - (16 x 16 in.) Washable Nylon Mesh Filter	Dust Filter
3RD STAGE FILTER	HEPA50 - 2" Thick HEPA Filter (16 x 16 in.)	HEPA50 - (16 x 16 in.) 2" Thick HEPA Filter	HEPA Filter

FILTER CHANGE LIGHT

Indicates when filter needs to be cleaned or changed





## CONTACT



668 South 6th Avenue  
City of Industry, CA 91746



[info@xpower.com](mailto:info@xpower.com)



1.855.855.8868



[www.xpower.com](http://www.xpower.com)

