

# W P

WESTERN PLASTICS

## GUIDE TO PACKAGING

**GREENER!**

## PROFITS



**EZ Bander Pg. 3**



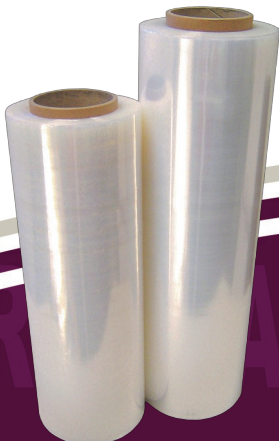
**Interfolded Pop-up Sheets Pg. 17**



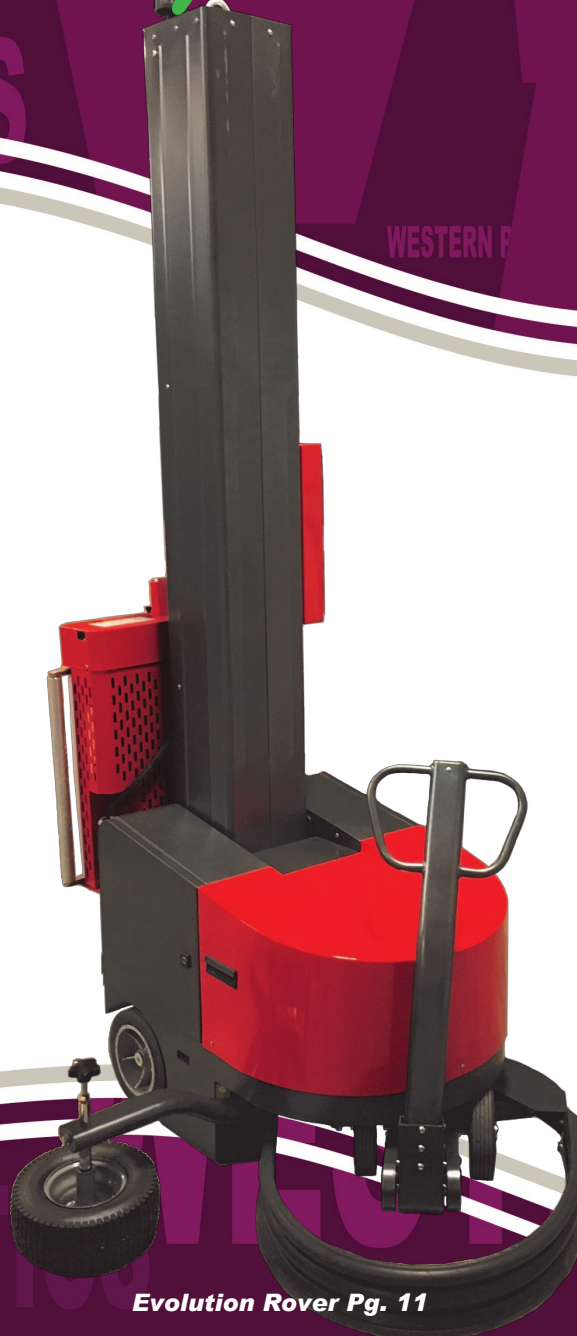
**Evolution Wrapper Pg.10**



**Foil Containers and Lids Pg. 19**



**Pallet-tite Pg. 5**



**Evolution Rover Pg. 11**



**Cutterbox Films Pg.15**

# TABLE OF CONTENTS

# WWP<sup>®</sup>

## WESTERN PLASTICS



### Industrial Packaging

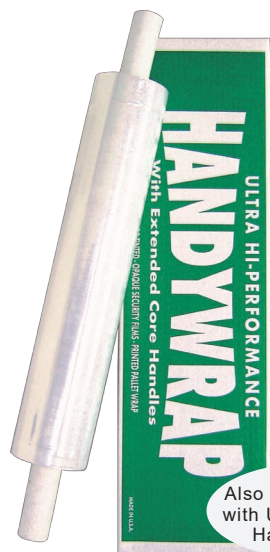
<input type="checkbox"/> Handywrap Pallet Stretch Wrap on Extended Cores	3
<input type="checkbox"/> EZ Bander® Ultra Cling Cast Stretch Film - Narrow Width	3
<input type="checkbox"/> Logo Film Custom Printed Stretch Wrap	4
<input type="checkbox"/> Dispensers & Handles 3" Core Banding Film	4
<input type="checkbox"/> Tape Dispensers	4
<input type="checkbox"/> Eco-Max® Micron Pallet Wrap	4
<input type="checkbox"/> Pallet-Tite Stretch Wrap & Machine Grade Film	5
<input type="checkbox"/> Perform XL™ Hi-Performance Machine Film	5
<input type="checkbox"/> Identi Film Color Tinted Pallet Wrap	6
<input type="checkbox"/> Securi Wrap True Opaque Stretch Film	6
<input type="checkbox"/> WrapNet Soft Knitted Pallet Wrap	7
<input type="checkbox"/> Air-Flow™ Vented Stretch Wrap	7
<input type="checkbox"/> LitewrapperXT Source Reduction Wrap and Dispenser	7
<input type="checkbox"/> Cover-All "Pallet Cover" Top Sheeting Film	8
<input type="checkbox"/> AutoBander Narrow Width Machine Rolls	8
<input type="checkbox"/> PVC Printers Wrap Cling and Shrink Films	8
<input type="checkbox"/> XP Film Hi-Performance Engineered Pallet Wrap	9
<input type="checkbox"/> Evolution Entry Level Wrapper	11
<input type="checkbox"/> Laundry Wrap All Purpose PVC Overwrap	12
<input type="checkbox"/> Bander Carton Sealing Tape	12
<input type="checkbox"/> Stretch-It DSF Static Dissipative Film	12
<input type="checkbox"/> Weather All UVI Hand and Machine Film	12
<input type="checkbox"/> HYBRID80® Plus Engineered Pallet Wrap	13
<input type="checkbox"/> HYBRID80® Stiff Formula Micron Pallet Wrap	13

### Foodservice Packaging

<input type="checkbox"/> Perforated All Purpose Cling Sheets Perforated to Tear	14
<input type="checkbox"/> Wrapmaster Safety Film Dispenser	14
<input type="checkbox"/> Foilmaster Safety Foil Dispenser	14
<input type="checkbox"/> Premium Cutterbox Film	15
<input type="checkbox"/> Premium Cutterbox Foil	15
<input type="checkbox"/> Prestige Film, Foil and Containers	15
<input type="checkbox"/> Cutterbox Slide Cutter	16
<input type="checkbox"/> Produce Film All Purpose Wrap	16
<input type="checkbox"/> Shrink Films Perforated to Tear	16
<input type="checkbox"/> Perforated Dispenser	16
<input type="checkbox"/> El Dorado Economy Aluminum Foil Rolls	17
<input type="checkbox"/> Interfolded Foil Sheets Pop-Up Aluminum Foil Sheets	17
<input type="checkbox"/> Cater Trays	17
<input type="checkbox"/> Mill Roll Film All Purpose Foodservice Wrap	17
<input type="checkbox"/> All Purpose Meat Film - Machine and Handwrap	18
<input type="checkbox"/> Foil Containers - Rounds Aluminum Rounds and Lids	19
<input type="checkbox"/> Foil Containers - Steam Table Foil Containers and Trays	19

For more fax this page to (800) 979-7277

Name: _____
Company: _____
Phone: _____
E-Mail Address: _____



## HandyWrap

### Pallet Stretch Wrap on Disposable Extended Core Handles

ITEM NO	WIDTH	GAUGE	LENGTH	RLS/CS	CS/PLT	CUBIC FT	WEIGHT	PRICE
DSW01	10"	80	1000'	4	50	0.70	12.80	
DSW22	15"	80	1000'	4	50	1.05	19.20	
DSW08	20"	60	1000'	4	50	1.05	19.20	
DSW03	20"	70	1000'	4	50	1.05	22.40	
DSW04	20"	80	1000'	4	50	1.05	25.60	
DSW04-ULTRA	20"	80	1000'	4	50	1.05	25.60	
DSW11	20"	115	700'	4	50	1.05	25.76	
DSW06	20"	120	700'	4	50	1.05	26.88	
DSW25	20"	150	600'	4	50	1.05	28.80	
DSW07	30"	80	1000'	4	50	1.47	38.40	

Also Available with Ultra-Grip Handles

Also available in colors

Extended Core Handwrap

## HandyWrap Stretch Banding Film on Disposable 1" Core Handle

ITEM NO	WIDTH	GAUGE	LENGTH	RLS/CS	CS/PLT	CUBIC FT	WEIGHT	PRICE
DSB02	5"	80	1000'	15	60	1.20	24.00	
DSB01	5"	115	700'	15	60	1.20	24.15	
DSB03	5"	120	700'	15	60	1.20	25.20	
DSB04	5"	135	650'	15	60	1.20	26.33	

Also available in colors

Extended Core Banding Film



## EZ Bander® Ultra Cling Cast Stretch Film (Narrow Width)

### Stretch Banding Film on 3" Core



Stretch Banding Film

1 Free Dispenser Each Case

ITEM NO	WIDTH	GAUGE	LENGTH	RLS/CS	CS/PLT	CUBIC FT	WEIGHT	PRICE
SBF26	3"	60	1000'	18	60	0.97	12.96	
SBF08	3"	80	1000'	18	60	0.97	17.28	
SBF02	3"	90	1000'	18	60	0.97	19.44	
SBF31	3"	115	700'	18	60	0.97	17.39	
SBF03	3"	120	700'	18	60	0.97	18.14	
SBF19	3"	135	650'	18	60	0.97	18.95	
SBF23	3"	150	600'	18	60	0.97	19.44	
SBF04	4"	80	1000'	12	60	0.97	15.36	
SBF54	4"	90	1000'	12	60	0.97	17.28	
SBF41	4"	115	700'	12	60	0.97	15.46	
SBF32	4"	120	700'	12	60	0.97	16.13	
SBF71	4"	150	600'	12	60	0.97	17.28	
SBF05	5"	80	1000'	12	60	0.97	19.20	
SBF07	5"	90	1000'	12	60	0.97	21.60	
SBF51	5"	115	700'	12	60	0.97	19.32	
SBF06	5"	120	700'	12	60	0.97	20.16	
SBF28	5"	135	650'	12	60	0.97	21.06	
SBF57	5"	150	600'	12	60	0.97	21.60	

ITEM NO	WIDTH	GAUGE	LENGTH	RLS/CS	CS/PLT	CUBIC FT	WEIGHT	PRICE
SBF01	2"	80	1000'	24	60	0.97	15.36	
SBF77	2"	90	1000'	24	60	0.97	17.28	
SBF10	2"	115	700'	24	60	0.97	15.46	
SBF09	2"	120	700'	24	60	0.97	16.13	

Also available in colors



Printed Pallet Wrap  
Hand and Machine Films

## Logo Film Custom Printed Pallet Stretch Wrap

ITEM NO	SIZE	GAUGE	LENGTH	RLS/CS	CS/PLT	CUBIC FT	WEIGHT	PRICE
DPW02	5"	80	1000'	12	60	1.20	19.20	
DPW03	10"	80	1000'	4	50	0.70	12.80	
DPW04	20"	80	1000'	4	50	1.05	25.60	
<b>Printed Handwrap on 3" Core</b>								
DPW05	18"	80	1500'	4	36	1.69	34.56	
DPW07	15"	80	1500'	4	48	1.43	28.80	
DPW06	20"	80	5000'	1	40	0.94	32.00	

Stock Messages Available - Fragile, Do Not Accept if Damaged, Do Not Double Stack, Do Not Break Pallet, etc.

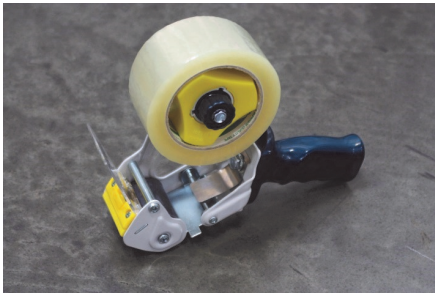
Customize Your Print - 1 Pallet Minimum

## Pallet Wrap Dispensers & Handles

ITEM NO	DESCRIPTION	PER/CS	CUBIC FT	PRICE
DP200	Coreless Film Dispenser	1		
DP201	Heavy Duty Dispenser	6	0.30	
DP202	Plastic Handle for 3" Core	100	0.23	
DP203	Holder with Adjustable Brake	6		
DP204	Handi Ring Holder (Set)	75	0.23	
DP205	Handi-Grip Holder	50		
DP206	Band-It Stand	1	14.20	
DP207	Nelson Wrap Dispenser	1		
DP212	Litewrapper Tension Dispenser	1	0.80	
DP214	Litewrapper XT	1	0.80	
DP214CL	Litewrapper XT Coreless	1	0.80	
DP218	Stretch Protectors	20	0.23	
CT301	Stretch Film Cutter	24	0.001	



Dispensers and Handles  
Fits All Brands Film



## Tape Dispensers

ITEM NO	SIZE	DESCRIPTION	PIECES/CS	PRICE
DP234	2"	Solid Steel Frame Heavy Duty T230	24	
DP235	3"	Solid Steel Frame Heavy Duty T540	20	

## Eco-Max<sup>®</sup> Stiff Formula Micron Pallet Wrap

ITEM NO	WIDTH	THICKNESS	LENGTH	RLS/CS	CS/PLT	CUBIC FT	WEIGHT	PRICE
ECO06	12"	13 Micron	2000'	4	60	1.17	19.60	
ECO04	15"	13 Micron	2000'	4	48	1.43	24.48	
ECO02	18"	13 Micron	2000'	4	48	1.69	29.36	
ECO14	18"	14.5 Micron	1500'	4	48	1.69	24.64	
ECO05	12"	16 Micron	1500'	4	60	1.17	18.14	
ECO03	15"	16 Micron	1500'	4	48	1.43	22.68	
ECOPL	16"	16 Micron	1500'	4	48	1.52	24.19	
ECO01	18"	16 Micron	1500'	4	48	1.69	27.21	
ECO23	12"	19 Micron	1500'	4	60	1.17	21.60	
ECO15	15"	19 Micron	1500'	4	48	1.43	27.00	
ECO16	18"	19 Micron	1500'	4	48	1.69	32.40	
ECO20	15"	29 Micron	1000'	4	48	1.43	27.36	
ECO21	18"	29 Micron	1000'	4	48	1.69	32.84	



Micron Palletwrap  
Super Stiff Film

**Ultra Cling Handwrap**  
Hi-Performance



Hand Palletwrap  
Super Cling-Super Strong

**Pallet-tite** Stretch Wrap for Hand Application

ITEM NO	WIDTH	GAUGE	LENGTH	RLS/CS	CS/PLT	CUBIC FT	WEIGHT	PRICE
PSF04	12"	60	2000'	4	60	1.17	23.04	
PSF05	15"	60	2000'	4	48	1.43	28.80	
PSF06	18"	60	2000'	4	48	1.69	34.56	
PSF20	12"	70	1500'	4	60	1.17	20.16	
PSF10	15"	70	1500'	4	48	1.43	25.20	
PSF11	18"	70	1500'	4	48	1.69	30.24	
PSF01	12"	80	1500'	4	60	1.17	23.04	
PSF02	15"	80	1500'	4	48	1.43	28.80	
PSF03	18"	80	1500'	4	48	1.69	34.56	
PSF16	12"	90	1500'	4	60	1.17	25.92	
PSF22	15"	90	1500'	4	48	1.43	32.40	
PSF17	18"	90	1500'	4	48	1.69	38.88	

**Machine Grade** Ultra Stretch

ITEM NO	WIDTH	GAUGE	LENGTH	RLS/CS	CS/PLT	CUBIC FT	WEIGHT	PRICE
WMF75	20"	75	5000'	1	40	0.89	30.00	
WMF80	20"	80	5000'	1	40	0.94	32.00	
WMF86	20"	80	6000'	1	40	1.04	38.40	
WMF95	20"	90	5000'	1	40	1.04	36.00	
WMF15	20"	115	4000'	1	40	0.94	36.80	
WMF13	20"	135	3350'	1	40	0.94	36.18	
WMF30	20"	150	3000'	1	40	0.94	36.00	
WMF35	30"	80	5000'	1	20	1.41	48.00	
WMF45	40"	80	5000'	1	16	1.88	64.00	
WMF58	50"	80	5000'	1	16	2.34	80.00	
WMF68	60"	80	5000'	1	16	2.81	96.00	
WMF78	70"	80	5000'	1	16	3.28	112.00	
WMF88	80"	80	5000'	1	8	3.75	128.00	

**Ultra Cling Machine Film**  
Hi-Performance



Machine Palletwrap  
Super Cling-Super Strong



**Perform XL™** Superior Stretch Machine Grade Pallet Wrap

ITEM NO	WIDTH	GAUGE	LENGTH	RLS/CS	RL/PLT	CUBIC FT	WEIGHT	PRICE
WXL45	20"	45	7000'	1	50	0.74	25.20	
WXL50	20"	50	9000'	1	40	0.94	36.00	
WXL12	20"	55	5000'	1	50	0.74	22.00	
WXL60	20"	60	7500'	1	40	0.94	36.00	
WXL16	20"	63	5000'	1	50	0.74	25.20	
WXL70	20"	70	6000'	1	40	0.89	33.60	
WXL75	20"	75	6000'	1	40	0.94	36.00	
WXL80	20"	80	5500'	1	40	0.94	35.20	
WXL90	20"	90	5000'	1	40	0.99	36.00	
WXL15	20"	115	3500'	1	40	0.94	32.20	
WXL14	20"	140	3000'	1	40	0.94	33.60	
WXL83	30"	80	5500'	1	20	1.57	52.80	

# Identi-Film

## Color Tinted Pallet Wrap

Hand and Machine Films



### Extended Core Handles-Tinted Film

ITEM NO	WIDTH	GAUGE	FT/ RL	COLOR	RLS/ CS	CS/ PLT	CUBIC FT	WEIGHT	PRICE
BSW02	20"	80	1000'	Blue	4	50	1.10	25.60	
RSW03	20"	80	1000'	Red	4	50	1.10	25.60	
GSW00	20"	80	1000	Green	4	50	1.10	25.60	
YSW05	20"	80	1000'	Yellow	4	50	1.10	25.60	
ORN20	20"	80	1000'	Orange	4	50	1.10	25.60	

### Handwrap on 3" Core-Tinted Film

ITEM NO	WIDTH	GAUGE	FT/ RL	COLOR	RLS/ CS	CS/ PLT	CUBIC FT	WEIGHT	PRICE
BLU18	18"	80	1500'	Blue	4	48	1.69	34.56	
RED18	18"	80	1500'	Red	4	48	1.69	34.56	
GRN18	18"	80	1500'	Green	4	48	1.69	34.56	
ORN18	18"	80	1500'	Orange	4	48	1.69	34.56	
YEL18	18"	80	1500'	Yellow	4	48	1.69	34.56	
PUR18	18"	80	1500'	Purple	4	48	1.69	34.56	
BLU15	15"	80	1500'	Blue	4	48	1.43	28.80	
RED15	15"	80	1500'	Red	4	48	1.43	28.80	
GRN15	15"	80	1500'	Green	4	48	1.43	28.80	
YEL15	15"	80	1500'	Yellow	4	48	1.43	28.80	

### Narrow Width-Tinted Film

ITEM NO	WIDTH	GAUGE	FT/ RL	COLOR	RLS/ CS	CS/ PLT	CUBIC FT	WEIGHT	PRICE
BLU03	3"	80	1000'	Blue	18	60	0.97	17.28	
RED03	3"	80	1000'	Red	18	60	0.97	17.28	
GRN03	3"	80	1000'	Green	18	60	0.97	17.28	
YEL03	3"	80	1000'	Yellow	18	60	0.97	17.28	
ORN03	3"	80	1000'	Orange	18	60	0.97	17.28	
BLU05	5"	80	1000'	Blue	12	60	0.97	19.20	
RED05	5"	80	1000'	Red	12	60	0.97	19.20	
GRN05	5"	80	1000'	Green	12	60	0.97	19.20	
YEL05	5"	80	1000'	Yellow	12	60	0.97	19.20	
ORN05	5"	80	1000'	Orange	12	60	0.97	19.20	

### Machine Grade-Tinted Film

ITEM NO	WIDTH	GAUGE	FT/ RL	COLOR	RLS/ CS	CS/ PLT	CUBIC FT	WEIGHT	PRICE
BLM20	20"	80	5000'	Blue	1	40	0.94	32.00	
RMG20	20"	80	5000'	Red	1	40	0.94	32.00	
GMG20	20"	80	5000'	Green	1	40	0.94	32.00	
YMG20	20"	80	5000'	Yellow	1	40	0.94	32.00	
OMG20	20"	80	5000'	Orange	1	40	0.94	32.00	
PUR20	20"	80	5000'	Purple	1	40	0.94	32.00	
BMG30	30"	80	5000'	Black	1	20	1.41	48.00	
RMG30	30"	80	5000'	Red	1	20	1.41	48.00	
BLM30	30"	80	5000'	Blue	1	20	1.41	48.00	
GMG30	30"	80	5000'	Green	1	20	1.41	48.00	



# Securi Wrap



Tamper Deterrent

### True Opaque Stretch Film Extended Core Handles-Opaque

ITEM NO	WIDTH	GAUGE	FT/RL	COLOR	RLS/CS	CS/PLT	CUBIC FT	WEIGHT	PRICE
BSW00	20"	80	1000'	Black	4	50	1.10	25.60	
WSW04	20"	80	1000'	White	4	50	1.10	25.60	

### Handwrap on 3" Core-Opaque

BLA18	18"	80	1500'	Black	4	48	1.69	34.56	
BLA15	15"	80	1500'	Black	4	48	1.43	28.80	
WHT18	18"	80	1500'	White	4	48	1.69	34.56	
WHT15	15"	80	1500'	White	4	48	1.43	28.80	
BLA115	18"	115	1000'	Black	4	48	1.69	33.12	

### Machine Grade-Opaque

ITEM NO	WIDTH	GAUGE	FT/RL	COLOR	RLS/CS	CS/PLT	CUBIC FT	WEIGHT	PRICE
BKM20	20"	80	5000'	Black	1	40	0.94	32.00	
WMG20	20"	80	5000'	White	1	40	0.94	32.00	

Pallet Wrap Netting



## WrapNet Soft Knitted Pallet Wrap

WRAP NET I - Stretch Netting with Extended Core Handles For Hand Application

ITEM NO	WIDTH	LENGTH	RLS/CS	CS/PLT	CUBIC FT	WEIGHT	PRICE
WSN03	20"	1000'	4	60	1.05	10.80	

WRAP NET II - Stretch Netting on 3" Core Handles For Hand Application

ITEM NO	WIDTH	LENGTH	RLS/PLT	CUBIC FT	WEIGHT	PRICE
WSN04	20"	3000'	84	0.60	8.10	

WRAP NET III—Stretch Netting For Machine Application

ITEM NO	WIDTH	LENGTH	RLS/PLT	CUBIC FT	WEIGHT	PRICE
WSN02	20"	10000'	32	1.16	27.00	
WSN07	20"	5000'	60	0.74	13.50	
WSN30	30"	10000'	16	1.75	40.50	

## Air-Flow™

AIR-FLOW™ I - Die Cut, Vented Pallet Wrap with Extended Core Handles For Hand Application

ITEM NO	WIDTH	LENGTH	RLS/CS	CS/PLT	CUBIC FT	WEIGHT	PRICE
WAF03	17"	1000'	4	60	1.10	16.00	

AIR-FLOW™ II - Die Cut, Vented Pallet Wrap on 3" Core Handles For Hand Application

ITEM NO	WIDTH	LENGTH	RLS/PLT	CUBIC FT	WEIGHT	PRICE
WAF04	17"	3000'	72	0.29	12.00	

AIR-FLOW™ III -Die Cut, Vented Pallet Wrap For Machine Application

ITEM NO	WIDTH	LENGTH	RLS/PLT	CUBIC FT	WEIGHT	PRICE
WAF84	17"	8400'	36	0.75	33.00	

## Premium Air-Flow™

Die Cut, Vented Pallet Wrap with 200% Stretch For Machine Application

ITEM NO	WIDTH	LENGTH	RLS/PLT	CUBIC FT	WEIGHT	PRICE
WAF18	19"	3300'	40	0.74	30.00	



Vented Palletwrap



## Litewrapper Dispenser

ITEM NO	DESCRIPTION	PIECES/CS	CUBIC FT	PRICE
DP212	Litewrapper Tension Dispenser	1	0.80	

### Refill Rolls - Cored

ITEM NO	WIDTH	LENGTH	RLS/CS	CS/PLT	CUBIC FT	PRICE
WXP55	18.25"	1500'	4	60	0.91	

## Litewrapper XT Dispenser

ITEM NO	DESCRIPTION	PIECES/CS	CUBIC FT	PRICE
DP214	Litewrapper XT Dispenser	1	0.80	
DP214CL	Litewrapper XT Coreless Dispenser	1	0.80	

### Refill Rolls - Cored

ITEM NO	WIDTH	LENGTH	RLS/CS	CS/PLT	CUBIC FT	PRICE
WXP55	18.25"	1500'	4	60	0.91	

### Refill Rolls - Coreless

ITEM NO	WIDTH	LENGTH	RLS/CS	RLS/PLT	CUBIC FT	PRICE
HCL75	18.25"	1,500'	1	189	0.30	



Source Reduction Wrap

## Cover-All "PALLET COVER" Top Sheeting Film



Pallet Covers



ITEM NO	SHEET/ SIZE	SHEETS	RLS/ CS	CS/PLT	CUBIC FT	WEIGHT	PRICE
WPC01	60" X 60"	150	1	50	0.66	30.00	
WPC02	60" X 60" BLACK	150	1	50	0.66	30.00	

## Auto Bander

### Jumbo Stretch Wrap

Narrow Width Stretch Film Bundling Equipment



Narrow Width Machine Rolls Stretch Films

ITEM NO	WIDTH	GAUGE	LENGTH	RLS/PLT	CUBIC FT	WEIGHT	PRICE
WJR01	3"	80	5000'	280	0.14	4.80	
WJR02	5"	80	5000'	160	0.23	8.00	
WJR15	10"	80	5000'	80	0.47	16.00	
WJR03	3"	120	4000'	280	0.14	5.76	
WJR04	5"	120	4000'	160	0.23	9.60	
WJR16	10"	120	4000'	80	0.47	19.20	

## PVC Printers Wrap All Purpose Over Wrap Perforated to Tear



MADE IN USA

### Cling Film

ITEM NO	SIZE	SHEETS/RL	RLS/CS	CS/PLT	CUBIC FT	WEIGHT	PRICE
PCW01	12 X 12	1000	1	189	0.15	4.90	
PCW02	15 X 15	700	1	120	0.18	5.88	
PCW03	18 X 18	600	1	120	0.22	7.15	
PCW07	20 X 20	600	1	60	0.22	8.71	
PCW04	22 X 22	500	1	60	0.25	8.77	
PCW05	24 X 24	500	1	60	0.28	10.35	
PCW06	24 X 28	500	1	60	0.28	11.99	



Perforated Wrap For Printers Package Overwrap

75ga PVC film, high cling, perforated to overwrap, requires no shrink equipment. High cling seal to keep packages closed

### Shrink Film

ITEM NO	SIZE	SHEETS/RL	RLS/CS	CS/PLT	CUBIC FT	WEIGHT	PRICE
PSW01	12 X 12	1400	1	189	0.15	6.01	
PSW02	15 X 15	1000	1	120	0.18	6.65	
PSW03	18 X 18	600	1	120	0.22	5.82	
PSW07	20 X 20	500	1	60	0.22	5.97	
PSW04	22 X 22	500	1	60	0.25	7.12	
PSW05	24 X 24	500	1	60	0.28	8.38	
PSW06	24 X 28	500	1	60	0.28	9.69	

60ga shrink film. Heat seal for an airtight package, excellent shelf life, sparkle, sheen. Will not distort fragile packaging.





Engineered Pallet Wrap

**Hi-Performance Engineered Pallet Wrap**

**Engineered Extended Core Wrap**



ITEM NO	WIDTH	LENGTH	RLS/CS	CS/PLT	CUBIC FT	WEIGHT	PRICE
WXP20	18"	1000'	4	60	0.91	14.00	
WXP21	18"	2000'	4	50	0.91	25.80	

**Engineered Machine Film**

ITEM NO	WIDTH	LENGTH	RLS/CS	RLS/PLT	CUBIC FT	WEIGHT	PRICE
WXP30	18"	5000'	1	40	0.78	14.00	
WXP31	18"	6000'	1	40	1.16	16.80	
WXP67	27.4"	6000'	1	20	1.75	25.60	

**Engineered Colors Machine Grade**

ITEM NO	WIDTH	LENGTH	COLOR	RLS/CS	CS/PLT	CUBIC FT	WEIGHT	PRICE
WXP31OR	18"	6000'	ORANGE	1	40	1.16	16.8	
WXP31RD	18"	6000'	RED	1	40	1.16	16.8	
WXP31BL	18"	6000'	BLUE	1	40	1.16	16.8	
WXP31GR	18"	6000'	GREEN	1	40	1.16	16.8	
WXP31YL	18"	6000'	YELLOW	1	40	1.16	16.8	

**Engineered Hand Wrap**

ITEM NO	WIDTH	LENGTH	RLS/CS	CS/PLT	CUBIC FT	WEIGHT	PRICE
WXP51	15"	1500'	4	48	1.43	15.00	
WXP49	18"	1500'	4	48	1.69	16.21	
WXP54	15"	1500'	BULK	196	0.40	3.40	
WXP50	15"	2000'	BULK	144	0.45	5.20	
WXP57	18"	1500'	BULK	196	0.50	4.75	
WXP48	18"	2000'	BULK	144	0.55	5.84	

**Engineered Colors Hand Wrap**

ITEM NO	WIDTH	LENGTH	COLOR	RLS/CS	CS/PLT	CUBIC FT	WEIGHT	PRICE
WXP49OR	18"	1500'	ORANGE	4	48	1.69	16.21	
WXP49RD	18"	1500'	RED	4	48	1.69	16.21	
WXP49BL	18"	1500'	BLUE	4	48	1.69	16.21	
WXP49GR	18"	1500'	GREEN	4	48	1.69	16.21	
WXP49YL	18"	1500'	YELLOW	4	48	1.69	16.21	

# Evolution Machine

**No charge with 5 pallets of film**



## Evolution Pallet Wrap Equipment

ITEM NO.	DESCRIPTION		PRICE
PWM10	Evolution Pallet Wrapper		
PWM-RAMP	Evolution Ramp		
Power Requirements	115V / 1Ph / 15A dedicated service	Control Features	LCD Screen and PLC Single button automatic cycle start Emergency stop button Variable film carriage speed / carriage pause control
Maximum Load Size	48" W x 48" L x 94.5" H		Variable turntable speed control Auto load height detection photo-eye
Maximum Load Weight	4,000 Lbs dynamic		
Turntable	59" diameter laser-cut steel plate 16 point cam-follower support system Turntable height 3" from floor Safety surround ring encloses turntable	Other Features	All heavy-duty steel construction
Film Delivery	Quick thread web tensioning system	Options	Heavy-duty steel ramp for pallet jack (41.5"W x 59"L) Photocell for dark cargo

- WXP31 18" x 6000' Machine Film
- Other films available
- FOB Plant

Entry Level Wrapper

## Evolution PRO Low Profile Stretch Wrapper with 250% Pre-Stretch

ITEM NO.	DESCRIPTION		PRICE
PSM10	Evolution PRO Pallet Wrapper		
PWM-RAMP	Evolution Ramp		
Power Requirements	110V / 1Ph / 15A dedicated service	Control Features	LCD Screen and PLC Single button automatic cycle start Emergency stop button Variable film carriage speed / carriage pause control
Maximum Load Size	50" W x 50" L x 94.5" H		Variable turntable speed control Auto load height detection photo-eye
Maximum Load Weight	4,400 Lbs dynamic		
Turntable	59" diameter laser-cut steel plate 16 point cam-follower support system Turntable height 3" from floor Safety surround ring encloses turntable	Other Features	All heavy-duty steel construction
Film Delivery	Quick thread system for 250% pre-stretch	Options	Heavy-duty steel ramp for pallet jack (41.5"W x 59"L) Photocell for dark cargo

- WXL16 20" x 63 ga x 5000' Machine Film
- WXL12 20" x 55 ga x 5000' Machine Film
- Other films available
- FOB Plant

OPTIONAL:



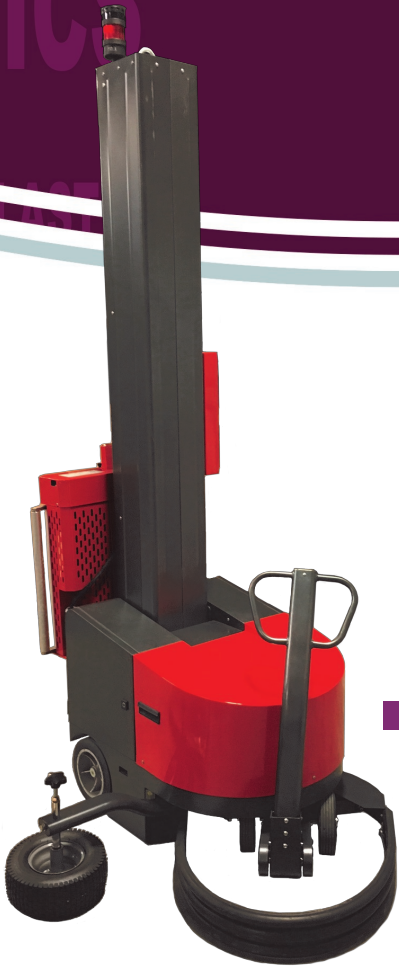
Loading ramp



Printed Film Adapter



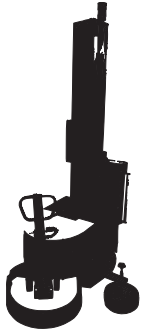
# EVOLUTION ROVER PRO



### WP600 Evolution Rover Pro Robotic Wrapper

Western Plastics introduces a self-propelled robot pallet wrapper. The Evolution Rover Pro revolves around the load and is for palletized loads of every shape, dimension and weight. The Evolution Rover Pro is able to work in tight spaces. It has great battery autonomy and can be easily moved from one load to another in different and heavy work conditions.

ITEM NO.	DESCRIPTION	PRICE
WP600	Evolution Rover Pro Pallet Wrapper	



# EVOLUTION ROVER

### WP601 Evolution Rover Robotic Wrapper

WP Evolution Rover Wrapper Pre-stretch self-walk wrapping machine utilizes a soft start/stop operation. This machine also features an automatic home position. The WP Rover Wrapper offers PLC control, reliable performance and easy operation.



ITEM NO.	DESCRIPTION	PRICE
WP601	Evolution Rover Pallet Wrapper	



All Purpose Laundry Wrap  
Extra Heavy Gauge

## Laundry Wrap All Purpose PVC Overwrap For Use in Commercial Laundries

ITEM NO	WIDTH	GAUGE	LENGTH	RLS/CS	CS/PLT	CUBIC FT	WEIGHT	PRICE
WLW06	24"	STD	5000'	1	30	1.45	28.80	
WLW02	30"	STD	5000'	1	30	1.78	36.10	
WLW08	32"	STD	5000'	1	30	1.91	38.40	
WLW03	34"	STD	5000'	1	30	2.03	40.80	
WLW04	36"	STD	5000'	1	30	2.14	43.20	
WLW34	34"	PREMIUM	5000'	1	30	2.03	50.40	
WLW36	36"	PREMIUM	5000'	1	30	2.14	53.28	
WLW13	24"	HD	5000'	1	30	1.46	36.10	
WLW07	30"	HD	5000'	1	30	1.79	45.10	
WLW11	32"	HD	5000'	1	30	1.91	48.10	
WLW14	34"	HD	5000'	1	30	2.03	51.00	
WLW09	36"	HD	5000'	1	30	2.14	54.10	

## Bander Carton Sealing Tape BOPP Packing Tape, Water Based

ITEM NO	SIZE	MIL	COLOR	RLS/CS	CS/PLT	CUBIC FT	PRICE
BT20	2" x 110yds	1.8	Clear	36	105	0.97	
BT30	3" x 110yds	1.8	Clear	24	105	0.97	



Static Dissipative Film  
Palletwrap

## Stretch-It DSF Static Dissipative Film Pallet Wrap

ITEM NO	WIDTH	GAUGE	LENGTH	RLS/CS	CS/PLT	CUBIC FT	WEIGHT	PRICE
DSF17	17"	80	1500'	4	48	1.69	32.64	
DSF20	20"	80	5000'	1	40	0.74	32.00	

## Weather All Pallet Wrap UVI Hand and Machine Film

ITEM NO	WIDTH	GAUGE	LENGTH	RLS/CS	CS/PLT	CUBIC FT	WEIGHT	PRICE
UVI18	18"	80	1500'	4	36	1.69	34.56	
UVI20	20"	80	5000'	1	40	0.74	32.00	



Hi Performance  
UVI Hand and Machine Film

# HYBRiD80<sup>®</sup> Plus



ITEM NO	WIDTH	LENGTH	RLS/CS	CS/PLT	PRICE
HPL33	2.6"	1000'	18	50	
HPL55	4.5"	1000'	12	50	
HPL71	13"	1500'	4	60	
HPL05	14.5"	1500'	4	60	
HPL15	17"	1500'	4	48	
HPL11	11"	2000'	BULK	150	
HPL13	13"	2000'	BULK	150	
HPL26	14.5"	2000'	BULK	150	
HPL28	17"	2000'	BULK	150	

### HYBRiD120 Plus

ITEM NO	WIDTH	LENGTH	RLS/CS	CS/PLT	PRICE
HPL01	18"	1000'	4	48	

## HYBRiD80<sup>®</sup> Stiff Formula Micron Pallet Wrap

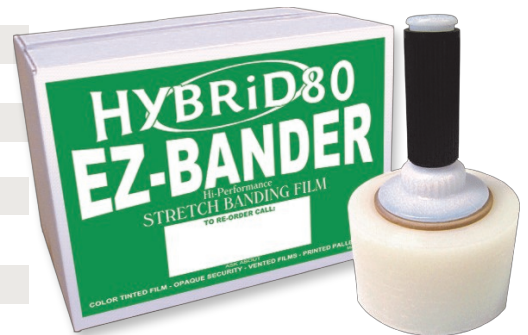
ITEM NO	WIDTH	THICKNESS	LENGTH	RLS/CS	CS/PLT	CUBIC FT	WEIGHT	PRICE
HYB03	3"	12 Micron	1000'	18	60	0.97	10.08	
HYB05	5"	12 Micron	1000'	12	60	0.97	11.28	
HYB06	3"	20.3 Micron	700'	18	60	0.97	12.24	
HYB07	5"	20.3 Micron	700'	12	60	0.97	13.44	

### Disposable Extended Core Wrap

HYB45	5"	12 Micron	1000'	15	60	0.97	14.10	
HYB46	5"	20.3 Micron	700'	15	60	0.97	16.80	
HYB12	20"	12 Micron	1000'	4	50	1.05	15.04	

### Handwrap on 3" Core

HYB56	16"	12 Micron	1500'	4	64	1.52	18.04	
HYB58	18"	12 Micron	1500'	4	64	1.69	20.32	



## HYBRiD80<sup>®</sup> Stiff Formula Micron Pallet Wrap - Colors



ITEM NO	WIDTH	THICKNESS	LENGTH	COLOR	RLS/CS	CS/PLT	CUBIC FT	WEIGHT	PRICE
HYB21	18"	16 Micron	1500'	Blue	4	48	1.69	27.22	
HYB22	18"	16 Micron	1500'	Black	4	48	1.69	27.22	
HYB23	18"	16 Micron	1500'	Red	4	48	1.69	27.22	
HYB24	18"	16 Micron	1500'	Green	4	48	1.69	27.22	

### Machine Grade - High Performance Color Film

HYB25	20"	16 Micron	5000'	Green	1	50	0.74	25.20	
HYB26	20"	16 Micron	5000'	Black	1	50	0.74	25.20	
HYB27	20"	16 Micron	5000'	Blue	1	50	0.74	25.20	
HYB28	20"	16 Micron	5000'	Red	1	50	0.74	25.20	

## HYBRiD80<sup>®</sup> Machine Grade

ITEM NO	WIDTH	THICKNESS	LENGTH	RLS/CS	CS/PLT	CUBIC FT	WEIGHT	PRICE
HYB33	30"	16 Micron	5000'	1	25	1.11	37.80	
HYB34	40"	16 Micron	5000'	1	20	1.48	50.40	
HYB35	50"	16 Micron	5000'	1	20	1.85	63.00	
HYB36	60"	16 Micron	5000'	1	20	2.22	75.60	
HYB37	70"	16 Micron	5000'	1	20	2.59	88.20	



# Perforated All Purpose Cling Sheets



ITEM NO	SIZE	SHEETS/ RL	RLS/ CS	CS/ PLT	CUBIC FT	WEIGHT	PRICE
307	10 X 10	1900	1	243	0.15	3.37	
308	10 X 12	1400	1	243	0.15	2.98	
309	11 X 11	1700	1	243	0.15	3.66	
310	12 X 10	1700	1	216	0.15	3.63	
311	12 X 12	1600	1	216	0.15	4.10	
312	12 X 14	1200	1	216	0.15	3.58	
313	14 X 14	1200	1	180	0.30	4.19	
314	15 X 15	1100	1	180	0.30	4.40	
315	16 X 16	1000	1	160	0.25	4.55	
316	18 X 18	900	1	140	0.25	5.18	
317	18 X 24	700	1	140	0.25	5.38	
318	20 X 20	600	1	144	0.46	4.27	
319	20 X 22	600	1	144	0.46	4.70	
320	22 X 22	600	1	108	0.46	5.16	
321	22 X 28	400	1	108	0.46	4.38	
322	24 X 18	700	1	108	0.46	5.38	
323	24 X 24	500	1	108	0.46	5.12	
324	24 X 28	400	1	108	0.46	4.78	

ITEM NO	SIZE	SHEETS/ RL	RLS/ CS	CS/ PLT	CUBIC FT	WEIGHT	PRICE
301	6 X 5	3000	1	360	0.10	1.60	
302	6 X 6	2600	1	360	0.10	1.66	
303	6 X 8	2400	1	360	0.10	2.05	
304	8 X 8	2400	1	324	0.12	2.74	
305	9 X 9	2200	1	324	0.12	3.17	
306	9 X 12	1600	1	324	0.12	3.07	



Safety Film Dispenser

## Wrapmaster

### Safety Dispenser For Foodwraps

ITEM NO	SIZE	DESCRIPTION	CUBIC FT	PRICE
179D	12"	Wrapmaster Dispenser	0.70	
180D	18"	Wrapmaster Dispenser	0.94	



Safety Foil Dispenser



## Wrapmaster Refill Rolls

ITEM NO	SIZE	RLS/CS	CUBIC FT	WEIGHT	PRICE
172	12 X 2000	2	0.40	13.50	
165	15 x 2000	2	0.60	16.90	
804	18 x 2000	2	0.60	20.20	

## Foilmaster Refill Rolls

### Regular Refill Rolls

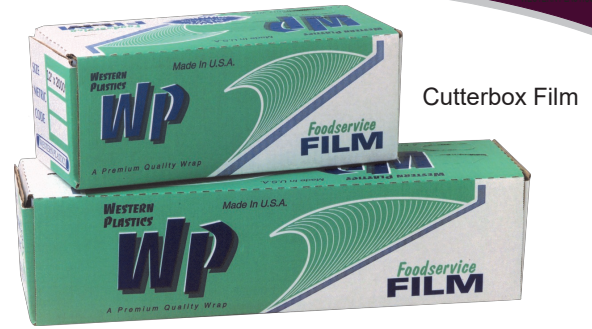
ITEM NO	SIZE	RLS/ CS	CUBIC FT	WEIGHT	PRICE
820	12 X 500 STD	2	0.40	9.40	
821	12 X 1000 STD	2	0.40	18.40	
822	18 X 500 STD	2	0.60	12.60	
823	18 X 500 HD	2	0.60	18.20	

### Economy Refill Rolls

ITEM NO	SIZE	RLS/ CS	CUBIC FT	WEIGHT	PRICE
827	12 X 500 STD	2	0.40	8.30	
828	12 X 1000 STD	2	0.40	16.50	
824	18 X 500 STD	2	0.60	11.00	
825	18 X 500 HD	2	0.60	17.00	

# Premium Cutterbox Film

ITEM NO	SIZE	RLS/CS	CS/PLT	CUBIC FT	WEIGHT	PRICE
121	12 X 1000	1	286	0.15	3.80	
122	12 X 2000	1	168	0.25	6.50	
123	12 X 3000	1	168	0.25	9.00	
152	15 X 2000	1	112	0.30	7.70	
181	18 X 1000	1	286	0.22	5.50	
182	18 X 2000	1	112	0.35	9.50	
183	18 X 3000	1	112	0.35	13.30	
141	24 X 1000	1	112	0.46	7.50	
142	24 X 2000	1	56	0.46	12.80	



Cutterbox Film



## Film Cutterbox Slide Cutter Blade

Cutterbox film provided with new attached slide cutter blade

ITEM NO	SIZE	RLS/CS	CS/PLT	CUBIC FT	WEIGHT	PRICE
122Z	12 X 2000	1	168	0.25	6.50	
123Z	12 X 3000	1	168	0.25	9.00	
182Z	18 X 2000	1	112	0.35	9.50	
183Z	18 X 3000	1	112	0.35	12.60	
142Z	24 X 2000	1	56	0.46	12.80	

# Premium Cutterbox Foil



Cutterbox Foil

ITEM NO.	SIZE	GAUGE	RLS/CS	CS/PLT	CUBIC FT	WEIGHT	PRICE
216	12 X 200	STD	12	72	0.95	23.00	
225	12 X 500	STD	1	189	0.15	4.90	
221	12 X 1000	STD	1	189	0.15	10.00	
229	12 X 2000	STD	1	60	0.25	19.70	
253	15 X 500	STD	1	140	0.30	6.90	

ITEM NO.	SIZE	GAUGE	RLS/CS	CS/PLT	CUBIC FT	WEIGHT	PRICE
251	15 X 1000	STD	1	140	0.30	12.70	
285	18 X 500	STD	1	168	0.25	7.70	
281	18 X 1000	STD	1	140	0.25	15.20	
245	24 X 500	STD	1	48	0.46	10.90	
241	24 X 1000	STD	1	48	0.46	21.00	
291	18 X 500	MED	1	168	0.25	9.80	
290	18 X 1000	MED	1	140	0.35	19.40	
226	12 X 500	HD	1	189	0.15	7.20	
222	12 X 1000	HD	1	189	0.25	14.00	
255	15 X 500	HD	1	140	0.30	9.00	
252	15 X 1000	HD	1	140	0.30	17.70	
286	18 X 500	HD	1	168	0.25	10.70	
282	18 X 1000	HD	1	112	0.35	21.20	
246	24 X 500	HD	1	48	0.46	14.50	
242	24 X 1000	HD	1	48	0.46	28.00	
224	12 X 500	EX-HD	1	189	0.15	11.00	
296	15 X 500	EX-HD	1	140	0.25	13.90	
287	18 X 500	EX-HD	1	140	0.25	16.70	
247	24 X 500	EX-HD	1	48	0.46	20.00	

### Cutterbox Film Rolls

ITEM NO.	SIZE	RLS/CS	CS/PLT	CUBIC FT	WEIGHT	PRICE
122P	12 X 2000	1	168	0.25	5.90	
182P	18 X 2000	1	112	0.35	8.80	

### Cutterbox Foil Rolls

ITEM NO.	SIZE	GAUGE	RLS/CS	CS/PLT	CUBIC FT	WEIGHT	PRICE
221P	12 X 1000	STD	1	189	0.15	8.50	
285P	18 X 500	STD	1	168	0.15	6.50	
281P	18 X 1000	STD	1	140	0.25	12.90	
286P	18 X 500	HD	1	168	0.25	9.50	
282P	18 X 1000	HD	1	140	0.25	18.00	

### Foil Containers

ITEM NO.	DESCRIPTION	PACK	CS/PLT	CUBIC FT	WEIGHT	PRICE
527-BP	7" Container Bulk Prestige	500	63	1.7	8.85	
527-L200P	7" Round Combo W/Lid Prestige	200	75	1.0	8.33	
509-BP	9" Container Bulk Prestige	500	24	3.2	16.30	
509-L200P	9" Round Combo W/ Lid Prestige	200	40	1.7	13.36	
5130P	Full Steam Deep Prestige	50	36	2.15	15.40	
5130PSS	Full Steam Deep Prestige SS	50	42	2.15	13.20	
5132P	Half Steam Deep Prestige	100	42	1.84	9.70	
5132PSS	Half Steam Deep Prestige SS	100	54	1.55	8.30	

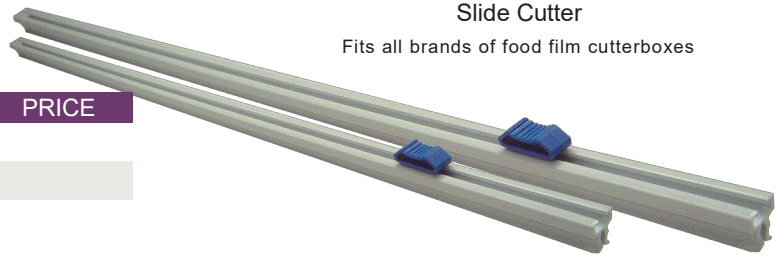


# Prestige



## Cutterbox Slide Cutter

ITEM NO	WIDTH	WEIGHT	PER CS	PRICE
431	12"	0.40	1	
437	18"	0.60	1	
433	24"	0.70	1	



Slide Cutter  
Fits all brands of food film cutterboxes

## Produce Film All Purpose Wrap



ITEM NO	WIDTH	LENGTH	RLS/PLT	CUBIC FT	WEIGHT	PRICE
PW12	12"	5000'	60	0.48	19.30	
PW13	13"	5000'	60	0.52	20.80	
PW14	14"	5000'	60	0.56	22.50	
PW15	15"	5000'	60	0.59	24.20	
PW17	17"	5000'	60	0.67	27.30	
PW18	18"	5000'	60	0.70	29.00	
PW19	19"	5000'	60	0.71	30.50	
PW20	20"	5000'	60	0.78	32.10	

All Purpose Produce Film

## Shrink Films All Purpose Food Grade, Perforated to Tear



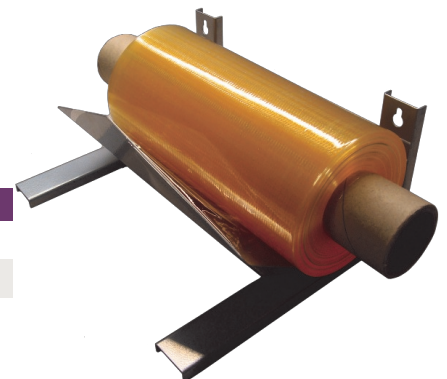
Perforated Sheets Foodwrap

ITEM NO	SIZE	RLS/CS	SHEETS/ROLL	CS/PLT	CUBIC FT	WEIGHT	PRICE
505	11 X 11	1	1500	243	0.15	4.80	
506	12 X 12	1	1400	216	0.15	5.70	
507	13 X 13	1	1300	180	0.30	6.30	
508	14 X 14	1	1100	180	0.30	6.30	
509	15 X 15	1	1000	180	0.30	6.50	
510	16 X 16	1	1000	160	0.25	6.60	
511	17 X 17	1	900	140	0.25	7.40	
512	18 X 18	1	900	140	0.25	8.40	
513	20 X 20	1	600	144	0.46	7.50	
514	22 X 22	1	600	108	0.46	8.70	
515	24 X 24	1	500	108	0.46	8.70	

ITEM NO	SIZE	RLS/CS	SHEETS/ROLL	CS/PLT	CUBIC FT	WEIGHT	PRICE
501	6 X 6	1	2600	360	0.10	3.30	
502	8 X 8	1	2200	324	0.12	4.10	
503	9 X 9	1	2000	324	0.12	4.60	
504	10 X 10	1	1700	243	0.15	4.80	

## Perforated Dispenser

ITEM NO	DESCRIPTION	PER CS	CS/PLT	CUBIC FT	WEIGHT	PRICE
423	Single Tier	1	140	0.50	4.0	
425	Two Tier	1	100	0.60	6.0	





# El Dorado Economy Aluminum Foil Rolls

ITEM NO	SIZE	GAUGE	RLS/CS	CS/PLT	CUBIC FT	WEIGHT	PRICE
275	12 X 500	STANDARD	1	189	0.15	4.20	
244	12 X 1000	STANDARD	1	189	0.15	8.50	
294	18 X 500	STANDARD	1	168	0.25	6.50	
293	18 X 1000	STANDARD	1	140	0.25	12.90	
297	18 X 500	HEAVY	1	168	0.25	9.50	
299	18 X 1000	HEAVY	1	112	0.35	18.00	



Economy Foil



Economy Pop-Up Sheets

Pop-Up Foil Sheets

## Interfolded Foil Sheets Pop-Up Aluminum Foil Sheets

ITEM NO	SIZE	PACK	COLOR	CS/PLT	CUBIC FT	WEIGHT	PRICE
631	9" X 10 3/4"	12 X 200	SILVER	50	1.05	13.00	
632	9" X 10 3/4"	6 X 500	SILVER	60	0.75	15.00	
630	9" X 10 3/4"	12 X 200	GOLD	50	1.05	13.00	
642	9" X 10 3/4"	6 X 500	BLUE STRIPE	60	0.75	15.00	
637	9" X 10 3/4"	6 X 500	RED STRIPE	60	0.75	15.00	
636	9" X 10 3/4"	6 X 500	GREEN STRIPE	60	0.75	15.00	
633	12" X 10 3/4"	12 X 200	SILVER	40	1.35	22.00	
634	12" X 10 3/4"	6 X 500	SILVER	40	1.10	25.50	
El Dorado Interfolded Foil Sheets							
643	12" X 10 3/4"	12 X 200	SILVER	40	1.30	18.50	
635	12" X 10 3/4"	6 X 500	SILVER	40	1.10	20.70	

## Cater Trays

ITEM NO	DESCRIPTION	PACK	CS/PLT	CUBIC FT	WEIGHT	PRICE
5512	12" Flat Tray	25	144	0.48	4.70	
5516	16" Flat Tray	25	105	0.83	7.00	
5518	18" Flat Tray	25	68	1.24	10.00	
5412	12" Lazy Susan Tray	25	144	0.48	4.00	
5416	16" Lazy Susan Tray	25	105	0.83	7.00	
5418	18" Lazy Susan Tray	25	68	1.24	10.00	
5312	12" Dome Lid	25	84	1.19	3.50	
5316	16" Dome Lid	25	40	2.19	5.50	
5318	18" Dome Lid	25	35	2.59	7.00	

Caterware Trays



Mill Roll Foodwrap

## Mill Roll Film All Purpose Foodservice Wrap

ITEM NO	WIDTH	LENGTH	RLS/CS	CS/PLT	CUBIC FT	WEIGHT	PRICE
401	12"	5280'	1	50	0.56	15.70	
403	18"	5280'	1	50	0.80	22.50	
404	24"	5280'	1	25	1.06	29.30	

### Stainless Steel Dispenser For Mill Roll Film

ITEM NO	WIDTH	RLS/CS	CS/PLT	CUBIC FT	WEIGHT	PRICE
412	12"	1	48	0.75	7.00	
418	18"	1	48	0.77	8.00	
424	24"	1	48	1.40	10.00	

## Meat Film All Purpose Machine Film, Hi-Performance

ITEM NO	WIDTH	GAUGE	LENGTH	RLS/PLT	CUBIC FT	WEIGHT	PRICE
MW11	11"	60	5000'	60	0.45	18.80	
MW12	12"	60	5000'	60	0.48	20.40	
MW13	13"	60	5000'	60	0.52	22.10	
MW14	14"	60	5000'	60	0.56	23.80	
MW15	15"	60	5000'	60	0.59	25.50	
MW16	16"	60	5000'	60	0.63	27.20	
MW17	17"	60	5000'	60	0.67	29.00	
MW18	18"	60	5000'	60	0.70	30.30	
MW19	19"	60	5000'	60	0.71	32.30	
MW20	20"	60	5000'	60	0.78	34.00	
MW24	24"	60	5000'	60	0.94	40.90	
MW30	30"	60	5000'	60	1.16	51.10	
MW36	36"	60	5000'	30	1.38	61.30	
MT11	11"	70	4000'	60	0.45	18.00	
MT13	13"	70	4000'	60	0.52	21.60	
MW16-DG	16"	70	4500'	60	0.63	27.60	



Supermarket, Deli, Bakery,  
Meat and Produce Film

## Meat Film All Purpose Handwrap

ITEM NO	WIDTH	GAUGE	LENGTH	RLS/PLT	CUBIC FT	WEIGHT	PRICE
MWL12	12"	55	5000'	60	0.48	20.00	
MWL14	14"	55	5000'	60	0.52	23.30	
MWL15	15"	55	5000'	60	0.59	24.90	
MWL16	16"	55	5000'	60	0.63	26.50	
MWL17	17"	55	5000'	60	0.67	28.00	
MWL18	18"	55	5000'	60	0.70	29.80	
MWL20	20"	55	5000'	60	0.78	33.00	

## Meat Film All Purpose Machine Film, Hi-Performance - Ex-Heavy

ITEM NO	WIDTH	GAUGE	LENGTH	RLS/PLT	CUBIC FT	WEIGHT	PRICE
MWH12	12"	70	4000'	60	0.48	18.50	
MWH13	13"	70	4000'	60	0.52	20.30	
MWH14	14"	70	4000'	60	0.56	21.70	
MWH15	15"	70	4000'	60	0.59	23.30	
MWH16	16"	70	4000'	60	0.63	24.70	
MWH17	17"	70	4000'	60	0.67	26.22	
MWH18	18"	70	4000'	60	0.70	27.80	
MWH19	19"	70	4000'	60	0.71	29.10	
MWH20	20"	70	4000'	60	0.78	31.10	
MWH24	24"	70	4000'	60	0.94	37.30	

## Meat Film All Purpose Handwrap

ITEM NO	WIDTH	GAUGE	LENGTH	RLS/PLT	CUBIC FT	WEIGHT	PRICE
MWX12	12"	50	5000'	60	0.48	18.00	
MWX15	15"	50	5000'	60	0.59	22.60	
MWX17	17"	50	5000'	60	0.67	25.60	
MWX18	18"	50	5000'	60	0.70	27.10	



All Purpose Meat Film

## Foil Containers - Rounds



Aluminum Rounds and Lids



ITEM NO	DESCRIPTION	PACK	CS/PLT	CUBIC FT	WEIGHT	PRICE
527-B	7" Round Container Bulk	500	63	1.70	10.50	
527-L	7" Laminated Foil Lid	500	180	0.30	9.80	
527-DL	7" Plastic Dome Lid	500	99	1.40	8.20	
527-L200	7" Round Combo W/ Lid	200	75	1.00	9.50	
527-L250	7" Round Combo W/ Lid	250	60	1.20	11.50	
527-DL250	7" Round Combo W/ Dome Lid	250	60	1.20	11.50	
508-B	8" Round Container Bulk	500	24	2.50	17.00	
508-L	8" Laminated Foil Lid	500	100	0.40	14.20	
508-DL	8" Plastic Dome Lid	500	140	1.20	11.10	
508-L200	8" Round Combo W/ Bd Lid	200	40	1.40	11.00	
508-L250	8" Round Combo W/ Bd Lid	250	36	1.60	13.00	
508-DL250	8" Round Combo W/ Dome Lid	250	36	1.60	13.00	
509-B	9" Round Container Bulk	500	24	3.20	18.00	
509-L	9" Laminated Foil Lid	500	210	0.50	15.90	
509-DL	9" Plastic Dome Lid	500	128	1.50	12.40	
509-L200	9" Round Combo W/ Lid	200	40	1.70	14.60	
509-L250	9" Round Combo W/ Lid	250	32	2.00	17.60	
509-DL250	9" Round Combo W/ Dome Lid	250	32	2.00	17.60	



Foil Containers and Trays

## Foil Containers - Steam Tables

ITEM NO	DESCRIPTION	PACK	CS/PLT	CUBIC FT	WEIGHT	PRICE
5112	Half Steam Shallow	100	42	1.61	9.10	
5122	Half Steam Medium	100	42	1.84	9.30	
5132	Half Steam Deep	100	42	1.84	10.80	
5116	Half Steam Extra Deep	100	36	2.70	19.00	
5001	Half Steam Lid	100	90	0.60	4.60	
5110	Full Steam Shallow	50	42	1.84	13.60	
5120	Full Steam Medium	50	42	1.84	14.20	
5130	Full Steam Deep	50	36	2.15	16.90	
5000	Full Steam Lid	50	72	0.82	8.40	
5162	1/3 Steam Table Deep	100	63	2.50	15.00	
5006	1/3 Steam Table Lid	100	75	0.63	6.00	
5139-L200	3 Comp Hi Divider Combo	200	30	1.15	14.00	
5139-L250	3 Comp Hi Divider Combo	250	30	1.35	16.00	
5139-B	3 Comp Hi Divider Bulk	500	36	2.10	19.00	
5139-L	Board Lid	500	125	0.32	13.00	
5298	Large Rectangular Roaster	50	30	1.47	15.00	
5278	Large Oval Roaster	25	32	2.86	13.00	
5142	Half Size Sheet Cake	100	40	2.33	17.00	
5012	1/4 Steam Deep	250	56	1.68	12.50	
5003	1/4 Steam Lid	250	72	0.73	6.00	

ITEM NO	DESCRIPTION	PACK	CS/PLT	CUBIC FT	WEIGHT	PRICE
5705	1 lb. Oblong Container	1000	20	4.31	20.50	
5705-L	1 lb. Oblong Lid	1000	192	4.90	12.65	
5705-DL	1 lb. Oblong Dome Lid	1000	160	0.50	9.90	
5708	1 1/2 lb. Oblong Shallow	500	48	2.09	15.00	
5708-L	1 1/2 lb Oblong Lid	500	180	5.05	13.35	
5708-DL	1 1/2 lb Oblong Dome Lid	500	160	0.62	9.90	
5747	1 1/2 lb. Oblong Container	500	40	2.96	16.00	
5747-L	1 1/2 Oblong Lid	500	240	2.89	8.80	
5747-DL	1 1/2 lb Oblong Dome Lid	500	160	0.32	7.90	
5758	2 lb. Oblong Container	500	20	2.29	20.00	
5758-L	2 lb. Oblong Container	500	180	5.20	13.85	
5758-DL	2 lb Oblong Dome Lid	500	160	0.58	10.20	
588-B	2 1/4 lb. Oblong Bulk	500	36	1.79	14.99	
588-L	Foil Laminated Board Lid	500	210	0.29	10.00	
588-DL	2 1/4 lb. Plastic Dome Lid	500	128	0.85	10.00	
588-L250	2 1/4 lb. Combo W/ Lid	250	36	1.40	14.50	
5902	4 lb. Oblong Container	250	20	4.03	22.00	
5902-L	4 lb. Oblong Lid	250	140	6.37	15.85	
5902-DL	4 lb Oblong Dome Lid	250	160	1.24	10.30	
5404	5 lb Oblong Container	250	36	2.67	23.00	
5404-L	5 lb Oblong Container Lid	250	216	4.12	10.50	

# HYBRID80<sup>®</sup>

Plus

## ENGINEERED CORELESS 'Greener' Stretch Films

Lighter weight rolls eliminate the need to stretch film to get the maximum performance

- Better For the Environment:** Eliminates paperboard core, film is 100% recyclable, reduced energy consumption in transportation and storage costs.
- Reduce Storage and Disposal Costs:** No cardboard core means no associated storage or disposal costs.
- Improved Ergonomics:** Reusable plastic dispenser (supplied) improves wrapping control. Coreless means roll weight is reduced by up to 15%, improving the user experience.
- Freight and Warehouse Savings:** More rolls/cases per pallet means lower transportation and storage costs.
- Less Waste:** No wasted film left on the core. Every last foot of stretch film is utilized.



### ENGINEERED CORELESS

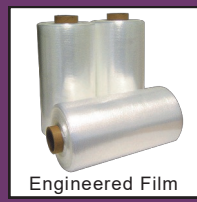
ITEM NO.	WIDTH	LENGTH	RLS/PLT	PRICE
HCL25	15"	1500'	196	
HCL35	15"	2000'	144	
HCL75	18"	1500'	189	
HCL85	18"	2000'	144	



Engineered Palletwrap



Economy Foil



Engineered Film



Foil Containers



Hand & Machine Rolls



Cutterbox Foil

# WESTERN PLASTICS

2399 US 41 SW  
Calhoun, GA 30701  
Tel: (800) 752-4106  
Fax: (706) 625-0003

41995 Remington Ave  
Temecula, CA 92590  
Tel: (800) 442-9727  
Fax: (800) 979-7277

5850 Keaton Crescent  
Mississauga, ONT, L5R 3K2  
Tel: (800) 957-8886  
Fax: (905) 568-9399

International - Phone: (951) 695-1983 Fax: (951) 695-2004