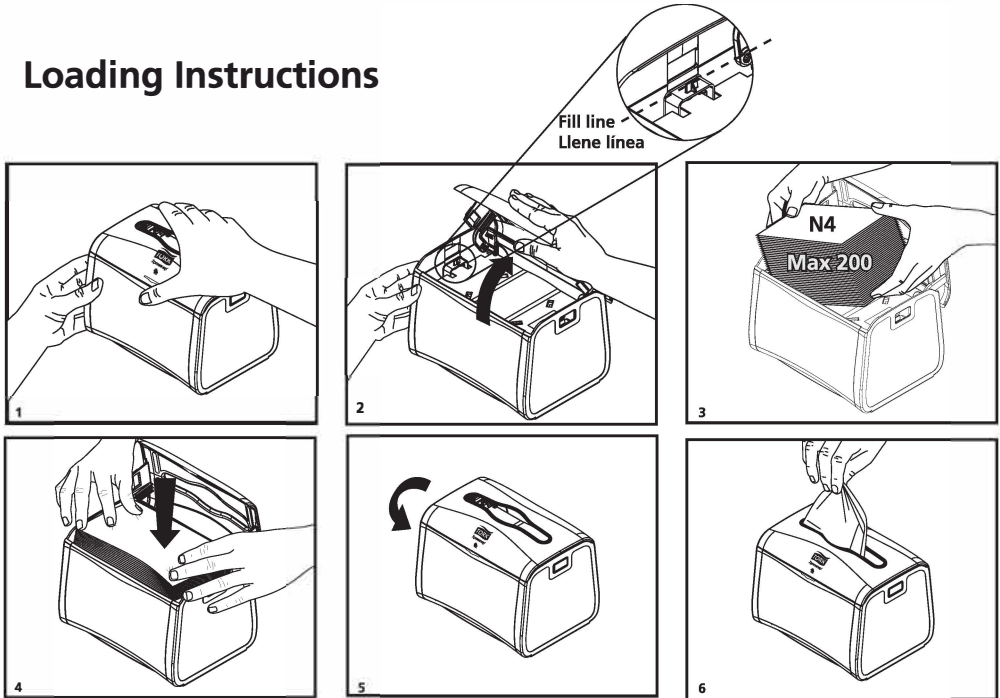




Xpressnap[®] Tabletop Dispenser N4 System



Loading Instructions



Cleaning Instructions Instrucciones de nettoyage

CLEANING:

Use mild cleaners. Wipe with cloth using soap and water. Do not use abrasives. Dispenser is not dishwasher safe. Dispenser can be completely disassembled for cleaning, if necessary.

LIMPIEZA:

Use limpiadores suaves. Frote con un paño, usando agua y jabón. No use abrasivos. El dispensador no es apto para lavar en máquinas lavavajillas. En caso de ser necesario, puede desmontarse completamente para su limpieza.

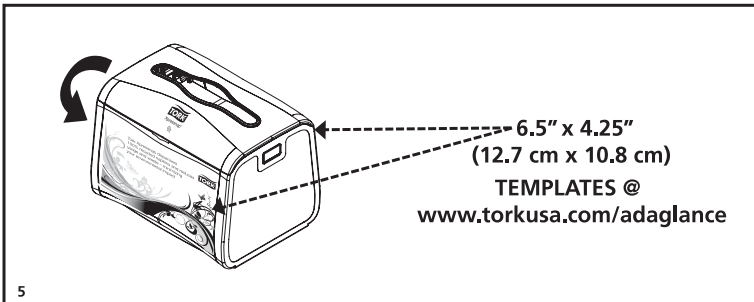
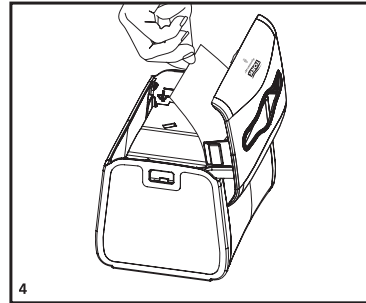
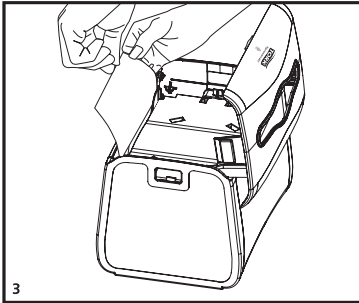
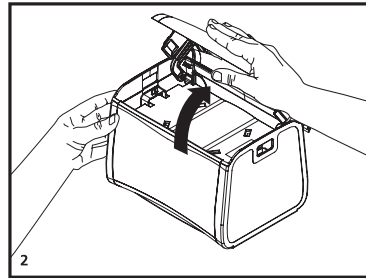
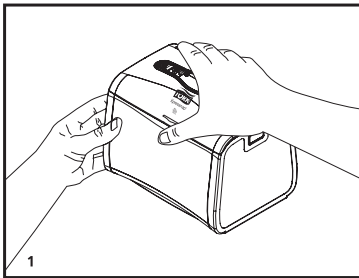


Xpressnap[®] Tabletop Dispenser N4 System



AD-a-Glance Feature

Espace publicitaire AD-a-Glance





*
It's better
business.
Hands down.

Tork Xpressnap® Signature Dispenser System Launch

Tabletop Dispenser Opening Instructions

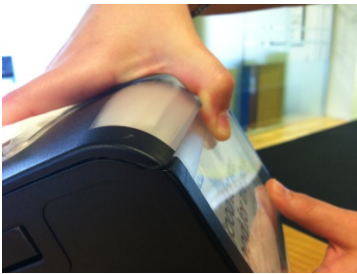


Below you will find a step by step guide for opening the Xpressnap Signature Tabletop dispenser.

Please note: The 'latches' located on the sides of the dispenser are no longer used as "buttons" to open the dispenser. **These latches** help to secure the lid to the base of the dispenser, and **should not be used for opening.**



1. To open the dispenser, place your hand on top of the dispenser, and position your thumb under the lip on the front of the dispenser.



2. Slightly squeeze the lid (from the front and back) and press your thumb in under the lip on the front of the dispenser.



3. As you squeeze, the latches will slightly release. Pull up on the lip to open the lid.

To prevent our end-customer's patrons from opening the dispenser, the opening design is meant to be non-intuitive, so they cannot easily open. Simple training for your customers and everyday use will allow for ease of opening when needed to refill.

If you have any questions, please feel free to reach out to Susan Murphy
(susan.murphy@essity.com).