



**Tork Xpressnap Cafe Dispenser:**

N10 Xpressnap Cafe System:  
 31XRT (Granite), 32XRT (Black), 41XRT (Red), 45XRT (Green),

**Dispenser Dimensions H x W x D Inches (cm):**

5.875 x 5.875 x 5.9375 (14.9 x 14.9 x 15.1cm)

**Xpressnap N10 Product Options:**

DX600 (Tork Advanced, White)  
 DX606E (Tork Universal, Natural)



**Part Description**

LID
MOUTH
LOADING LABEL
SIDE OPENING TABS
PLATEN
AD-A-GLANCE HOLDER (one on both sides)

**Available Colors**



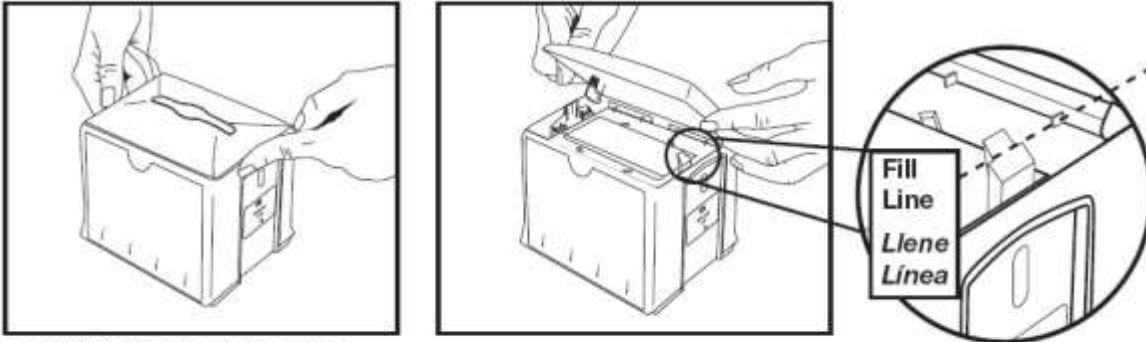
### Loading Instructions

## Xpressnap Café™ Dispenser

Loading Instructions  
*Instrucciones de carga del dispensador*

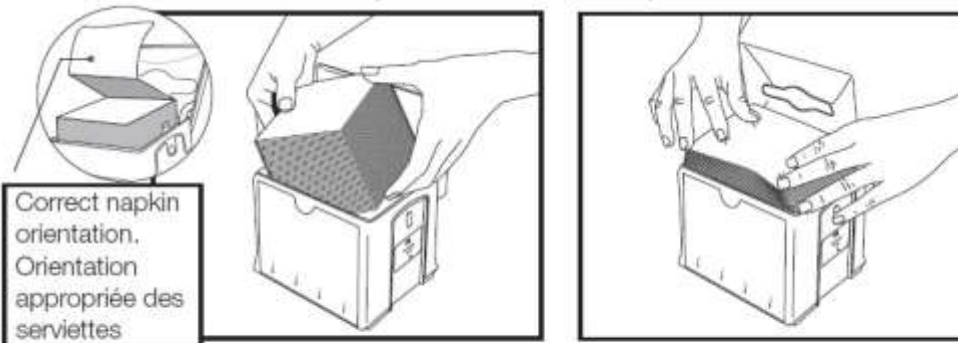
Napkin Loading instructions:

*Instrucciones de carga de las servilletas:*



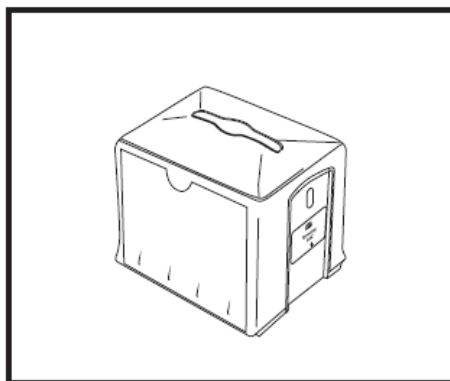
1. Push in to open top cover.

*Presione hacia adentro para abrir la cubierta superior*

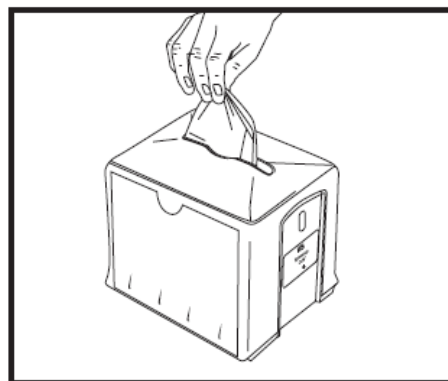


2. Insert napkins perpendicular to the dispenser and push down. Fill line is the top of side tabs.

*Insérez les serviettes de table perpendiculairement au distributeur et enfoncez. La ligne de niveau de remplissage est située sur le haut des pattes latérales.*



3. Close top cover.  
*Cierre la cubierta superior.*



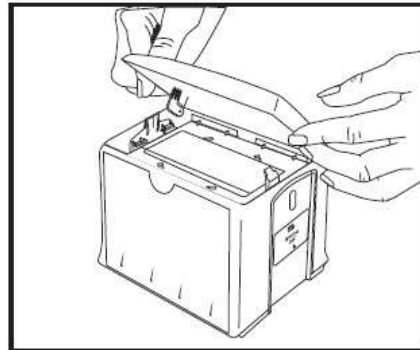
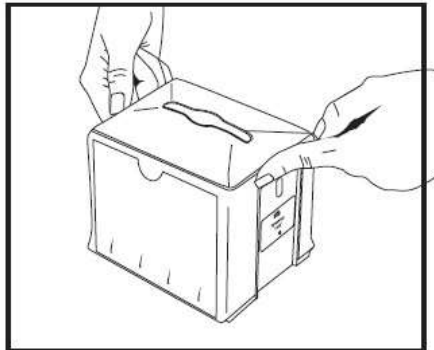
4. Start first napkin.  
*Extraiga la primera servilleta.*



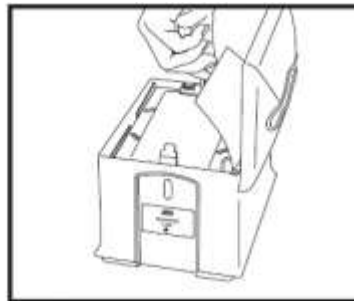
## Xpressnap Café Dispenser

AD-a-Glance® Advertising Feature & Cleaning Instructions  
*Espace publicitaire AD-a-Glance® et instructions de nettoyage*

AD-a-Glance Feature:  
*Espace publicitaire AD-a-Glance:*



1. Push in to open top cover.  
*Abra la cubierta superior.*

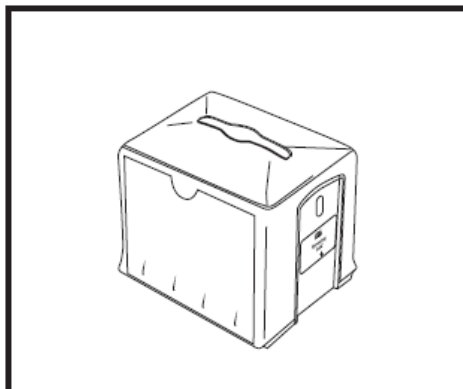


**Note:** Heavy card stock is recommended. Trim for exact fit.

**Nota:** Se recomienda utilizar una tarjeta de material grueso. Ajuste la medida hasta lograr una adaptación exacta.

2. Insert a 5" x 3" (12.7cm x 7.62cm) advertising sheet (downloadable templates available at [www.torkusa.com/adaglance](http://www.torkusa.com/adaglance) or create your own.) into each template holder on both sides of the Xpressnap Café dispenser.

*Inserte una hoja con publicidad (Téléchargez nos modèles disponibles sur [www.torkusa.com/adaglance](http://www.torkusa.com/adaglance) ou créez votre propre publicité.) de 12.7cm x 7.62cm (5" x 3") en los soportes de plantilla ubicados a ambos lados del dispensador Xpressnap Café para mesa.*



3. Close top cover.  
*Cierre la cubierta superior.*

There are downloadable Ad-a-Glance templates on the Tork website at:  
<http://www.torkusa.com/download/ad-a-glance-templates/cafe-dispenser/>

## **Preventive Maintenance**

### **CLEANING:**

Use mild cleaners. Wipe with cloth using soap and water. Do not use abrasives. Dispenser is not dishwasher safe. Dispenser can be completely disassembled for cleaning, if necessary.

### **LIMPIEZA:**

Use limpiadores suaves. Frote con un paño, usando agua y jabón. No use abrasivos. El dispensador no es apto para lavar en máquinas lavavajillas. En caso de ser necesario, puede desmontarse completamente para su limpieza.

## **Troubleshooting**

### **Problem: Cover is not closing.**

- Inspect the side opening tabs (see Parts section on page 1) for any damage. Also inspect ribs on the lid that should engage the side tabs to lock the lid closed. If either of these is damaged, the cover may not lock shut.
- Be sure that the number of napkins in the dispenser does not exceed capacity (200 napkins).
- If the lid still does not close after these steps, contact the Essity Quality Coordinator.

### **Problem: Napkins are shredding or tearing as they dispense.**

- Be sure that the number of napkins in the dispenser does not exceed capacity (200 napkins).
- Inspect the side tabs and the mouth on the cover (see Parts section on page 1). Any contaminate in these areas that the napkins catch on while dispensing could be causing the issue.
- If the problem continues after following the previous steps, contact the Essity Quality Coordinator. Please try and locate the date code on the case of napkins before calling.

### **Problem: Any other problem not stated above.**

- Contact the Essity Quality Coordinator.

## **Contacting Essity**

Before contacting Essity, locate and make note of the date code label inside of the dispenser. This should be a sticker located on the side of the clear platen inside the dispenser (see photo below).



To contact the Essity Quality Coordinator, dial 1-866-722-6659 and press 6.