

**CLOROX**PRO<sup>®</sup>

# Product Reference Guide

## Clorox<sup>®</sup> Urine Remover

*For Stains & Odors*



# Clorox® Urine Remover

- ▶ **Attacks urine odors and stains at the source with the cleaning power of hydrogen peroxide**
- ▶ **Removes stains and odors on porous and soft surfaces**
- ▶ **Eliminates the toughest odors with a subtle, clean scent, not a masking fragrance**



Clorox® Urine Remover  
32 fl. oz. Trigger Spray  
Item No.: 31036  
128 fl. oz. Refill  
Item No.: 31351

## At a Glance Clorox® Urine Remover

<b>Product Type</b>	Ready to use
<b>Cleaning Chemical Type</b>	▶ Cleaner (hard/soft surfaces)
<b>Active Ingredient</b>	N/A
<b>pH</b>	5-6
<b>Odor</b>	Fruity Floral
<b>Shelf Life</b>	1 year from the manufactured date on label
<b>Toxicity Signal Word</b>	Caution   <a href="#">SDS link</a>
<b>HMIS Rating</b>	0-0-0-A
<b>PPE</b>	Safety glasses recommended if splashes are likely to occur, and respiratory protection should be worn if exposure limits are exceeded



# Directions for Use

## Step 1: Preparation



1. Gather supplies.



2. Wash hands with soap and water.



3. Put on PPE required by your facility!<sup>1</sup>

1. Eye protection is recommended if splashes are likely to occur, and respiratory protection should be worn if exposure limits are exceeded



4. Make sure the area is well-ventilated.

## Step 2: Application

### To clean: general instructions



1. Turn nozzle to "ON" position.



2. Spray directly onto stain until completely covered.



3. Rinse with water or wipe with a clean damp cloth.

### To clean grout and tougher stains



1. Spray directly onto stain until completely covered.



2. Wait 5 minutes.



3. Rinse with water or wipe dry.



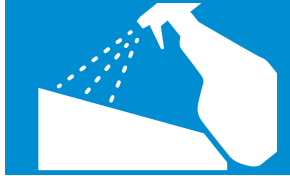


# Directions for Use (cont.)

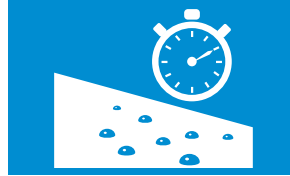
## To clean carpet, mattresses and upholstery stains



**1.** Blot with a dry clean cloth or towel to absorb excess liquid.



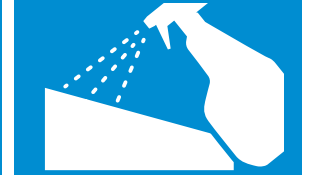
**2.** Spray directly onto stain until completely covered.



**3.** Allow to stand for 3 minutes.

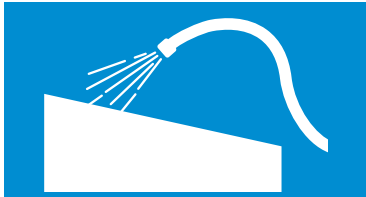


**4.** Blot area with a clean damp cloth.

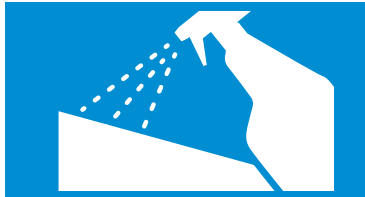


**5.** Repeated application may be necessary for heavy or old stains. Keep children and pets from contact with sprayed area until dry.

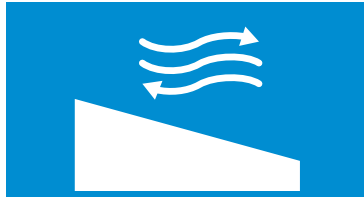
## For outdoor use (concrete, sidewalks, outdoor tile and grouting spots)



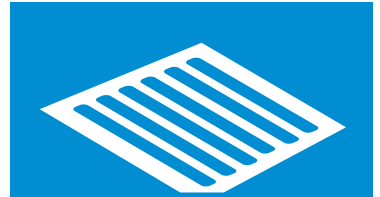
**1.** Wash outdoor surfaces with water to remove debris and soils.



**2.** Spray product directly onto area with stubborn urine stain or odor.



**3.** Allow to air dry.



**4.** DO NOT allow product or rinse water to enter storm drain, lakes, streams or other bodies of water.

## Step 3: Wrap Up



**1.** Discard disposable supplies; clean and disinfect reusable tools.



**2.** Store products.



**3.** Remove PPE.



**4.** Wash hands with soap and water.





# Common Applications



## Veterinary Care

- ▶ Animal equipment
- ▶ Crates
- ▶ Playpens
- ▶ Veterinary care surfaces



## Long-Term Care Facilities

- ▶ Mattresses
- ▶ Bedpans
- ▶ Toilets
- ▶ Floors around toilets



## Soft Surfaces

- ▶ Carpet
- ▶ Mattresses
- ▶ Upholstery
- ▶ Fabric



## Restrooms — Disinfect

- ▶ Tile
- ▶ Grout
- ▶ Urinal
- ▶ Flooring



## Children's Areas

- ▶ Changing tables
- ▶ Child seats
- ▶ High chairs
- ▶ Kid's play equipment





# Surface Compatibility

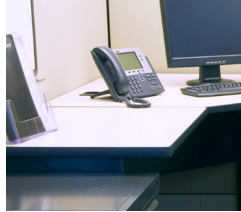
**This product is safe for use on these surface materials.\***



Enamel



Chrome



Formica®



Glass



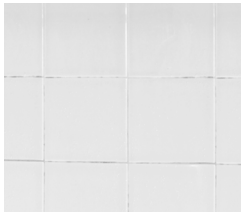
Glazed Ceramic



Glazed Porcelain†



Glazed Porcelain Enamel



Glazed Tile



Grout



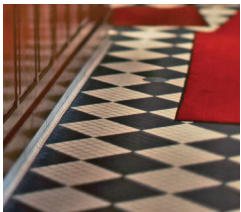
Sealed Granite



Stainless Steel



Laminate



Linoleum



Marlite®



Metal Surfaces



Naugahydel®



Plastic



Plexiglas®



Porcelain Enamel



Rubber



Sealed Fiberglass



Synthetic Marble



Vinyl

Not recommended for brass or natural marble

## PRO TIP

**If you're unsure about compatibility with a certain surface, contact the manufacturer or test it on the surface in an inconspicuous area prior to using it more widely. To prevent residue buildup and further reduce the risk of potential surface damage, wipe periodically with a clean damp cloth to remove residue and excess disinfectant.**

\* Compatibility with equipment and surfaces will vary based on the components and material coatings. Check with the manufacturer for guidance on approved products for disinfection.

† Avoid prolonged contact with porcelain.

Marlite® is a registered trademark of Marlite, Inc.

Formica® is a registered trademark of The Diller Corporation.

Corian® is a registered trademark of E. I. du Pont de Nemours and Company.

Clorox® Urine Remover

32 fl. oz. Trigger Spray, Item No.: 31036/128 fl. oz. Refill, Item No.: 31351



Use products as directed. CloroxPro recommendations. Your facility's protocol may vary.

© 2021 Clorox Professional Products Company.

NI-55993



# Product Storage & Disposal

## STORAGE

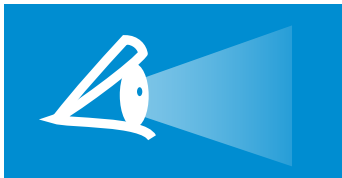
### Do's



Secure bottle (container tightly closed)



Store in a dry, cool and well-ventilated place



Store at or below eye level for safety precaution

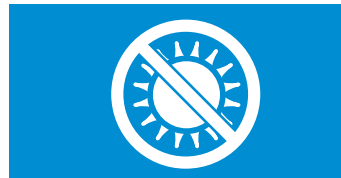
### Don'ts



Do not freeze



Do not store in a location accessible to children



Keep out of direct sunlight

## DISPOSAL

### Chemical

#### Do's



Dispose of at an approved waste disposal facility



Contact your local environmental, health or solid waste agency for proper disposal of the chemical

#### Don'ts



Pour it down the drain or toilet, on the ground, into storm sewers



Dispose of with regular trash

### Container

#### Do's



Recycle plastic container

#### Don'ts



Reuse or refill plastic container





# Product Safety

**Precaution for safe handling:** Handle in accordance with good industrial hygiene and safety practice. Avoid contact with skin, eyes or clothing. Do not eat, drink or smoke when using this product.

## First Aid:



**Eye contact:** may cause slight irritation

- ▶ Rinse thoroughly with plenty of water, also under the eyelids.



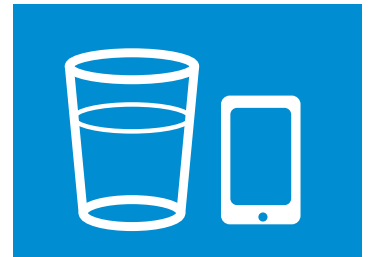
**Skin contact:** No known effects under normal conditions

- ▶ Wash with soap and water.



**Inhalation:** no known effects under normal use conditions

- ▶ Move to a place with fresh air.
- ▶ If person is not breathing, call 911, then give artificial respiration, preferably mouth to mouth if possible.



**Ingestion:** may cause irritation to mucous membranes and gastrointestinal tract, nausea, vomiting and diarrhea

- ▶ Sip a glassful of water if able to swallow. Do NOT induce vomiting.

Call a poison control center or doctor immediately for treatment advice. Have the product container or label with you when calling or going for treatment.

### National Fire Protection Association (NFPA) Ratings:

Health Hazard: 0  
 Flammability: 0  
 Instability: 0  
 Physical and Chemical Hazards: None

### Hazardous Material Identification System (HMIS) Ratings:

Health Hazard: 0  
 Flammability: 0  
 Physical Hazard: 0  
 Personal Protection: A

**Questions:** Call 1-800-492-9729

**SDS:** Much of this information and more can be found on the SDS. Make sure to have a printed product SDS within 10 min of travel time, so it is easily accessible. Click [here](#) for a link to the product SDS.

