



**BUFFET & CATERING**  
ACCESSORIES & DISPOSABLES

## **BUFFET DISPLAY ACCESSORIES 2022**



# FOLDING CRATE

## STANDS

Perfect for room service, breakfast in bed or as a riser on your serving presentation. Our new folding crate stands work with our full-size crates (CRATE11, CRATE11BK, CRATESB11, CRATESB11BK).

- Available in both Acacia and Black Powder Coated Rubberwood
- Integrated cutouts for easy handling while transporting stand and crate
- 27 x 13 $\frac{3}{4}$  x 8 $\frac{3}{4}$ " (open) and 21 $\frac{1}{2}$  x 13 $\frac{3}{4}$  x 1 $\frac{1}{8}$ " (closed)
- Stackable for convenient storage
- Weight limit: 30 lbs

HELPFUL HINT: We do not recommend using folding crate stands to transport contents; position stand, add crate, and fill.



Item	Description	Min Order/ Case Pack
<b>FOLDING CRATE STANDS</b>		
a. 10765	Folding Crate Stand to Fit Full Size Crates, Acacia	1 ea / 4 ea
b. 10766	Folding Crate Stand to Fit Full Size Crates, Black Powder Coated Rubberwood	1 ea / 4 ea



Do not submerge in water, wipe with a damp cloth and dry immediately



Legs stay in place when in use, collapse down to store flat

# TWO-TIERED DISPLAY STANDS

Display and merchandise your baked goods, fruits, or grab & go prepackaged foods with elegant style. Mixed materials offer a neutral yet modern presentation. Fits in well with our existing Industrial Collection™ as well as our range of Acacia Crates, Paddles and more!

- Black Powder Coated Steel, Acacia Wood
- Collapsible design
- Light assembly required; assembly instructions included

Item #	Description	Min Order/ Case Pack
<b>TWO-TIERED DISPLAY STAND, ACACIA &amp; BLACK POWDER COATED METAL</b>		
c. 10718	Rectangular, 17 $\frac{1}{2}$ x 8 x 18"	1 ea / 2 ea
d. 10719	Round, 11 $\frac{3}{4}$ x 11 $\frac{3}{4}$ x 15"	1 ea / 4 ea



Do not submerge in water, wipe with a damp cloth and dry immediately

Beautiful Acacia wood grain and black coated steel give these stands their rustic modern appeal—each piece will display unique variations in knots, grain

c



d





# TWO-TIERED CRATE

## FRAME RISER

- Perfect for breakfast buffets, grab-and-go stations or merchandising
- Removable chalkboard panel to customize presentation
- Features adjustable shelves so you can display flat or on an angle
- Ships flat. Lock & channel design for quick, easy assembly



Item #	Description	Min Order/ Case Pack
<b>BLACK POWDER COATED STEEL</b>		
a. 11000	21½ x 13½ x 22¼	1 ea



Each tier of this riser display is designed to fit: (1 ea) Full, (2 ea) Half, (3 ea) Third or (4 ea) Fourth Size Wood Crates featured in catalog.

a



11000 Two-Tiered Riser Frame with:  
(1 ea) CW60100 Full Size Cooling Plate  
(1 ea) CRATE11W Full Size Crate  
Crates sold separately  
\*Food pan not included



11000 Two-Tiered Riser Frame with:  
(1 ea) MG1WM Frostone White Marble Tray  
(1 ea) CRATESB11 Full Size Crate  
Crates sold separately  
\*Food pan not included



11000 Two-Tiered Riser Frame with:  
(1 ea) CRATE114BK Full Size Crate  
(1 ea) CRATE11BK Full Size Crate  
Crates sold separately  
\*Food pan not included

Chalkboard sign can be removed for more space saving display options.



11000 Two-Tiered Riser Frame with:  
(2 ea) CRATE12 Half Size Crate  
(2 ea) CRATE124 Half Size Crate

# REVERSIBLE

## FRAME RISERS

- Trapezoidal shape to fit a range of existing items\*
- Frames feature non-slip pads on all sides to keep your bowl or tray securely on top and keep base securely on surface



Item	Description	Min Order/ Case Pack
<b>STAINLESS STEEL</b>		
21000	Full Size, Short, 20¾ x 12¾ x 3⅞"	1 ea / 8 ea
21001	Full Size, Tall, 20¾ x 12¾ x 7¼"	1 ea / 4 ea
b. 21002	Half Size, Short, 12¾ x 10½ x 3⅞"	1 ea / 12 ea
21003	Half Size, Tall, 12¾ x 10½ x 7¼"	1 ea / 6 ea
c. 21004	Third Size, Short, 12¾ x 6⅞ x 3⅞"	1 ea / 18 ea
21005	Third Size, Tall, 12¾ x 6⅞ x 7¼"	1 ea / 12 ea
21006	Half Long, Short, 20½ x 6⅞ x 4⅞"	1 ea / 12 ea
21007	Half Long, Tall, 20½ x 6⅞ x 7¼"	1 ea / 6 ea



b



c

Can be used with our melamine trays (b) MGL2 Frostone Black Slate, or our display crates (c) CRATE12, see catalog for comprehensive offering.

### \*Crate / Tray to Riser Cross Reference:

Riser	Fits
21000/21001	MG1(DW & WM), M4033_ , SS4033, CRATE11(BK), (W), (SB), (SBBK)
21002/21003	MG2(DW & WM), M4005_ , SS4005, CRATE12(BK), (W), (SB), (SBBK)
21004/21005	MG3(DW & WM), M4027_ , SS4027, CRATE13(BK), (W), (SB), (SBBK)
21006/21007	MGL2(DW & WM), M4017_ , SS4017

# CRATE RISERS

Our crate risers bring height and attraction to your displays. Each crate style features one chalkboard panel for custom labeling and decorating. Crates nest together for storage when not in use.



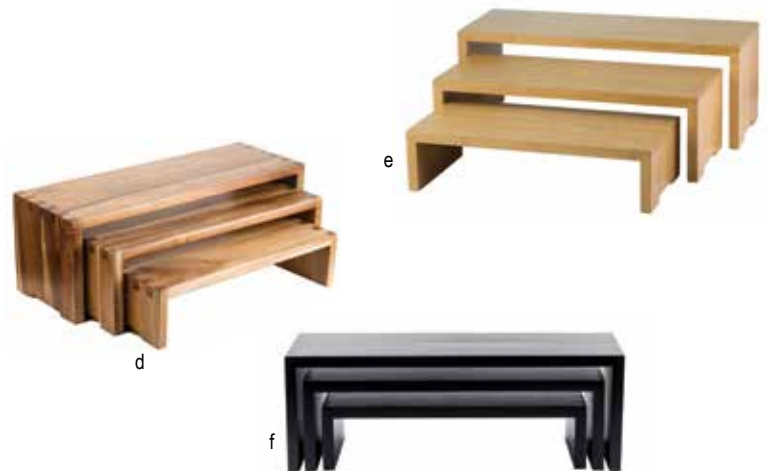
Looking to build a unique and versatile grab-n-go station, organize supplies, or stylish storage system? Our crate risers are a great alternative to the everyday shelving unit. And when it's time for a new look or location, the 3-in-1 sets nest together for easy storage.



Item #	Description	Min Order/ Case Pack
<b>ACACIA, NATURAL &amp; DISTRESSED FIRWOOD</b>		
a.	HFCSET3 Farmhouse™ Acacia Set, Small 15 x 10 x 7 <sup>7</sup> / <sub>8</sub> ", Medium 16 <sup>7</sup> / <sub>8</sub> x 11 <sup>3</sup> / <sub>4</sub> x 9 <sup>1</sup> / <sub>4</sub> ", Large 19 <sup>1</sup> / <sub>4</sub> x 13 <sup>1</sup> / <sub>2</sub> x 10 <sup>1</sup> / <sub>2</sub> "	1 set
b.	RCBCRATE1 Natural Wood Set, Small 15 x 10 x 7 <sup>7</sup> / <sub>8</sub> ", Medium 16 <sup>7</sup> / <sub>8</sub> x 11 <sup>3</sup> / <sub>4</sub> x 9 <sup>1</sup> / <sub>4</sub> ", Large 19 <sup>1</sup> / <sub>4</sub> x 13 <sup>1</sup> / <sub>2</sub> x 10 <sup>1</sup> / <sub>2</sub> "	1 set
c.	RCBCRATE2 Distressed Wood Set, Small 12 <sup>5</sup> / <sub>8</sub> x 8 <sup>1</sup> / <sub>4</sub> x 6", Medium 14 <sup>1</sup> / <sub>2</sub> x 9 <sup>7</sup> / <sub>8</sub> x 6 <sup>3</sup> / <sub>8</sub> ", Large 16 <sup>1</sup> / <sub>2</sub> x 11 <sup>3</sup> / <sub>4</sub> x 7 <sup>1</sup> / <sub>2</sub> "	1 set

# CASCADE RISERS™

- Versatile and attractive buffet solution
- Can be nested together or fanned apart
- Set of 3: Small (17<sup>1</sup>/<sub>4</sub> x 7<sup>7</sup>/<sub>8</sub> x 4<sup>1</sup>/<sub>4</sub>), Medium (19<sup>5</sup>/<sub>8</sub> x 7<sup>7</sup>/<sub>8</sub> x 6<sup>1</sup>/<sub>8</sub>), Large (22 x 7<sup>7</sup>/<sub>8</sub> x 7<sup>7</sup>/<sub>8</sub>)



Item #	Description	Min Order/ Case Pack
<b>ACACIA, BAMBOO &amp; BLACK PAINTED WOOD</b>		
d.	RACA300 Acacia	1 set
e.	RBAM300 Bamboo	1 set
f.	RBK300 Black Painted Wood	1 set



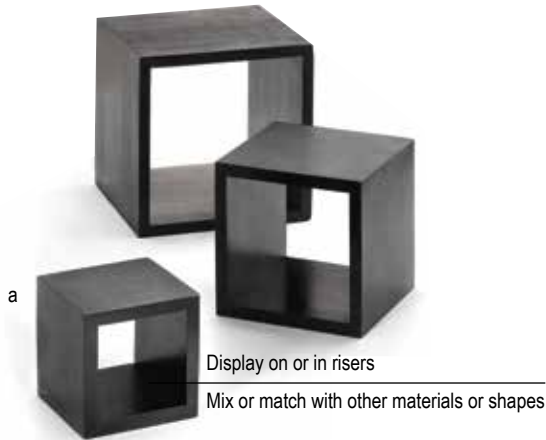
# NON-SLIP RISERS



Our riser collections can play a supporting role in any buffet line catering event or tablescape with ease and versatility.

Item #	Description	Min Order/ Case Pack
<b>CHROME PLATED OR BLACK POWDER COATED</b>		
a. CR3	3-Pc Set, Chrome Plated 6 x 6 x 2", 6 x 6 x 3", 6 x 6 x 4"	1 set / 8 sets
b. BKR4	4-Pc Set, Black 7 x 6 x 2", 7 x 6 x 3", 7 x 6 x 4", 7 x 6 x 6"	1 set / 6 sets





## BARCLAY RISERS™

- Set of three risers nest together for easy storage



Item #	Description	Min Order/ Case Pack
<b>SQUARE-WOOD, BRUSHED STAINLESS STEEL OR BAMBOO</b>		
a. WBK3	3-Pc Set, Black, Wood Set Includes: 5", 7" & 9"	1 set / 2 sets
b. WBAM3	3-Pc. Set, Bamboo Set Includes: 5", 7" & 9"	1 set / 2 sets
c. RS3	3-Pc Set, Brushed S/S Set Includes: 5", 7" & 9"	1 set / 2 sets



## NESTING RISERS

- Multi-purpose design—can be used as a base for a bowl or to elevate your dishes
- Set of three graduated-size risers nest together for easy storage



Item #	Description	Min Order/ Case Pack
<b>BRUSHED STAINLESS STEEL</b>		
d. RR3	Set Includes: 8" dia x 9" h, 7" dia x 6" h, 6 dia x 3" h	1 set / 2 sets

# CAKE SETS

## STANDS & COVERS

- Stainless Steel and melamine stands and cake plates
- Polystyrene covers



Item #	Description	Min Order/ Case Pack
<b>CAKE SETS</b>		
a.	821422 Cake Stand / Cover Set, 12¾" x 13¾" h	1 ea
b.	*H820P422 Cake Plate / Cover Set, 13" x 8" h	1 ea
	*H821422 Cake Stand / Cover Set, 12¾" x 13¾" h	2 ea
<b>STANDS &amp; COVERS</b>		
c.	821 Assembled Stand, 12¾" dia x 6¾" h	1 ea / 6 ea
	821U Unassembled Stand, 12¾" dia x 6¾" h	1 ea / 6 ea
d.	422 Metal Handle Cover, 12" dia x 7½" h	6 ea
e.	422A Assembled Metal Handle Cover, 12" dia x 7½" h	6 ea
f.	H820P Low Profile Cake Plate, 13" dia x ½" h	1 ea / 12 ea
g.	421 Plastic Handle Cover, 12" dia x 7½" h	6 ea
<b>CAKE DOME, SAN PLASTIC</b>		
h.	PCD1 Cake Dome, 12" dia x 5¾" h	1 ea / 6 ea
<b>REPLACEMENT PARTS</b>		
	821UCB Wing Nut and Screw for 821U & 821U	1 ea
	422H Handles For 422 Cake Covers	12 ea / 6 ea

Select cake domes fit channel on Frostone Slate tray (MGC13)see catalog for more details



# NUMBER

## SIGNS

- Numbers printed on both sides



a



b



c

Item #	Description	Min Order/ Case Pack
<b>STAINLESS STEEL OR PLASTIC</b>		
a. N150	4" Numbers 1-50, Stainless Steel	1 set / 4 sets
TN100	4" Numbers 1-100, Plastic	1 set / 50 sets

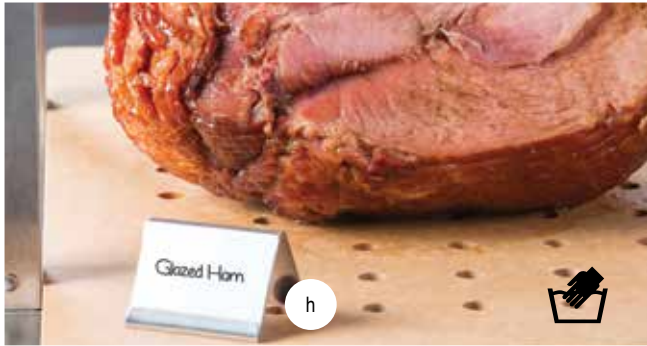
# NUMBER

## TENTS

- Numbers on both sides
- TC125 and TC150 are also an oven safe solution for marking pizzas



Item #	Description	Min Order/ Case Pack
<b>STAINLESS STEEL</b>		
b. TC125	Cut-Out Tents 1-25, 2½ x 2"	1 set / 8 sets
TC150	Cut-Out Tents 1-50, 2½ x 2½"	1 set / 4 sets
c. T150	Numbers 1-50, 2½ x 2"	1 set / 4 sets



h



B17 design includes lip to hold customized cards (cards not included)



d

e

f

g

# BUFFET

## TENTS

- Color-code your buffet for allergen, vegetarian and vegan identification and more

Item #	Description	Min Order/ Case Pack
<b>STAINLESS STEEL</b>		
d. B1	Coffee, 2½ x 2"	1 ea / 25 ea
e. B2	Decaf, 2½ x 2"	1 ea / 25 ea
f. B6	Cream, 2½ x 2"	1 ea / 25 ea
g. B5	Milk, 2½ x 2"	1 ea / 25 ea
B7	Hot Water, 2½ x 2"	1 ea / 25 ea
h. B17	Card Holder, 2½ x 1¼"	1 ea / 200 ea
<b>MELAMINE</b>		
i. M10BK	Black, 3½ x 2½ x 2"	1 ea / 12 ea
j. M10GN	Green, 3½ x 2½ x 2"	1 ea / 12 ea
k. M10W	White, 3½ x 2½ x 2"	1 ea / 12 ea
<b>PORCELAIN</b>		
l. P16	Plain, 3½ x 2"	1 ea / 6 ea



i

j

i

k



Melamine tents are square on one side and curved on the other. Flip them over to customize the look of your display.



For use with our chalkboard (CBP2WH) or dry erase pens.





# MAGNETIC CARD SIGN HOLDERS



Item #	Description	Min Order/ Case Pack
<b>ACRYLIC</b>		
a. A362	Rectangular, 4 x 1¼ x 2½"	1 ea / 12 ea
ACHS46	Slanted Rectangular, 3⅞ x 6 x 1½"	1 ea / 12 ea



a

# CURVED MENU HOLDERS



Ideal for displaying menus and policies with less patron contact

Item #	Description	Min Order/ Case Pack
<b>ACRYLIC</b>		
b. AS57	5½ x 8½ x 4" (Fits a 5½ x 8½ Sheet)	1 ea / 24 ea
c. AS811	11¼ x 8½ x 4½" (Fits a 8½ x 11 Sheet)	1 ea / 12 ea
d. AS46	4 x 4½ x 7" (Fits a 4 x 6" Sheet)	1 ea / 24 ea



b

c

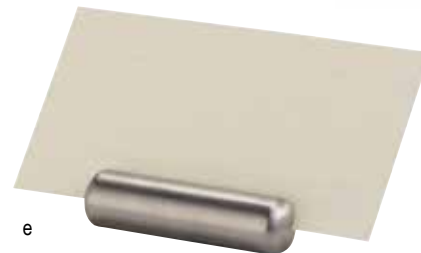


d

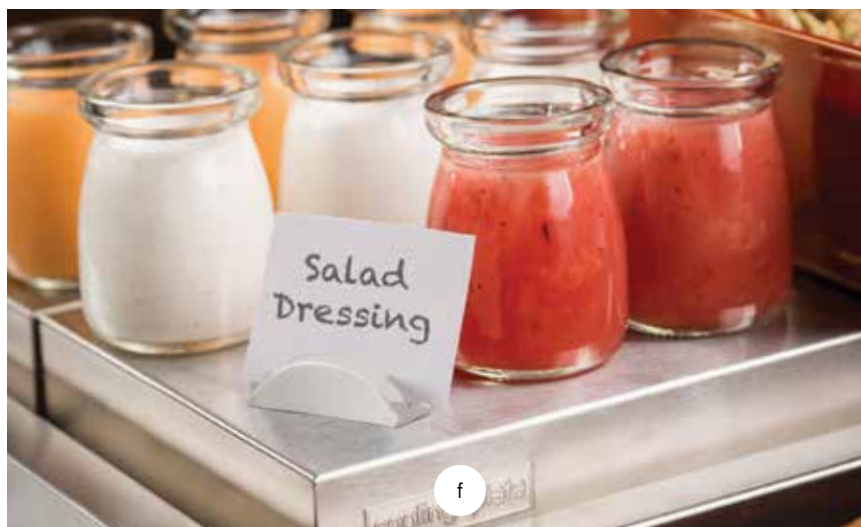
# STAINLESS STEEL CARD HOLDERS



Item #	Description	Min Order/ Case Pack
<b>STAINLESS STEEL</b>		
e. 795	Bullet Card Holder, 2 x ½"	1 ea / 100 ea
f. RCH21	Card Holder, 2 x 1¼"	1 ea / 6 ea
RCH41	Card Holder, 4 x 1"	1 ea / 6 ea
g. RCW41	Wavy Card Holder, 3⅞ x 1½ x ¾"	1 ea / 6 ea



e



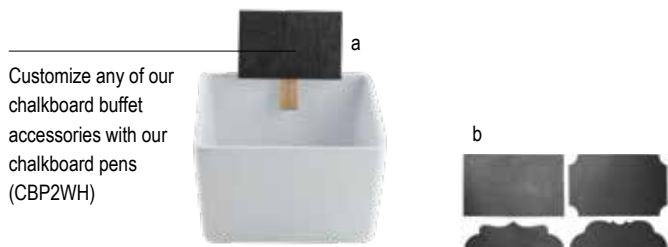
f



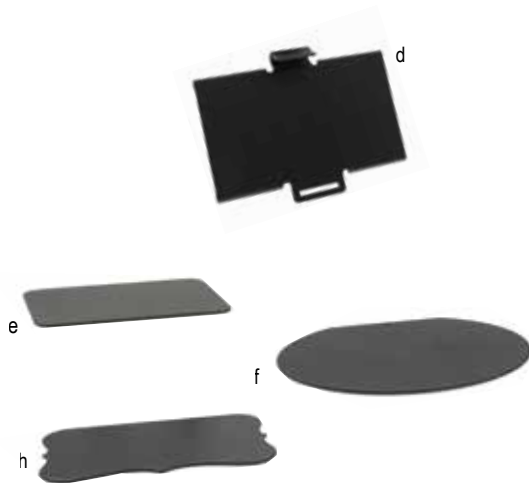
f



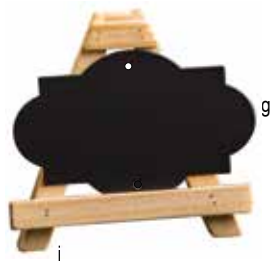
g



Customize any of our chalkboard buffet accessories with our chalkboard pens (CBP2WH)



Convenient Cash & Carry packaging with 6 plaques (one style per pack)



## CHALKBOARD CLIP & LABELS



Item #	Description	Min Order/ Case Pack
<b>CHALKBOARD WITH CLOTHESPIN CLIP</b>		
a.	BAMCBCP 3 x 2½" (6 per pack)	1 pk / 12 pk
<b>CHALKBOARD LABEL</b>		
b.	CBSLA12 Assorted, 48 per pack	1 pk / 12 pk

## BUFFET TAGS



Item #	Description	Min Order/ Case Pack
<b>BUFFET TAGS</b>		
c.	CBTSS3 Stainless Steel Tag with Chalkboard, 3 x 1¾" (6 per pack) Chalk Not Included	1 pk / 12 pk
d.	40001 Hanging Buffet Tag / Card Holder, Black Powder Coated, 3¾ x 2¾ x ½"	1 ea / 12 ea

## BUFFET PLAQUES, EASELS & CARD HOLDERS

- Bring a charming vintage feel to your buffet with these easy-to-use easels and plaques
- Small easels fit with your choice of shaped chalkboards
- Easels also fit standard 3½ x 2" cards for additional labeling options



Item #	Description	Min Order/ Case Pack
<b>CHALKBOARD PLAQUES AND PENS</b>		
e.	12000 Plaque, Rectangle, 3½ x 2", 6 per Pack	1 pk / 12 pk
f.	12001 Plaque, Oval, 3½ x 2", 6 per Pack	1 pk / 12 pk
g.	12002 Plaque, Marquee, 3½ x 2", 6 per Pack	1 pk / 12 pk
h.	12003 Plaque, Decorative, 3½ x 2", 6 per Pack	1 pk / 12 pk
CBP2WH	Chalkboard Pens, White, 2 per Pack	1 pk / 24 pk
<b>BUFFET EASELS—WOOD, POWDER COATED OR ACRYLIC</b>		
i.	12005 Card Holder Easel, Pine Wood, 3½ x 1½ x 3¾", 2 per Pack	1 pk / 12 pk
j.	12004 Card Holder Easel, Black Powder Coated, 3½ x 1½ x 3¾", 2 per Pack	1 pk / 12 pk
k.	12006 Card Holder Easel, Acrylic, 3½ x 3½", 2 per Pack	1 pk / 12 pk



# CARD & NUMBER HOLDERS



Item #	Description	Min Order/ Case Pack
<b>BLACK POWDER COATED METAL</b>		
a.	BKB8 8" Branch	1 ea / 12 ea
b.	BKB12 12" Branch	1 ea / 12 ea
	BK1908 8" Stand with Flat Bottom	1 ea / 12 ea
c.	BK1912 12" Stand with Flat Bottom	1 ea / 12 ea
	BK1915 15" Stand with Flat Bottom	1 ea / 12 ea
	BK1918 18" Stand with Flat Bottom	1 ea / 12 ea
	BKC2202 2" Stand with Clip	1 ea / 12 ea
	BKC2206 6" Stand with Clip	1 ea / 12 ea
d.	BKC2208 8" Stand with Clip	1 ea / 12 ea
	BKC2212 12" Stand with Clip	1 ea / 12 ea
<b>CHROME PLATED METAL, FLAT BOTTOM</b>		
e.	1908 8" Chrome Plated	1 ea / 20 ea
	1912 12" Chrome Plated	1 ea / 20 ea
	1918 18" Chrome Plated	1 ea / 20 ea
<b>STAINLESS STEEL, PLASTIC, NICKEL PLATED, OR BAMBOO</b>		
f.	CH2 3½" Circle Clip, Stainless Steel	1 ea / 12 ea
g.	CHX4 4½" Double-Sided Clip, Steel	1 ea / 12 ea
h.	CHX8 8½" Double-Sided Clip, Steel	1 ea / 12 ea
i.	BFCH4 4" Fork Card Holder, Stainless Steel	12 ea
j.	5CHBAM 5" Square, Bamboo, Metal Clip	12 ea
k.	2504 4" Harp Clip, Stainless Steel	1 ea / 6 ea
	2508 8" Harp Clip, Stainless Steel	1 ea / 6 ea
	2512 12" Harp Clip, Stainless Steel	1 ea / 6 ea
l.	1306 6" Card Holder, Stainless Steel Deluxe	1 ea / 6 ea
m.	596 2" Card Holder, Heavy Nickel Plated	24 ea



Ships from Gurnee, IL 60031

