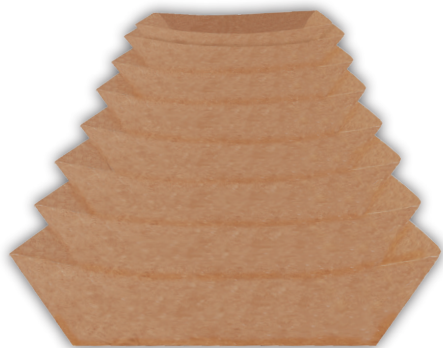




ECO FOOD TRAYS

The Eco food trays are made from all kraft paperboard, which contains at least 18% recycled wood fiber content. Like all of our other food trays, the new Eco trays are highly recyclable and compostable when disposed in proper facilities. The trays have disposal logos printed on the bottom to effectively communicate this with your customer. In addition, Eco Trays are made using a totally chlorine free manufacturing process, which consumes less raw material and water, leaving more of those resources untouched. Clearly, Eco Trays are the natural choice for your foodservice needs and our environment. Contact your sales rep for more information.



FOOD TRAYS - ECO:

Kraft, nested, packed in corrugated

- Recyclable and compostable where facilities exist

Item #	Size	Pack	Weight	Cube
0501	#25 (1/4 lb.)	4 x 250 = 1000	9.00	0.64
0505	#40 (6 oz.)	4 x 250 = 1000	10.00	0.70
0509	#50 (1/2 lb.)	4 x 250 = 1000	10.00	0.76
0513	#100 (1 lb.)	4 x 250 = 1000	14.00	0.93
0517	#200 (2 lb.)	4 x 250 = 1000	20.00	1.33
0521	#250 (2-1/2 lb.)	2 x 250 = 500	12.00	0.90
0525	#300 (3 lb.)	2 x 250 = 500	15.00	1.11
0529	#500 (5 lb.)	2 x 250 = 500	20.00	1.55





Southland™ Red Check



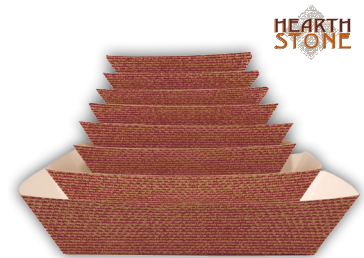
White



Hearthstone Design

FOOD TRAYS

Hot or cold, spicy or sweet, Southern Champion food trays are a great and easy way to serve just about anything! The single-use trays are offered in a wide range of sizes, all of which are microwaveable. In addition, our food trays are recyclable and compostable when disposed in proper facilities.



FOOD TRAYS - SOUTHLAND™ RED CHECK, WHITE, HEARTHSTONE:

1 piece, tray, nested, packed in corrugated

Item #	Item #	Item #	Description	Pack	Weight	Cube	
SOUTHLAND™ - SBS	0401	0550	0560	#25 (1/4 lb.)	4 x 250 = 1000	9.00	0.64
	0405	0551	0561	#40 (6 oz.)	4 x 250 = 1000	10.00	0.70
	0409	0552	0562	#50 (1/2 lb.)	4 x 250 = 1000	10.00	0.76
	0413	0553	0563	#100 (1 lb.)	4 x 250 = 1000	14.00	0.93
	0417	0554	0564	#200 (2 lb.)	4 x 250 = 1000	20.00	1.33
WHITE - SBS	0421	0555	0565	#250 (2-1/2 lb.)	2 x 250 = 500	12.00	0.90
	0425	0556	0566	#300 (3 lb.)	2 x 250 = 500	15.00	1.11
	0429	0557	0567	#500 (5 lb.)	2 x 250 = 500	20.00	1.55
	0433	NA	NA	#1000 (10 lb.)	2 x 125 = 250	14.50	1.41
	HEARTHSTONE - CRB						



FOOD TRAY SLEEVES: CCK, packed in corrugated

• Recyclable and compostable where facilities exist

Item #	Size	Pack	Weight	Cube
070300	sleeve for #300 food trays	250	10.50	0.60
070500	sleeve for #500 food trays	250	13.50	0.77

Pictured here with our Southland™ Red Check trays

