



## Sustainable Cleaning Solutions



[odellcorp.com](http://odellcorp.com)



# THE O'DELL CORPORATION

**At the O'Dell Corporation, we strive to be environmental stewards. Sustainability, conservation and preservation have been our normal practice for many years.**

## CONTENTS

Wet Mops ..... 1

Cleaning Accessories ..... 11

Dust Mops ..... 13

Brooms & Brushes ..... 17

Dusters, Washers, ..... 26  
and Applicators

Microfiber ..... 28

Handles, Squeegees, ..... 42  
and Floor Care Accessories

Options ..... 45



Denotes the EchoLine by O'Dell. Industrial floor care for the environmentally conscious company.



Denotes color flag product.



High quality, recycled plastic that has been collected from coastal areas at risk of ocean plastic pollution.

## Sustainability

Sustainable products are those products that provide environmental, social and economic benefits while protecting public health and environment over their whole life cycle, from the extraction of raw materials until the final disposal.

O'Dell offers several sustainable products, including our Core2 Microfiber System.

**LEED** (Leadership in Energy and Environmental Design) provides a framework to create cost-saving green buildings. A facility can earn LEED credits by creating and implementing a Green Purchasing Policy which requires buying sustainable cleaning products.

Our **Core2 microfiber program** is designed to use less water and chemicals that can help you meet LEED credit needs (under Indoor Environmental Quality Credit 3.1: Green Cleaning - High Performance Cleaning Program).

## Conservation

Our conservation initiatives seek the proper use of nature. Several projects have been implemented that have helped to protect the natural world.

- In 1995, O'Dell established a 1000 acre tree farm certified under Mead Westvaco's CFM program and the Sustainable Forestry Initiative Program
- Our tree farm removes 3,600 tons of CO<sub>2</sub> and produces 4,000 tons of oxygen annually, enough for 16,200 people
- In support of the South Carolina Waterfowl association, in the midst of new pines and hardwoods, O'Dell created wetlands to provide a safe and healthy growth environment for both resident and migratory waterfowl and numerous other species.
- This initiative produced thousands of waterfowl hatches and provided habitat for numerous other species of wildlife
- In addition, we created miles of hiking trails and campsites and sponsor education programs to nurture youth awareness of our environmental responsibilities.

## Preservation

Our preservation initiatives seek to protect nature from abuse. O'Dell was one of the first manufacturing facilities in the industry to recognize the need and implement programs to protect surrounding nature.

- First South Carolina manufacturer to use 100% green power and be registered as a "Green Power Partner" by LEC and by the EPA.
- First company in our industry to be certified as a Carbon Neutral manufacturer by the Cleaning Industry Climate Initiative (CICI), and Leonardo Academy's Cleaner and Greener Program.

*As more forward thinking advancements which address environmental concerns are presented, O'Dell plans to take full advantage of new, sustainable opportunities.*



Certified Carbon Neutral Factory



100% Green Powered Facility

# Wet Mops

## Choosing the proper model

Make the right choice of mop based on your specific job requirement.



### Headband

**Widebands** – may be laundered many times, and used with all handle styles. Standard widebands are made of 5" vinyl coated nylon mesh, for strength and to facilitate speedy drying.

**Narrowbands** – constructed of 1 ¼" polyester tape, they are usually placed on the economical, cut end mopheads. Woven poly headbands are also available in 7, 8, and 9" widths.

### Yarn

Choose Cotton, Rayon, Synthetic, Blended yarn, Microfiber and Microfiber/Synthetic blends, depending on the application (see below).

### Tailband

Tailbands prevent tangling, and extend a mop's functional life. They provide wider floor coverage per pass and less streaking, which equals faster mopping and reduced labor.

### Ends

Looped Ends are more durable and launderable. Cut End mops are lower cost, disposable.

	Blended*	Cotton	Rayon	Knitted Woven Cotton	Microfiber	Hybrid**	Finish
Industry Applications							
	General Maintenance, Health Care	Industrial, Institutional, & Commercial	Industrial, Institutional, & Commercial	Food Service & Clean room	Health Care	General Maintenance	Liquid Applications
Uses	General cleaning and disinfecting, Application of chemicals.	Quick spill pick-up, General cleaning	General cleaning and disinfecting, Application of chemicals.	Great for mopping anti-skid floors	Healthcare color coding to prevent cross contamination, Floor finish application	Healthcare, quick spill pick-up, commercial laundries	Finishing - Great for dispensing chemicals and waxes.
Pros	Highly absorbent, Limited break-in required, Great for laundering, Yarn color choices, Fiber picks up 6-7 times its weight, Durable staple fibers	Highly absorbent, Economical, Good liquid retention	Highly absorbent, Little break-in required, Good release of liquids, Picks up 3-4 times its weight, Mildew resistant, Less linting	Highly absorbent, High tensile strength, Does not lint	Inherent ability to clean without chemicals, Great launderability (200-500 times), Lightweight, Lint-free, holds 7 times its weight in liquid, Releases liquid well	Traditional construction (no need to buy new hardware or handles), Integrated Microfiber picks up more dirt and germs than regular mops, Stronger, longer lasting fibers, Great launderability, Increased absorption and release	Highly absorbent, Little break-in required, Good release of liquids, Picks up 3-4 times weight, Mildew resistant, Less linting
Cons	May shrink when laundered, Higher unit cost	Needs break-in period, Lengthy drying time, Might mildew or degrade	Shrinks when laundered, Little liquid retention	Cut end mops are not launderable	Higher unit cost	Higher unit cost	Shrinks when laundered, Little liquid retention

\*Rayon/Cotton/Polyester, Rayon/Polyester  
\*\*Synthetic fiber integrated with microfiber

### Preshrunk Synthetics

These mopheads are manufactured from yarns created especially for O'Dell. Ideal for use in health care industry, and for other users who launder mops. Pre-laundered and preshrunk. In either 4 ply or 6 ply yarns with 5" vinyl mesh headband.

**900 Series**  

4 ply preshrunk. Cotton, rayon, synthetic blend of fibers for maximum durability. Absorbs up to seven times its own weight!

**5500 Series**  

4 ply preshrunk, premium quality, synthetic mophead for healthcare applications. Pre-laundered with limited break in.



### Blended

**400 Series**  

4 ply all purpose. Premium, open end spun cotton/rayon/synthetic yarn for strength and durability. Available in all colors. Launderable.

**4000 Series**  

4 ply all purpose cotton synthetic blend loop mop. This fiber blend offers a quality yarn at a modest price. Available in all colors. Launder with care.



### Healthcare

Healthcare synthetics contain the same superior quality yarns as our preshrunk mopheads. This ensures both durability and absorbency. 4 ply blended yarn combines the strengths of rayon, acrylic and polyester-tensile strength, absorption and rapid fluid release. The yarn dries quickly which reduces odor and bacterial growth.

**5000 Series**  

4 ply, premium quality, synthetic blend mophead for healthcare applications. Launderable.



ITEM NO.					SIZE	HEADBAND	CASE PACK	CASE CUBE	WEIGHT LBS	STANDARD YARN COLOR
900S	5500S	400S	4000S	5000S	Small	Yellow 5" mesh	12	0.98	10.0	  
900M	5500M	400M	4000M	5000M	Medium	Green 5" mesh	12	1.45	13.5	  
900L	5500L	400L	4000L	5000L	Large	Red 5" mesh	12	1.67	18.0	
900XL	5500XL	400XL	4000XL	5000XL	Extra large	Blue 5" mesh	12	2.22	22.5	<i>Unless otherwise noted</i>

Add the desired color to end of item number: Ex: 5500L/Blue

## Echo Mop

### 1200 Series

These mops are produced using high quality P.E.T fibers from recycled bottles. Absorbs over 4.4 times its weight in water. Releases almost 30% upon wringing. Over 20% better performance than competitive all-synthetic wet mop yarns. Dries fast. Much longer lasting and lower linting than competitive yarns. Composed of 30% post consumer material and 67% post industrial material. Free from post recycling dyes.

ITEM NO.	SIZE	CASE PACK	CASE CUBE	WEIGHT LBS
1200S	Small	12	0.98	10
1200M	Medium	12	1.45	13.5
1200L	Large	12	1.67	18
1200XL	Extra Large	12	2.22	22.5

Available Colors



Water Bottle Blue



Soda Bottle Green



Made of Earthspun® yarn for eco-friendly cleaning

Yarn colors are derived from original dyes of recycled P.E.T. plastic

Yarn color example: 1200L/Blue

## Cotton

### 100 Series

4 ply looped-end mophead. High quality at a modest price. Good for heavy cleaning. Tighter twist yarns for strength and longer life. Natural color cotton.

### 500 Series

An economical 4 ply cotton looped-end mophead. The perfect choice when switching from cut-end to looped end. Out performs cut-end mops for general purpose cleaning. Available in natural color cotton.

ITEM NO.	SIZE	HEADBAND	CASE PACK	CASE CUBE	WEIGHT LBS	
100S	500S	Small	Yellow 5" mesh	12	0.98	10
100M	500M	Medium	Green 5" mesh	12	1.45	13.5
100L	500L	Large	Red 5" mesh	12	1.67	18
100XL	500XL	Extra Large	Blue 5" mesh	12	2.22	22.5

Not pre-shrunk. Launder with care.



## Rayon

### 200 Series

4 ply rayon looped-end mophead suitable for heavy cleaning and finish work. Needs no break in. Can absorb 4 times its own weight. Available in natural white only.

ITEM NO.	SIZE	HEADBAND	CASE PACK	CASE CUBE	WEIGHT LBS
200S	Small	Yellow 5" mesh	12	0.98	10
200M	Medium	Green 5" mesh	12	1.45	13.5
200L	Large	Red 5" mesh	12	1.67	18
200XL	Extra Large	Blue 5" mesh	12	2.22	22.5

Not pre-shrunk. Launder with care.





## Knitted and Non-woven



### Knitty Gritty for Food Service

This poly cotton blended knit mop was designed to meet the tough, demanding needs of the industrial service industries. This innovative mophead will stand up well to rough, abrasive anti skid floors. The finest quality blended cotton and polyester fibers are knitted tightly to create a longer lasting, lower linting product with enhanced water holding ability for greater coverage of large floor surface areas. The Knitty Gritty mophead has become widely accepted in food service companies throughout the United States.

ITEM NO.	SIZE	HEADBAND	CASE PACK	CASE CUBE	WEIGHT LBS
KG102TB	Med.	1¼" polyester tape	12	1.59	13.5
KG102TBWB	Med.	Green 5" mesh	12	1.59	13.5

### Enviro Clean for Clean Room

This nonwoven material is designed to meet the various levels of cleanroom (Class 1000) applications for lint reduction. It is also ideal for food service environments requiring mildew proof cleaning products. Also hospitals controlling infectious disease, oil and hazardous chemical spills.

The unique synthetic web strand construction combines the strength and wearability of non-woven polyester and nylon fibers. Liquid and particulate pickup and retention are enhanced by the nonwoven orientation of the fibers. Linting and shredding are virtually nonexistent. These unique fibers are mildew resistant and fast drying. Available in both cut-end and looped-end.



LOOPED END	CUT END	SIZE	HEADBAND	CASE PACK	CASE CUBE	WEIGHT LBS
EC910L	EC310	Med.	1¼" polyester tape	12	1.09	8
EC911L	EC314	Large	1¼" polyester tape	12	1.59	11
EC912L	EC316	XL	1¼" polyester tape	12	1.85	12
EC910LWB	EC310WB	Med.	Green 5" mesh	12	1.09	8
EC911LWB	EC314WB	Large	Red 5" mesh	12	1.59	11
EC912LWB	EC316WB	XL	Blue 5" mesh	12	1.85	12

### New Edge Nonwoven Wet Mop

Produced from 100% post industrial material - the new Edge Mop is made from recycled rayon / synthetic nonwoven edge trim. Compared to cotton, this material exhibits 70% greater absorption and 68% greater liquid release, giving the same cleaning results with less yarn fiber. The Edge mop is more economical than cotton, will not unravel, leaves less lint, and requires no break-in time. The Edge mop is ideal for wax stripping, disinfecting, quick spill pick-up, and general purpose cleaning.

- › 70% greater absorption than cotton
- › 68% greater liquid release
- › More economical than cotton
- › Reduced linting
- › Immediate absorption
- › 100% post - industrial nonwoven edge trim
- › Made in the USA



Looped end



Cut end

#### Cut end

ITEM NO.	SIZE	CASE PACK	CASE CUBE	WEIGHT LBS
BW612	#12	12	1.09	5
BW714	#14	12	1.09	5.75
BW816	#16	12	1.59	6.5
BW918	#18	12	1.59	7.25
BW1020	#20	12	1.59	8
BW1224	#24	12	1.59	9.5
BW1632	#32	12	2.37	12.5

#### Looped end

ITEM NO.	SIZE	CASE PACK	CASE CUBE	WEIGHT LBS
BW306	Small, 12 oz. equivalent	12	1.09	5
BW308	Medium, 16 oz. equivalent	12	1.59	6.5
BW312	Large, 24 oz. equivalent	12	1.59	9.5
BW316	X-Large, 32 oz. equivalent	12	2.37	12.5



Cotton mop on non-skid floor

vs.

Edge mop on non-skid floor

## Cotton

Our most economical line of mopheads. Suitable for a wide range of cleaning jobs. Available in both 4 ply and 8 ply cotton with either narrow bands or wide bands. Cotton mopheads require break-in time to remove natural oils from the fibers.

**Economy 8-ply** - 8 ply yarns provide good absorption for general use mopping.

1.25" POLY TAPE HEADBAND	5" MESH HANDBAND	SIZE	CASE PACK	CASE CUBE	WEIGHT LBS
838F	838FWB	8 oz.	12	0.76	6
8310F	8310FWB	10 oz.	12	0.76	7
8312F	8312FWB	12 oz.	12	1.09	9
8316F	8316FWB	16 oz.	12	1.59	12
8320F	8320FWB	20 oz.	12	1.59	15
8324F	8324FWB	24 oz.	12	1.59	18
8332F	8332FWB	32 oz.	12	2.37	24

**Economy 4-ply** - A great value at a modest price. A very popular cotton cut end product.

1.25" POLY TAPE HEADBAND	5" MESH HANDBAND	SIZE	CASE PACK	CASE CUBE	WEIGHT LBS
538F	538FWB	8 oz.	12	0.76	6
5310F	5310FWB	10 oz.	12	0.76	7
5312F	5312FWB	12 oz.	12	1.09	9
5316F	5316FWB	16 oz.	12	1.59	12
5320F	5320FWB	20 oz.	12	1.59	15
5324F	5324FWB	24 oz.	12	1.59	18
5332F	5332FWB	32 oz.	12	2.37	24



## Rayon

Rayon provides immediate absorbency and extra wear. Low linting and needs no break in time. Ideal for general cleaning and disinfecting.

**Economy 4-ply** - A great value rayon mophead at a modest price.

1.25" POLY TAPE HEADBAND	5" MESH HANDBAND	SIZE	CASE PACK	CASE CUBE	WEIGHT LBS
2110F	2110FWB	10 oz.	12	0.76	7
2112F	2112FWB	12 oz.	12	0.76	9
2116F	2116FWB	16 oz.	12	1.09	12
2120F	2120FWB	20 oz.	12	1.59	15
2124F	2124FWB	24 oz.	12	1.59	18
2132F	2132FWB	32 oz.	12	1.85	24

**Premium 4-ply** - The industry standard for rayon cut end mop heads.

1.25" POLY TAPE HEADBAND	5" MESH HANDBAND	SIZE	CASE PACK	CASE CUBE	WEIGHT LBS
238F	238FWB	8 oz.	12	0.76	6
2310F	2310FWB	10 oz.	12	0.76	7
2312F	2312FWB	12 oz.	12	0.76	9
2316F	2316FWB	16 oz.	12	1.09	12
2320F	2320FWB	20 oz.	12	1.59	15
2324F	2324FWB	24 oz.	12	1.59	18
2332F	2332FWB	32 oz.	12	1.85	24

**Best 8-ply** - A luxuriously thick, thirsty rayon mophead that will withstand rough use.

1.25" POLY TAPE HEADBAND	5" MESH HANDBAND	SIZE	CASE PACK	CASE CUBE	WEIGHT LBS
288F	288FWB	8 oz.	12	0.76	6
2810F	2810FWB	10 oz.	12	0.76	7
2812F	2812FWB	12 oz.	12	0.76	9
2816F	2816FWB	16 oz.	12	1.09	12
2820F	2820FWB	20 oz.	12	1.59	15
2824F	2824FWB	24 oz.	12	1.59	18
2832F	2832FWB	32 oz.	12	1.85	24





### Rayon and Cotton Numbered

Standard numbered mopheads are lighter than full weight mopheads.

**Rayon 4-ply** Rayon provides immediate absorbency and extra wear. Low linting and needs no break in. Ideal for general cleaning and disinfecting.

**Cotton 4-ply** A great value and high quality at a modest price. 4 ply cut end cotton mophead. Good for heavy cleaning. Tighter twist yarns for strength and longer life.

RAYON 4-PLY	COTTON 4-PLY	SIZE	CASE PACK	CASE CUBE	WEIGHT LBS
2312	5312	#12	12	0.76	9
2316	5316	#16	12	1.09	10
2320	5320	#20	12	1.59	12
2324	5324	#24	12	1.59	16
2332	5332	#32	12	1.59	18

### Deck Mop

The "Old Standby" traditional deck mops with permanent handles. These deck mops will stand up to very rough use. Available in 2 yarn variations.

#### Cotton Deck Mop

ITEM NO.	SIZE	DIAMETER	HANDLE	CASE PACK	CASE CUBE	WEIGHT LBS
5716	16	7/8"	48"	6	0.85	9
5720	20	1 1/8"	54"	6	1.15	12
5724	24	1 1/8"	54"	6	1.68	15
5732	32	1 1/8"	54"	6	2.88	17

#### Rayon Deck Mop

ITEM NO.	SIZE	DIAMETER	HANDLE	CASE PACK	CASE CUBE	WEIGHT LBS
2716	16	7/8"	48"	6	0.85	9
2720	20	1 1/8"	54"	6	1.15	12
2724	24	1 1/8"	54"	6	1.68	15
2732	32	1 1/8"	54"	6	2.88	17



## Hygrade Rayon

**700 Series** Hygrade 4 ply rayon yarn with blue stripes to designate mophead is for finish applications. Rayon absorbs moisture well, has good release, and is ideal as a finish mop. Less lint, longer lasting, and faster drying. Excellent for waxing.

ITEM NO.	SIZE	HEADBAND	CASE PACK	CASE CUBE	WEIGHT LBS
700S	Small	1¼" polyester tape	12	1.09	10
700M	Medium	1¼" polyester tape	12	1.59	13.5
700L	Large	1¼" polyester tape	12	1.85	18
700XL	Extra large	1¼" polyester tape	12	2.37	22.5

## Nylon

**99 Series** This 100% nylon finish mop holds liquid wax suspended by surface tension, not within its fibers. This smooth applicator glides along surfaces and releases finishes rapidly and completely with a lint-free shine.

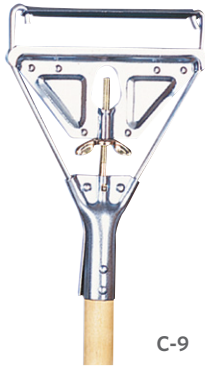
ITEM NO.	SIZE	HEADBAND	CASE PACK	CASE CUBE	WEIGHT LBS
991S	Small	1¼" polyester tape	12	1.09	7.5
992M	Medium	1¼" polyester tape	12	1.59	15
993L	Large	1¼" polyester tape	12	1.85	18
994XL	Extra large	1¼" polyester tape	12	2.37	24

## Nylon Flat

The mesh back construction and nylon yarn used in these finish mops allows for rapid, lint free release of floor finishes. Nylon yarn glides easily over smooth surfaces to provide streak free results. Keyhole construction with ties.

ITEM NO.	LENGTH	WIDTH	CASE PACK	CASE CUBE	WEIGHT LBS
FMN185	18"	5"	12	1.09	13
FMN245	24"	5"	12	1.59	16





C-9

## Metal Quick Change

Heavy duty plated metal and a metal wing nut characterize this popular style of mop handle. Swing away bar facilitates fast mophead changes. Recommended for narrow band mopheads.

ITEM NO.	DESCRIPTION	DIA./SIZE INCHES	OVERALL LENGTH INCHES	HANDLE	CASE PACK	CASE CUBE	WEIGHT LBS
C-9	Janitor Quick Change	1½ x 54	61½	Pine	12	2.86	27
C-960	Janitor Quick Change	1½ x 60	67½	Pine	12	3.14	29
C-7QC	Junior Quick Change	1 x 54	61½	Pine	12	1.21	15.5

## Plastic Quick Change

Features a durable polypropylene molded head for corrosion resistance, while a thumbwheel and side gate facilitate fast and easy changes. Wide head accommodates any size mop. C-8P and C-8P60 are available with red, green, yellow and blue fiberglass handles. Add R, G, Y, or B for color. (ex. C-8PR) Recommended for narrow band mopheads. Also available with an eco-friendly recycled plastic head. Recycled plastic for the quick change head is derived from car battery casings. Available in black only.



C-8P

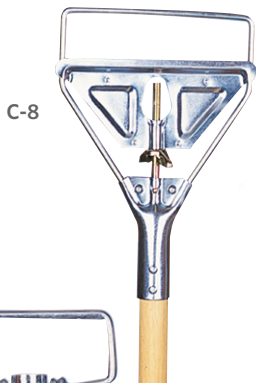
C-8PRP  
100% Recycled plastic

ITEM NO.	DESCRIPTION	DIA./SIZE INCHES	OVERALL LENGTH INCHES	HANDLE	CASE PACK	CASE CUBE	WEIGHT LBS
C-8P	Janitor Plastic Quick Change	1 x 54	61¼	Fiberglass	12	2.86	26
C-8P60	Janitor Plastic Quick Change	1 x 60	67¼	Fiberglass	12	3.14	27
C-8PW	Janitor Plastic Quick Change	1½ x 54	61¼	Pine	12	2.86	26
C-8PM54	Plastic Quick Change	1 x 54	61¼	Metal	12	2.86	16
C-8PM60	Plastic Quick Change	1 x 60	67¼	Metal	12	3.14	17

Add RP to item number for 100% recycled plastic head. (Ex. C-8PPWRP)

## Metal Stirrup

This stirrup has heavy duty plated metal construction to resist corrosion, and a sturdy metal wing nut to prevent slippage. Recommended for narrow band mopheads.

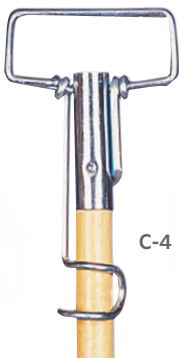


C-8

ITEM NO.	DESCRIPTION	DIA./SIZE INCHES	OVERALL LENGTH INCHES	HANDLE	CASE PACK	CASE CUBE	WEIGHT LBS
C-8	Metal Stirrup Wingnut Clamp	1½ x 54	61½	Pine	12	2.86	26
C-7	Jr. Metal Stirrup Wingnut Clamp	1 x 54	61½	Pine	12	1.21	15

## Gripper

Gripper handles feature a 4" stainless steel plated stirrup that is corrosion resistant. The clamp around the handle uses spring tension to lock into place. The stirrup opens wide, allowing you to change soiled mops without the need to handle them. The Gripper can hold any size mophead, wide band or narrow band.



C-4

ITEM NO.	DESCRIPTION	DIA./SIZE INCHES	OVERALL LENGTH INCHES	HANDLE	CASE PACK	CASE CUBE	WEIGHT LBS
C-4	Gripper	1½ x 60	60½	Hardwood	12	3.14	22

## Jaws Mate

Extra durable jaws style head puts the “bite” on wet mops! Threaded compression collar provides secure grip and allows you to change a soiled mophead without touching it. Recommended for wide band mopheads. C-14 and C-1460 are available with red, green, yellow and blue fiberglass handles. Add R, G, Y, or B for color. (ex. C-14R) Also available with an eco-friendly recycled plastic head. Black recycled plastic for the quick change head is derived from car battery casings. Available in black only.



ITEM NO.	DESCRIPTION	DIA/SIZE INCHES	OVERALL LENGTH INCHES	HANDLE	CASE PACK	CASE CUBE	WEIGHT LBS
C-14PM54	Plastic Jaws	1 x 54	60	Metal	12	2.86	16
C-14PM60	Plastic Jaws	1 x 60	66¼	Metal	12	3.14	17
C-14	Jaws Mate	1 x 54	60	Fiberglass	12	2.86	20
C-1460	Jaws Mate	1 x 60	66¼	Fiberglass	12	2.86	22
C-14W	Jaws Mate	1½ x 54	60	Pine	12	2.86	20

Add RP to item number for 100% recycled plastic head. (Ex. C-14PWRP)

## Heavy Duty Plastic

Heavy duty molded plastic heads are impact and shatter resistant. Quick change and stirrup models feature thumbscrews to make changing mops fast and efficient. The heavy duty blue jaws model features durable hand tightened jaws that can hold the biggest wide band mops. Jaws and Quick Change models available in blue, Stirrup is available in blue and orange.



ITEM NO.	DESCRIPTION	DIA/SIZE INCHES	OVERALL LENGTH INCHES	HANDLE	CASE PACK	CASE CUBE	WEIGHT LBS
HDS60	Blue Stirrup	1 x 60	67	Fiberglass	12	3.14	26
HDJ60	Blue Jaws	1 x 60	66¼	Fiberglass	12	3.14	26
HDS600	Orange Stirrup	1 x 60	67	Fiberglass	12	3.14	26
HDS600W	Orange Stirrup Wood Handle	1 x 60	69½	Pine	12	3.14	26

## Quick Bite

Molded of durable black polypropylene, the Quick Bite is one of our handiest handles! No turn screw is necessary - the trigger release mechanism releases a soiled mop in seconds keeping your hands clean and dry. Quick Bite accommodates most mop heads, and is perfect for finish mops. Made of light weight, corrosion proof plastic which will not scratch floors.



ITEM NO.	DESCRIPTION	DIA/SIZE INCHES	OVERALL LENGTH INCHES	HANDLE	CASE PACK	CASE CUBE	WEIGHT LBS
QB-8P	Quick Bite	1 x 54	56½	Fiberglass	12	2.86	26
QB-8P60	Quick Bite	1 x 60	62½	Fiberglass	12	3.14	27
QB-8PM-54	Quick Bite	1 x 54	56½	Metal	12	2.86	16
QB-8PM-60	Quick Bite	1 x 60	62½	Metal	12	3.14	17

# Cleaning Accessories

## Janitor's Cart

This durable, easy-to-clean cart features 8" wheels and 3" non-marking casters. It has built-in tool holders for cleaning tools, a sturdy yellow vinyl trash bag, and two shelves for cleaning supplies. Some assembly required.

ITEM NO.	DESCRIPTION	CASE PACK	CASE CUBE	WEIGHT LBS
MPC100	Janitor Cart	1	4.405	37



## Mop Bucket

This 35 quart Mop Bucket is made of impact resistant high density polypropylene, with 3" non-marking swivel casters and protective bumpers. Yellow color and "caution" sign printed on sides increase visibility. Taller bucket increases capacity and also allows for better water containment, while the smooth molded construction allows for easy clean-up.

**Side Press and Down Press Wringer** Featuring a corrosion-resistant handle, this wringer can accommodate 12 - 32 oz. mops. Rust-resistant spring provides a long useful life.

ITEM NO.	DESCRIPTION	CASE PACK	CASE CUBE	WEIGHT LBS
MBW35Y-SP	Mop bucket/wringer combo, side press	1	2.67	15.3
MBW35Y-DP	Mop bucket/wringer combo, down press	1	2.67	15.7
MBW35Y	Mop Bucket	1	2.67	10
SP100	Side press wringer	2	1.53	12
DP100	Down press wringer	2	1.53	12



## Safety Sign

Our Safety signs are of high visibility yellow polypropylene, with OSHA mandated print and symbols. Printed in both English and Spanish for effective communication. Molded of lightweight, tough, and durable polypropylene for long service.

**2 Sided Safety Sign** Folds flat for easy storage or can hang easily on janitor cart. Molded two-piece construction, no hinges to break. Snap and lock system.

ITEM NO.	DESCRIPTION	CASE PACK	CASE CUBE	WEIGHT LBS
B-132	24" 2-sided safety sign	6	1.67	10



## Utility Pail

10 quart utility pails have a comfort-grip plastic and a corrosion-resistant wire handle for carrying. Utility pails feature wide pour spouts, and are available in grey, red, yellow, blue, and green (not pictured).

ITEM NO.	DESCRIPTION	CASE PACK	CASE CUBE	WEIGHT LBS
PL10GRY	10 qt. grey pail	12	1.59	5
PLW10G	10 qt. green window sanitizer pail, printed	12	1.59	5
PLS10B	10 qt. blue sanitizer pail, printed	12	1.59	5
PLS10R	10 qt. red sanitizer pail, printed	12	1.59	5
PLS10Y	10 qt. yellow sanitizer pail, printed	12	1.59	5



Utility Pail

## Maid's Caddy

Made of high-impact gray plastic, this maid's caddy fits most janitor carts. It features a handle, three molded compartments for carrying cleaning supplies, and two small item trays. Tough, seamless construction is leak-proof, and resists most chemicals.

ITEM NO.	DESCRIPTION	CASE PACK	CASE CUBE	WEIGHT LBS
PTC-073	Maid's Caddy (handy cleaning basket)	12	0.8	11

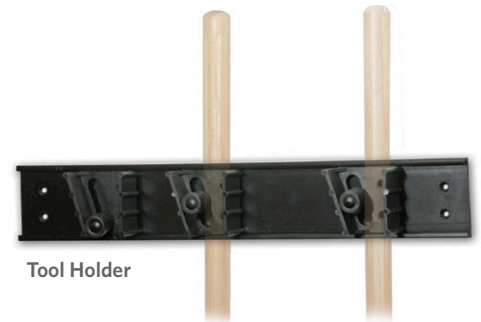


Maid's Caddy

## Tool Holder

This wall mounted 3-position tool holder can hold cleaning tools, gardening tools and sports equipment of varying diameters. Gravity rollers hold the handles in place. Mounting hardware included.

ITEM NO.	DESCRIPTION	CASE PACK	CASE CUBE	WEIGHT LBS
ODLZTH300	3 position tool holder	12	1.03	9.5



Tool Holder

## Laundry Net

Specially designed polyester leno weave mesh bags for laundering mops and pads. Laundering pads in a mesh bag will minimize tangling or contamination. Comes with a slip lock closure and I. D. tag. Available in blue or white.

ITEM NO.	COLOR	SIZE	CASE PACK	CASE CUBE	WEIGHT LBS
L2436W-ID	white	24" x 36"	12	0.84	11
L2436B-ID	blue	24" x 36"	12	0.84	11
L1830W-ID	white	18" x 30"	12	0.84	6
L1830B-ID	blue	18" x 30"	12	0.84	6

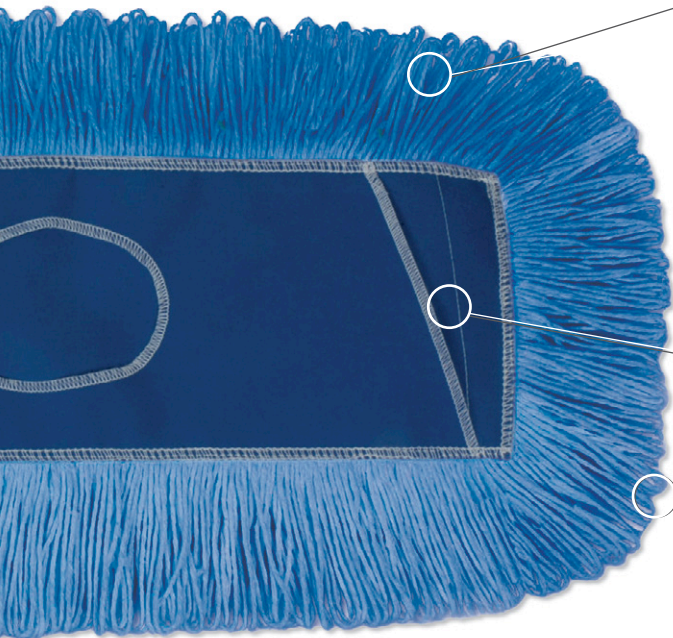
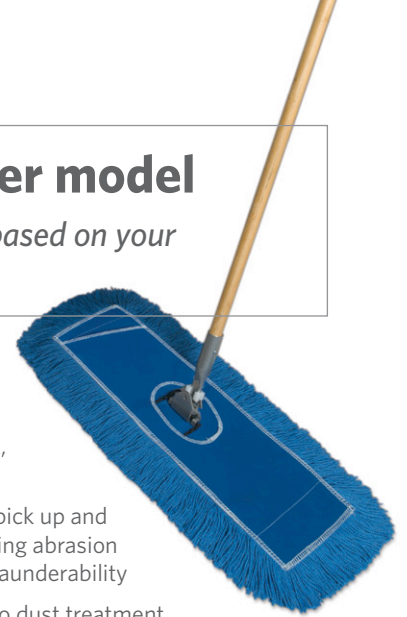


Laundry net

# Dust Mops

## Choosing the proper model

Make the right choice of mop based on your specific job requirement.



### Yarn Types

**Cotton:** Economical, Accepts dust treatment, Picks up large debris

**Synthetic:** No dust treatment needed, Dust pick up and retention through static attraction, Long lasting abrasion resistant fibers, Picks up large debris, Good launderability

**Hybrid Yarn - Microfiber/Synthetic Yarn:** No dust treatment needed, Traditional construction - no need to buy new hardware and handles, Dust pick up and retention through static and tiny microfibers, Long lasting fibers, Great launderability

### Backing

Slot pocket style. Durable polyester backing dries quickly. Available colors: blue, green, yellow, orange, and red. Ex: add code BB to item code for blue back

### Ends

**Cut End:** Low initial cost, Good dust pick up

**Looped End:** Great launderability, reduced tangling, longer life vs. cut end



## Clinger Magnetic Cut End

Synthetic yarns with superior pick up ability. The static charge created when using this product attracts and holds fine dust particles. No treatment is required. Standard slot pocket synthetic backing. A real problem solver. Available in blue. Launderable.

ITEM NO.	LENGTH	WIDTH	CASE PACK	CASE CUBE	WEIGHT LBS
CL185	18"	5"	12	0.98	6.9
CL245	24"	5"	12	1.54	8.7
CL365	36"	5"	12	1.54	12.3
CL485	48"	5"	12	1.93	16.1
CL605	60"	5"	3	2.23	6.4
CL725	72"	5"	3	2.23	7.3

\* For color choice: Add the initial of desired color to the item number. Ex: CL725B

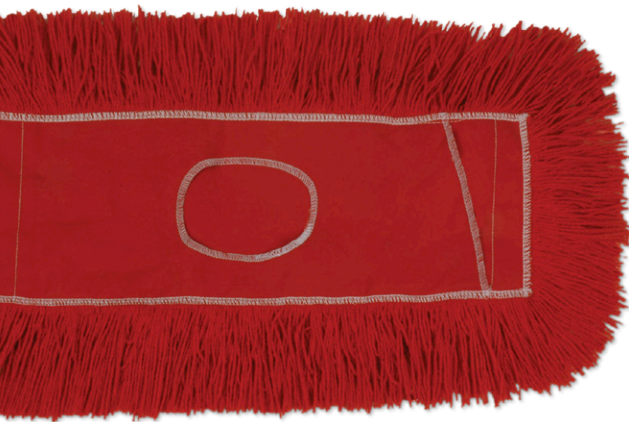


## Hospital Loop

**Hospital Grade Dust Mop Refills** The ideal dust mop for health care use. 4 ply blended yarns. Looped ends reduce linting and provide longer wear. Standard slot pocket construction. Available in blue and natural\*. Launderable.

ITEM NO.	LENGTH	WIDTH	CASE PACK	CASE CUBE	WEIGHT LBS
HL185	18"	5"	12	0.98	8.5
HL245	24"	5"	12	1.54	11.4
HL365	36"	5"	12	1.54	16.5
HL485	48"	5"	12	1.93	21.8
HL605	60"	5"	3	2.23	7.7

\* For color choice: Add the initial of desired color to the item number. Ex: HL725B



## Deluxe Cut End

The special heat-set bonding process of synthetic fibers protect the mop from linting and unraveling. Standard slot pocket construction. Available in red.

ITEM NO.	LENGTH	WIDTH	CASE PACK	CASE CUBE	WEIGHT LBS
D185	18"	5"	12	1.80	15
D245	24"	5"	12	1.80	19.5
D365	36"	5"	12	1.80	28.5
D485	48"	5"	12	2.42	37.9
D605	60"	5"	3	2.42	12.7

\* For color choice: Add the initial of desired color to the item number. Ex: D125B



## JJ Continuous Twist

The perfect mop for maximum dust pickup and longevity. The imbalanced twist in the synthetic blend yarn produces single end loops that provide unmatched dust capturing capacity and durability. The materials and construction used in producing the JJ series offer extended service. The iron man of dust mops. Standard slot pocket construction. Available in blue, red, and white.\* Launderable.

ITEM NO.	LENGTH INCHES	CASE PACK	CASE CUBE	WEIGHT/LBS
JJ185	18	12	1.80	10.0
JJ245	24	12	1.80	12.8
JJ365	36	12	2.42	18.9
JJ485	48	12	2.42	24.4
JJ605	60	3	4.04	8.9

\*For color choice: Add the initial of desired color to the item number.





## Echo Dust Mop

These dust mops are manufactured using recycled PET. Available in cut end or looped end styles to meet the most demanding of dust mopping needs. Standard slot pocket construction.

LOOPED END	CUT END	SIZE	CASE PACK	CASE CUBE	WEIGHT LBS
ECHO185L	ECHO185	5 x 18	12	1.09	11
ECHO245L	ECHO245	5 x 24	12	1.59	13
ECHO365L	ECHO365	5 x 36	12	1.85	17
ECHO485L	ECHO485	5 x 48	12	2.37	28
ECHO605L	ECHO605	5 x 60	3	0.76	9
ECHO725L	ECHO725	5 x 72	3	0.76	12



## Cut End Hygrade Industrial

Cotton cut-end dust mop refill. Sewn 4 ply. Slot pocket construction. Synthetic backing material for faster drying. Available in 5" widths up to 60". Launder with care.

ITEM NO.	LENGTH INCHES	CASE PACK	CASE CUBE	WEIGHT/LBS
M185	18	12	1.80	8.8
M245	24	12	1.80	11.8
M365	36	12	1.80	17.14
M485	48	12	1.80	22.6
M605	60	3	1.80	8.2



## Disposable

A great value in cotton pretreated yarns. Sewn center fringe for added coverage. Natural color in 5" widths.

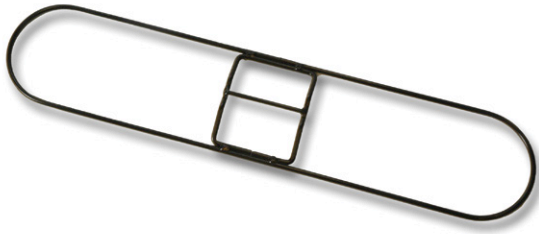
ITEM NO.	LENGTH INCHES	CASE PACK	CASE CUBE	WEIGHT LBS
DM185	18	12	1.09	9
DM245	24	12	1.59	11
DM365	36	12	1.59	15
DM485	48	12	1.85	20
DM605	60	3	0.76	8.25



## Flash 40 Disposable Roll

Flash Forty comes pretreated in a natural color yarn. Slot pocket design backing accepts standard wire frame. Five inch width/ 40 ft. roll packed in a heavy duty carton. Razor included.

ITEM NO.	SIZE	CASE PACK	CASE CUBE	WEIGHT LBS
FF40	40'	1	1.65	16



## Frames and Handles

**Frames** Our frames feature welded one-piece construction and are constructed to meet industry specs. Made of black powder coated metal wire for corrosion resistance. Use with clip-on handles.

ITEM NO.	LENGTH INCHES	CASE PACK	CASE CUBE	WEIGHT/LBS
F125	12	12	0.20	5
F185	18	12	0.29	8
F245	24	12	0.39	9
F305	30	12	0.49	11
F365	36	12	0.58	14
F485	48	12	0.77	18
F605	60	12	0.96	22
F725	72	12	1.15	25

**Clip-On Handles** Spring clip attaches to standard wire dust mop frames. Nylon slide lock may be engaged to hold frame and mop firmly in place or left disengaged to allow for swiveling action.

ITEM NO.	SIZE	HANDLE	CASE PACK	CASE CUBE	WEIGHT LBS
H600	15/16" x 60"	wood	12	1.54	20
H601	1 1/8" x 60"	wood	12	1.54	30
H602	1" x 60"	fiberglass	12	1.54	25
H600M	15/16" x 60"	vinyl coated steel	12	1.54	19



## Triangle Dust Mop

A great dust mop for hard to reach overheads and corners. In cotton cut-end yarns. Frame accepts any standard threaded handle.

ITEM NO.	DESCRIPTION	CASE PACK	CASE CUBE	WEIGHT LBS
TRIR	mop	12	0.76	3
TRIF	frame	12	0.76	1
TRIF-H	frame and handle combo-48"	12	1.07	11

# Brooms & Brushes

## Choosing the proper model

Make the right choice of broom based on your specific job requirement.



### Corn Brooms

#### 100% Corn

Broom Corn or broom straw is actually a form of Sorghum, grown specifically for its ability to trap fine dust particles. Microscopic splits on the tassel's outer walls capture dust, making it "the first microfiber". It is water resistant and wears very well, making it the premium broom fiber. Broom corn goes from seed to harvest in about 3 months. It is environmentally friendly because it grows in dry areas, using only rain water. Nothing is wasted - leftover straw and seeds after harvest are used for animal feed.

#### Corn/fiber

Corn/fiber blended brooms are constructed of broom corn and sotol fibers from the yucca plant. Yucca is a member of the agave or century plant family, which thrives in warm, arid regions. Yucca supplies fibers for rope, mats and basketry. The stiff sotol fibers are used to make the broom's core, which is then wrapped with a layer of broom corn. This makes a strong, economical broom.

#### Poly fiber

Polypropylene fibers give good sweeping performance indoors or outdoors, especially in damp environments. The tough fibers give a long wear life, do not absorb water, and are resistant to most chemicals, detergents, insects, and mildew.

### 100% Corn Brooms

Corn broom is absolutely the best broom fiber for resiliency, strength and wear. Our brooms are bound with double-stitched nylon cord and wire wrapped onto wood handles.

ITEM NO.	DESCRIPTION	OVERALL LENGTH	HANDLE DIA.	CASE PACK	CASE CUBE	WEIGHT LBS
A01001	36 lb. Warehouse Corn/heavy duty/4 sew/wire band	56"	1 1/8"	6	2.51	18
A21001	26 lb. Janitor Corn/5 sew	56"	1 1/8"	6	2.51	13
F11251	Household Black Corn/black handle and fibers/5 sew	56"	1 1/8"	6	2.51	16



F11251

A01001

# CORN BROOMS

## Corn/Fiber Brooms

Economy and performance are hallmarks of these corn/fiber brooms. These durable upright brooms can tackle routine or heavy-duty cleaning jobs.

ITEM NO.	DESCRIPTION	OVERALL LENGTH	HANDLE DIA.	CASE PACK	CASE CUBE	WEIGHT LBS
A03001	36 lb. Warehouse - heavy duty/4 sew/wire band	56"	1 1/8"	6	2.51	18
A12001	32 lb. Warehouse - heavy duty/4 sew/wire band	56"	1 1/8"	6	2.51	16
A20501	30 lb. Janitor/5 sew	56"	1 1/8"	6	2.51	15
A205013W-JB	30lb Jail broom- 56" handle - no metal	56"	1 1/8"	6	2.51	15
B58001	Medium weight/clear lacquered handle/5 sew/ orange stitching	55"	15/16"	12	3.46	22
C00001	Light weight "Zoom Broom"/4 sew	55"	7/8"	12	3.46	20
C00101	Feather weight "Liberty Broom"/4 sew	55"	7/8"	12	3.46	18
D12501	Lobby Broom - 30" clear handle	40"	7/8"	12	1.83	8



D11501

D12501

## Toy Brooms and Whisks

These handy commercial cleaning items may also be used for campers, RVs and boats. O'Dell fine quality in miniature.

ITEM NO.	DESCRIPTION	OVERALL LENGTH	HANDLE DIA.	CASE PACK	CASE CUBE	WEIGHT LBS
D11501	Toy broom with 24" red handle	35"	7/8"	12	1.83	7
D12501	Lobby broom with 34" clear handle	40"	7/8"	12	1.83	8
F10001	Whisk broom	13"	NA	12	0.76	6
LDPB	Lobby broom long wearing plastic fiber. Complimentary item for lobby dust pan	35 1/2"	7/8"	12	2.14	10.4



LDPB



F10001

## Polyfiber Brooms and Angle Brooms

Smooth plastic fibers are washable, durable, and waterproof. Ideal for food preparation areas. Flagged synthetic bristles sweep fine particles as well as large debris. Angle head brooms are designed to reach into the tightest corners with ease.

ITEM NO.	DESCRIPTION	OVERALL LENGTH	HANDLE DIA.	CASE PACK	CASE CUBE	WEIGHT LBS
D13000	Indoor/Outdoor 4 sew	54"	7/8"	12	2.51	20
D13000-BP	Indoor/Outdoor 4 sew- Black Poly	54"	7/8"	12	2.51	20
A12001-BP	Black Poly Warehouse	55"	1 1/8"	6	2.49	16
D12501-BP	Black Poly Lobby broom	39"	7/8"	12	2.19	9.4
C00081	Mini Slant Angle	53"	7/8"	12	2.51	12
F11601	Maxi Slant Angle	53"	7/8"	6	2.51	9.9

## Multibroom

Versatile multi-brooms allow the user to use as an upright or an angled broom, based on need. Available in rugged black polypropylene for heavy sweeping, or flagged blue poly for finer sweeping.

ITEM NO.	DESCRIPTION	OVERALL LENGTH	HANDLE DIA.	CASE PACK	CASE CUBE	WEIGHT LBS
MB-FWH	Flagged Tip Warehouse	54"	7/8"	6	2.51	17
MB-FLS	Flagged Tip Light sweep	51"	7/8"	12	2.51	15
MB-BWH	Black fiber warehouse	54"	7/8"	6	2.51	17
MB-BLS	Black fiber light sweep	51"	7/8"	12	2.51	15
F11602M	Large mono block angle	54"	7/8"	6	2.51	7.75



D13000-BP



D13000



D12501-BP



A12001-BP



MB-BLS



MB-BWH



F11602M



C00081



MB-FLS



MB-FWH



F11601



## Dust Pans

Choose a dust pan from our collection to meet your specific commercial, industrial, or indoor/outdoor needs. All come with hang holes for wall storage.

ITEM NO.	DESCRIPTION	CASE PACK	CASE CUBE	WEIGHT LBS
DP222	Industrial plastic dust pan. Strong, flexible black plastic construction. 12" wide mouth.	12	1.59	5.0
DP200	Clip-on dust pan. Contoured handle fits onto standard broom handles for easy storage and portability. 12" wide mouth.	12	0.89	5.5
DP550	Heavy duty metal dust pan. Durable metal construction for the toughest sweeping jobs. 12" wide mouth.	24	0.89	28.75
LDP1	12" wide mouth high impact lobby dust pan. 30" locking handle enables spill-proof pan carrying and hang-up.	6	2.31	14.0
LDP1-RP	12" wide lobby dust pan produced from post-consumer plastics and recycled tires. 30" locking handle with hang cap. Rear wheels prevent abrasion when dragging.	6	2.31	14.0



## Choosing Brush Fibers



### Nylon

Nylon is a flexible, silky synthetic fiber first used in the 1930s to make toothbrush bristles and women's hosiery. Nylon has a high heat tolerance – it melts instead of burns. It stands up to most acids, alkalis, oil, detergents, and solvents, and is extremely abrasion resistant. Strong enough to be used for seatbelts, nylon resists rot, bugs and mildew. Unlike most polymers, it will absorb water, but does not mat or hold odors. For this reason, it is used in food service.



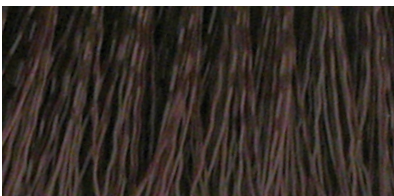
### Palmyra

Palmyra fibers come from the leaf stalks of the Palmyra palm, native to India, Southeast Asia, and Africa. Also called a Sugar palm, Palmyra resembles a tall coconut tree. The leaves are used to make thatching, baskets, and fans, as well as brush bristles. Durable Palmyra is brown in color, has a stiff- to medium-stiff texture, and is resistant to liquids. Economical and tough, Palmyra is ideal as an all-purpose heavy duty sweep for sidewalks, patios, driveways, and general landscape maintenance.



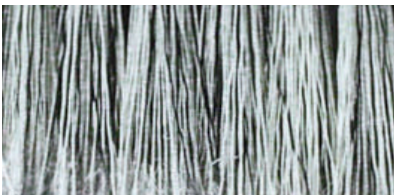
### Palmyra Stalks

Also a product of the Palmyra palm, Palmyra stalks are very coarse, stiff, and strong. It has the appearance of split bamboo or cinnamon bark. Used in its native habitat for fencing, Palmyra stalks are commonly made into street brooms, and used for clearing the heaviest debris. Excellent for wet and dry use; over pavement, concrete and driveways.



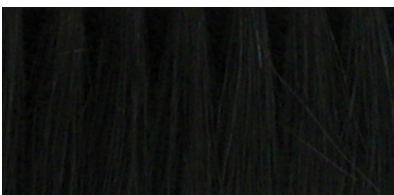
### Polypropylene

Polypropylene is a synthetic fiber that is available in many colors and weights for different applications. Poly fibers have a long useful life and are acid and solvent resistant. They are waterproof and rot resistant, and dry quickly. Crimped poly fibers have more water retention ability, and flagged poly fibers have a soft bristle tip that can gather fine particles of debris. Perfect for industrial and commercial settings where sweeping is constant, polypropylene can be used for scrubbing wet and dry surfaces.



### Polystyrene

A durable synthetic fiber that resists moisture and most solvents, polystyrene is almost as strong as aluminum, but much more flexible. Flagged polystyrene fibers deliver dependable, non-scratch performance to painted vehicle surfaces and windows. Excellent for service stations, food service and other commercial applications.



### Tampico

Derived from the leaf of the Lechugilla plant of Mexico, tampico has a soft to medium texture. It has a natural white color, but is frequently dyed or bleached. Tampico has good resistance to heat and chemicals, good water retention, and can maintain its stiffness while wet. It has excellent shape memory, and can be used alone or blended with other fibers.

## Floor Sweeps

### Palmyra

Good for indoor or outdoor sweeping on concrete or any other hard surface. Stiff brown natural fiber. Lacquered, quality hardwood blocks. Hardwood block with 3 1/4" trim

### Black Polypropylene Fiber

Medium floor sweep. Ideal for commercial and industrial floors. Tough enough for outdoor sweeping. Hardwood block in 3" trim. Highly recommended for multiple uses.

### Black Tampico

Medium/fine floor sweep. Soft, black natural fibers for smooth or rough floors. Hardwood blocks in 2 3/4" trim.

### Maroon Polypropylene Fiber

Heavy floor sweep. A man-made coarse fiber. Great for heavy duty use in a commercial or industrial setting, like gas stations, garages, or car wash. Impervious to water. Hardwood block in 3" trim.

### Grey Polypropylene Fiber

Soft flagged grey plastic fiber is ideal for sweeping fine dust and dirt on smooth surfaces. Hardwood block with 3" trim.



SB10006



SBP10006



L100



S100

PALMYRA	BLACK POLY	BLACK TAMPICO	MAROON POLY	GREY POLY	LENGTH INCHES	CASE PACK	CASE CUBE	WEIGHT LBS
P10005	BP18	T80100	MP18	FC18 G	18	12	1.67	20.3
P10003	BP24	T80001	MP24	FC24 G	24	12	2.20	30.5
P10007	BP36	T80300	MP36	FC36 G	36	6	1.77	23.5



Our wooden brush blocks derive from sustainably managed forests

## Street Broom

Coarse natural palmyra or synthetic fibers push heavy debris from streets, sidewalks and parking lots. Either style may be used wet or dry.

ITEM NO.	DESCRIPTION	LENGTH INCHES	CASE PACK	CASE CUBE	WEIGHT LBS
SB10006	Palmyra Stalk	16	12	2.58	32
SBP10006	Brown Plastic	16	12	2.58	34

## Push Broom Handle Braces

Both the large and small handle braces lend added support to prevent handles from breaking under strenuous conditions. The small brace may be used on all push broom sizes however, the large brace is recommended for 36" blocks.

ITEM NO.	SIZE	CASE PACK	CASE CUBE	WEIGHT LBS
L100	Large	12	.030	4
S100	Small	60	.030	12



# UTILITY SCRUB BRUSHES

All utility scrub brushes are made using molded plastic blocks with either 8" or 20" handles. A variety of fibers are available to suit your specific needs: fine, coarse, natural, or synthetic.

## Cream Plastic

Polypropylene fibers are resistant to acids, solvents, and rot. Fibers are flared out to reach tight corners. Durable, waterproof poly fibers will not scratch or streak. Tough enough to scrub white wall tires, gentle enough to spot clean carpets and upholstery.

ITEM NO.	DESCRIPTION	CASE PACK	CASE CUBE	WEIGHT LBS
CP-8	Utility Brush Cream Plastic 8.5"	12	0.60	5
CP-20	Utility Brush Plastic 20"	12	1.15	9



## Palmyra

Palmyra is an economical, all-purpose natural scrub for heavy duty hand scrubbing, both commercial and residential. Strong, stiff fibers are flared to reach debris to tight corners. Palmyra will not scratch or streak, but it powers through tough industrial-strength dirt and grime.

ITEM NO.	DESCRIPTION	CASE PACK	CASE CUBE	WEIGHT LBS
PAL-8	Utility Brush Palmyra 8"	12	0.60	5
PAL-20	Utility Brush Palmyra 20"	12	1.15	9



## White Nylon

Nylon is a silky, flexible synthetic fiber that with superior abrasion resistance. Nylon stands up to common cleaners, detergents, acids or alkalis, and has excellent water retention. Nylon does not mat or hold odors. Nylon fibers are heat resistant, ideal for scrubbing kitchen areas. Good choice for all-purpose food service and healthcare cleaning.

ITEM NO.	DESCRIPTION	CASE PACK	CASE CUBE	WEIGHT LBS
N-9	Utility Brush White Nylon 9"	12	0.60	5
N-20	Utility Brush White Nylon 20"	12	1.15	9



## Tampico

Tampico is a natural fiber with a soft to medium-soft texture, with excellent water and solution retention. Good light-duty scrubbers, tampico brushes will not scratch or streak. Tampico is resistant to cleaning chemicals, and makes a good general cleaning brush for institutional and commercial settings.

ITEM NO.	DESCRIPTION	CASE PACK	CASE CUBE	WEIGHT LBS
WT-8	Utility Brush White Tampico 8.5"	12	0.60	5
WT-20	Utility Brush White Tampico 20"	12	1.15	9



# UTILITY SCRUB BRUSHES

## Hand Scrub Brush

These brushes are ideal for small jobs where detailed cleaning is required. Our iron handle brush is comfortable to hold and can be used for many scrubbing jobs including upholstery. The stiff black fibers of our grout brush are ideal for tough to reach grout jobs.

ITEM NO.	DESCRIPTION	CASE PACK	CASE CUBE	WEIGHT LBS
HS-IS6	6" Iron-Style Scrub Brush, Poly fiber	24	0.46	11.0
GB100	Grout Brush Nylon, Poly fiber	24	0.10	1.68
HS-WP9SB	Scrub Brush, wood block, Poly fiber	24	0.58	16.0
HS-WP9CB	Can Scrub Brush, Poly fiber	24	0.25	11.0
5NCB	Fingernail Scrub brush, wood block, white tampico fiber	20	0.22	0.3



HS-IS6

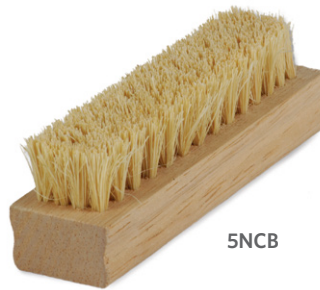


HS-WP9CB

 Our wooden brush blocks derive from sustainably managed forests



HS-WP9SB



5NCB



GB100

## Wash Brush

Soft flagged polystyrene fibers and bumpers prevent unwanted scratches and damage when cleaning vehicles. All brushes feature structural foam blocks with a tapered handle hole and a flow through threaded handled hole for use with fountain handles. Perfect for large cleaning jobs where a delicate touch is needed.

ITEM NO.	DESCRIPTION	CASE PACK	CASE CUBE	WEIGHT LBS
TB100	Truckwash Brush - Gray Flagged	12	1.23	18
VB100	Dual Surface Vehicle Brush	12	1.75	18
WWBR4	Window Wash Brush	12	1.2	12.1



WWBR4

TB100



VB100

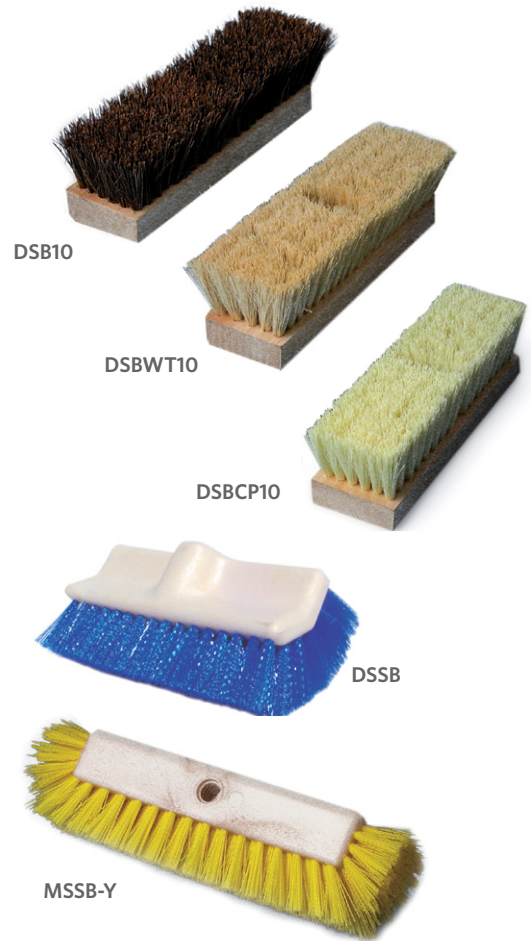


## Deck Scrub Brush

Our standard deck scrubs are available with a variety of fibers staple set into hardwood blocks each having a tapered handle hole and a threaded handle hole. Multi surface and dual surface deck scrubs have crimped synthetic bristles set into structural foam blocks with one threaded handled hole. Whether you need chemical resistant polypropylene, the coarse scrubbing of palmyra or the liquid retention of tampico it can be found in these scrubs. Ideal for decks, patios, sidewalks or even baseboards and walls.

ITEM NO.	DESCRIPTION	CASE PACK	CASE CUBE	WEIGHT LBS
DSB10	Deck Brush Palmyra 10	12	0.55	11
DSBWT10	Deck Brush White Tampico 10	12	0.55	11
DSBCP10	Deck Brush Cream Plastic 10	12	0.55	11
DSBCP12	Deck Brush Cream Plastic 12	12	0.65	15

ITEM NO.	DESCRIPTION	CASE PACK	CASE CUBE	WEIGHT LBS
DSSB	Dual-Surface Brush	12	1.74	16
MSSB-Y	Multi-Surface Brush	12	1.11	16



## Toilet Brushes, Mops and Plungers

- SBB-12T** 20" Coated & twisted wire tampico will not scratch porcelain surfaces
- SBB-11** 11" Plastic handle with cylindrical staple set fibers to prevent scratching surfaces.
- CBW** Heavy duty handle with wringing cone. Cone slides over acid resistant acrylic yarn to remove excess liquids. Will not scratch porcelain fixtures.
- DBW** Acrylic yarn and I beam handles combine to make a superior cleaning mop. 12" white handle. Will not scratch porcelain fixtures.
- TBP100** Janitorial plunger has large cup for maximum pressure. 21" heavy duty yellow wooden handle.

ITEM NO.	DESCRIPTION	CASE PACK	CASE CUBE	WEIGHT LBS
SBB-12T	20" Coated & twisted wire tampico	24	1.38	12
SBB-11	11" Staple set cylindrical bowl brush	24	1.38	5
CBW	Cone Bowl Mop	50	1.44	8
DBW	Economy Bowl Mop	100	1.10	13
TBP100	Toilet Plunger	6	0.63	10.1



# Dusters & Applicators

## Counter Dusters

Counter dusters are available with smooth sweeping, grey flagged fibers, medium to fine tampico fibers, or medium black polypropylene fibers. All are set in structural foam blocks that feature an 8" sweeping face and a hanging hole. These dusters are great for workshops and industrial settings where equipment and work areas need to be kept tidy.

ITEM NO.	DESCRIPTION	CASE PACK	CASE CUBE	WEIGHT LBS
CD-BT8	Counter Brush Black Tampico	12	0.79	9
CD-BP8	Counter Brush Black Plastic	12	0.79	9
CD-FP8	Counter Brush Gray Flagged	12	0.79	9



CD-FP8

CD-BP8

## Lambskin Applicators

Lambskin applicators have 3/4" thick Lambswool to provide a smooth lint and fiber free finish coat. Use with waxes, sealers and other floor finishes. Lambskin pad is wrapped around a lacquered hardwood block. Wing nuts and a smaller interior block hold the lambskin in place, and allow for easy pad replacement. Hardwood blocks have standard threaded holes.

ITEM NO.	DESCRIPTION	CASE PACK	CASE CUBE	WEIGHT LBS
LAB12	12" Applicator with Block	12	1.46	13
LAB14	14" Applicator with Block	12	1.46	14
LAB16	16" Applicator with Block	12	1.46	20
LAB18	18" Applicator with Block	12	1.46 </td <td>25</td>	25
LAB24	24" Applicator with Block	12	1.46	40
LAP12	12" Refill Pad	12	0.82	2
LAP14	14" Refill Pad	12	0.82	2
LAP16	16" Refill Pad	12	0.82	3
LAP18	18" Refill Pad	12	0.82	3
LAP24	24" Refill Pad	12	0.82	4



LAB-16



LAP-16



SLD-MITT

## Overhead Duster

The flex head overhead duster FHDT has an aluminum handle and an overall length of 60 inches. Designed to be used with microfiber dusting mitt.

ITEM NO.	DESCRIPTION	CASE PACK	CASE CUBE	WEIGHT LBS
FHDT	Duster, Overhead, Tool, Flex Head	12	2.9	4.84
SLD-MITT	Spun Microfiber Dusting Mitt	12	0.68	4.0



FHDT

# DUSTERS & APPLICATORS

## Feather Dusters

**Turkey feather** - Economical, dyed feathers, available in 14" length.

**Brown Ostrich feather** - Available in 13", 14", 24", and also 31" for hard-to-reach spaces.

**Gray Ostrich feather** - Ostrich feathers have a natural static charge which attracts dust & cobwebs. Available in 20", and 28" lengths.

**Black Ostrich feather** - Premium black feathers have multiple silky tips to reach every dusty nook and crevice. Available in 20" and 28" lengths.

**Retractable Ostrich feather** - Premium ostrich feather performance in a convenient retractable handle that can fit in a pocket. 14" length only.

ITEM NO.	DESCRIPTION	CASE PACK	CASE CUBE	WEIGHT LBS
DTF14	Turkey Feather, 14"	12	0.85	1.5
DOF13-BROWN	Ostrich Feather, 13" Brown	12	0.28	1.8
DOF14-BROWN	Ostrich Feather, 14" Wood handle	12	0.28	1.8
DOF20-BLACK	Ostrich Feather, 20" Black	12	0.62	2.8
DOF20-GRAY	Ostrich Feather, 20" Gray	12	0.62	2.8
DOF24-BROWN	Ostrich Feather, 24" Brown	12	1.30	3.9
DOF28-BLACK	Ostrich Feather, 28" Black	12	1.30	3.6
DOF28-GRAY	Ostrich Feather, 28" Gray	12	1.30	3.8
DOF31-BROWN	Ostrich Feather, 31" Brown	12	1.30	4.3
DOF-RET14	Ostrich Feather, Retractable, 14"	12	0.85	1.5



## Synthetic Dusters

An economical alternative to Lambswool, synthetic Polywool is non-allergenic and washable. The extendable duster is great for hard-to-reach areas.

ITEM NO.	DESCRIPTION	CASE PACK	CASE CUBE	WEIGHT LBS
PSD23	23" Synthetic Duster, Multi-purpose	12	0.61	4.3
PSD51	51-82" Extendable Synthetic Duster	12	0.76	9.1



## Lambswool Dusters

Lambswool dusters quickly and easily lift fine dust particles without harming surfaces. When they become heavily soiled these dusters may be washed out and conveniently hung to dry by a hole in the handle. Available in various sizes and shipped in assorted colors.

ITEM NO.	DESCRIPTION	CASE PACK	CASE CUBE	WEIGHT LBS
L16	16" Lambswool duster	12	0.20	1.45
L26	26" Lambswool duster	12	0.28	2.15
L3850	38"-50" Extendable lambswool	12	0.34	2.95



# CORE<sup>e</sup><sup>2</sup>

## Microfiber cleaning systems

Complete, Organized, Reliable, Efficient, and Environmentally friendly

### What is Microfiber?

Microfiber is very fine synthetic fiber composed of 80% polyester 20% polyamide (nylon) 100x finer than human hair. The fibers are split to create microscopic hooks and increase absorbency.

Split microfibers allow for more aggressive cleaning and removal of microscopic debris than conventional methods.

Many facilities can operate in a cleaner environment by using

microfiber cleaning products. Schools, healthcare facilities, and offices are all appropriate settings for the use of microfiber wet and dry pads.

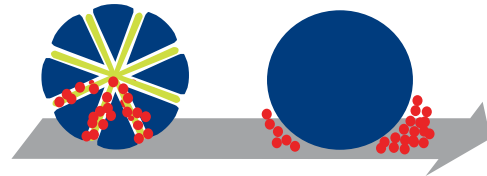
With rising concern over Indoor Air Quality, microfiber cleaning systems continue to be developed that keep cleaning for health as their foremost goal.



### How does Microfiber work?

*The dense construction of split microfibers creates a more efficient cleaning system through:*

- Positively charged microfibers attract negatively charged dust
- Pulls liquid and soil particles away from surfaces
- Surface tension is broken, allowing the option of cleaning with water or with fewer chemicals.



### Color Flag™ Coding System



Color-coding of cleaning equipment helps keep your building, employees and occupants safe and healthy by reducing the risk of using cleaning tools from one department in another.

Color-coded tools simplify the daily tasks for cleaning employees, and reduce the chance for mistakes in cleaning chemical mixing.

The CORE2 microfiber system from O'Dell is a safe, effective, and economical way to color-code your microfiber cleaning equipment.

Avoid cross contamination and keep supply management costs in check by using the full color range of products or our unique color flag system which allows for a single inventory with four color options.

Color Flags make color coding convenient. Simply remove the unwanted flags when bringing a pad into service, and your pad is color-coded for its department. Frames and handles come with snap-on plastic Color Flag rings.

Use the Color Flag rings to designate red, blue, yellow or green. All new Color Flag buckets come with water and chemical resistant vinyl labels that are easy to apply.

**Manage your cleaning supplies with the CORE2 color coding system.**

# CORE2 BUCKETLESS MOPPING SYSTEM

**Outperforms the competition at every level with more innovative features.**



The powerful combination of O'Dell Microfiber Pads and the direct dispensing design of the Advantage saves time, chemical and water use, and labor cost. The direct application of uncontaminated cleaning solution reduces chemical use and virtually eliminates cross contamination and wastewater.

O'Dell's Advantage+ is compatible with the O'Dell products found on pages 31-35.

ITEM NO.	DESCRIPTION	CASE PACK	CASE CUBE	WEIGHT LBS
BWMS-16	Hook & loop	1	0.65	4.0
BWMS-16PKT	Pocket	1	0.65	4.9
BWMS-WMT	Compact Frame Hook & loop	1	0.65	4.0

#### REPLACEMENT PARTS

BWMS-VK	Valve kit	1	0.25	1.0
BWMS-T	Tether without cap	1	0.13	1.0
BWMS-TC	Tether and top bottle cap	1	0.25	1.0
BWMS-CV	Bottom bottle cap valve	1	0.25	1.0
BWMS-BTC	Bottle with tether and caps	1	0.34	1.0

#### HANDY MOP

SLMHMP	5 x 12" Spun loop pad	12	0.41	2.0
WMT	Wall mop tool	12	0.34	5.4



# CORE2 BUCKETLESS MOP KITS



## Advantage+ Pocket Starter Kit

For the Healthcare conscious custodian, this Advantage+ kit comes with a pocket frame, and four pocket spun loop microfiber pads. The pocket attachment allows for hands free removal of the soiled pad, reducing the risk of cross contamination.

**BWMS-16-PKTKIT-A4** includes 4 blue knitted pocket pads (MFM185B-PKT)

**BWMS-16-PKTKIT-B4** includes 4 spun loop color flag pocket pads (SLM185PKT)

**BWMS-16-PKT-KIT-C4** includes 4 spun loop color flag mesh pocket pads (SLM185MSH).



## Advantage+ Hook and Loop Starter Kit

Advantage Plus with a hook and loop frame, and 4 premium microfiber wet pads.

**BWMS-16-KITA4** includes 4 blue knitted color flag pads (MFM185B-CF)

**BWMS-16-KITB4** includes 4 spun loop color flag pads (SLM185)



ITEM NO.	DESCRIPTION	CASE PACK	CASE CUBE	WEIGHT LBS
BWMS-16-FLP-KIT4	Flip mop	1	1.54	7.55
BWMS-16-PKTKIT-A4	Blue knitted pocket	1	1.54	7.45
BWMS-16-PKTKIT-B4	Spun loop pocket	1	1.54	7.35
BWMS-16-PKTKIT-C4	Spun loop mesh pocket	1	1.54	7.60
BWMS-16-KITA4	Blue knitted hook and loop	1	0.53	5.35
BWMS-16-KITB4	Spun Loop hook and loop	1	1.54	7.15

Ergonomic 360 degree rotating handle cap reduces user fatigue and provides smooth figure eight application.

Ball trigger Works like a pen. Click-on/click-off reduces hand fatigue. No need to continually squeeze the trigger.

Large, easy-to-fill, tethered cap features an integrated hanger to store multiple bottles on maid's cart.

Sliding handle hook makes storage simple.

Top and bottom caps and removable bottle make cleaning easy.

32 Ounce capacity bottle includes fill level graduations in ml and ounces.

Chemical Identifier labels are bilingual and provided with every unit.

Viton seals ensure confident operation with a variety of heavy duty chemicals.

Secure ball-valve guarantees a positive on and positive off flow control unlike competitors with unreliable pinch valves.

Handle end constructed to accept pinch style, hook-and-loop, yoke style, and collapsing frame configurations to compliment any O'Dell program the distributor is stocking.

Heavy duty frame and 360° swivel



## Why use Microfiber Spun Loop pads?

- High loop pile gives higher absorption than woven pads
- Cleans uneven surfaces
- Loops capture large particles
- Loop pile gives greater saturation to insure proper dwell times for cleaning chemicals
- Durable up to 500 washes (200 washes with diluted chlorine bleach)
- Clean more floor space with one pad



### Spun Loop Handy Mop Pad

- Clean hard flat surfaces like tables; desks; and cabinets with the handy mop (SLMHMP) and Trowel (HMT).
- Clean Walls and other hard-to-reach surfaces with the Handy Mop Pad and the Wall Mop Tool (WMT). See page 35 for handle selections.

ITEM NO.	SIZE	DESCRIPTION	CASE PACK	CASE CUBE	WEIGHT LBS
SLMHMP	5 x 12"	Gray w/color flags	120*	3.67	29.75
HMT	3¾ x 9½"	Hand Tool	12	0.34	6.7
WMT	3¾ x 9"	Wall Tool	12	0.34	5.4

\* 10 packs of 12



HMT



WMT



SLMHMP

# CORE2 SPUN LOOP PADS FOR WET FLOOR APPLICATIONS

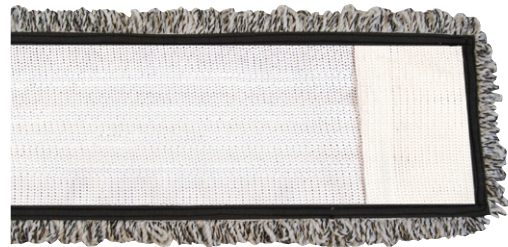


## SPUN LOOP WET PAD Hook & Loop

**Color flag coding** meets HACCP compliance with just one pad (not four) **or** a solid color pad - your preference. Fits hook-and-loop frame (AMFMF-16). See page 35 for handle and frame selections. Size: 5" x 18"

ITEM NO.	DESCRIPTION	CASE PACK	CASE CUBE	WEIGHT LBS
SLM185	Gray w/color flags	120*	5.64	45.0

\* 10 packs of 12



## SPUN LOOP WET PAD Mesh Pocket

**Color flag coding** meets HACCP compliance with just one pad (not four) **or** a solid color pad - your preference. Fits pocket frames. See page 35 for handle and frame selections. Size: 5" x 18"

ITEM NO.	DESCRIPTION	CASE PACK	CASE CUBE	WEIGHT LBS
SLM185MSH	Gray w/color flags	120*	5.67	41.75

\* 10 packs of 12



## SPUN LOOP WET PAD Polyester Pocket

**Color flag coding** meets HACCP compliance with just one pad (not four) **or** a solid color pad - your preference. Fits pocket frames. See page 35 for handle and frame selections. Pocket pad allows hands-free removal from the frame. Size: 5" x 18"

ITEM NO.	DESCRIPTION	CASE PACK	CASE CUBE	WEIGHT LBS
SLM185PKT	Gray w/color flags	120*	5.67	40.5

\* 10 packs of 12





## EchoLine® Microfiber Wet Pads

Color Flag Coding - HACCP compliance with one pad, not four. O'Dell Echoline microfiber wet pads have the highest fabric weight in our industry. Heavy duty hook and loop or polyester pocket back. Fits standard 18" frames. **MF185B-CF** uses frame (AMFMF-16). See page 35 for handle selections. Inner microfiber layer gives greater saturation to insure proper dwell time and split microfiber captures particles. Lasts hundreds of launderings.

ITEM NO.	DESCRIPTION	CASE PACK	CASE CUBE	WEIGHT LBS
MF185B-CF	5 x 18"	120*	4.24	35.0

\* 10 packs of 12



MF185B-CF



## Power Scrub Microfiber Pad

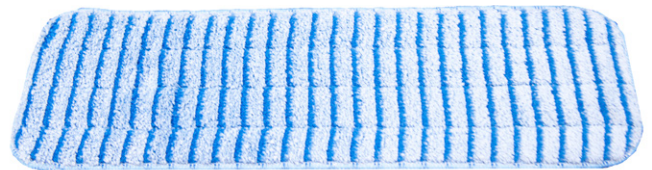
When a floor requires more persuasive cleaning, use the Power Scrub microfiber pad with scrubbing fibers to help remove stains on most hard surfaces. Good for cleaning stone and ceramic tile, and power-lifting stains from grout lines. Use in heavy traffic areas like lobbies, restrooms and foodservice areas, to lift stubborn grime from recessed areas in your tile floors.

- Scrubbing fibers integrated into pad
- Unique 'smooth-glide' design provides less drag across floor surfaces
- Uses frame (AMFMF-16). See page 35 for handle selections.

ITEM NO.	DESCRIPTION	CASE PACK	CASE CUBE	WEIGHT LBS
MFSP185B	5 x 18"	120*	2.84	24.0

\* 10 packs of 12

MFSP185B



## Microfiber Flat Wet Mop Pad

5 x 18" wet pad fits standard 18" hook and loop frames. **EMFM185** has a 6mm foam core. **PMF185B** has a durable nonwoven core.

ITEM NO.	DESCRIPTION	CASE PACK	CASE CUBE	WEIGHT LBS
EMFM185	Economy	120*	2.69	17.6
PMF185B	Premium	120*	3.11	28.9

\* 10 packs of 12

EMFM185



PMF185B



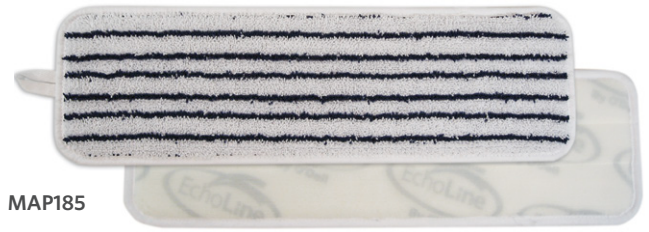
## Microfiber Finish Pads

Microfiber Applicator (MAP) - finishing pads that are smooth and streak-free at an economical price. Offers superior sewn construction and ultra-fine microfibers, giving a super-soft pad that ghosts over surfaces without streaking, but which is durable enough to withstand repeated launderings.

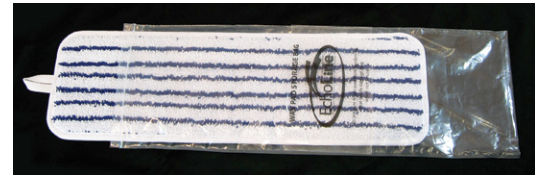
- Fits standard 18" & 24" hook and loop frames
- MAP185 uses frame (AMFMF-16) and handle (TH-BF60) and MAP245 uses frame (AMFMF-22) and handle (TH-BF60)

Use with our Finishing/Wringing bucket (MBMF6B)

ITEM NO.	DESCRIPTION	CASE PACK	CASE CUBE	WEIGHT LBS
MAP185	5 x 18"	12	0.29	2.1
MAP245	5 x 24"	12	0.37	2.9



MAP185



Each pad comes packaged in a resealable storage bag  
Lengthen the lifespan of your finish pad by storing in the resealable bag between uses and between launderings

## EchoFiber® Loop Mops

EchoFiber® Loop Mops combine the cleaning power of split microfiber with convenience - they fit traditional handles, bucket, and wringers! Advanced microfiber synthetic loops are bound by a tail-band. EchoFiber mops will not tangle, leave strings, or snag. These mops are lightweight, easy to use, easy to wring, and fast drying. They last hundreds of launderings. Available in 5" Wide Band or Narrow Band.

WIDE BAND	NARROW BAND	SIZE	COLOR	CASE PACK	CASE CUBE	WEIGHT LBS
MWTM-B	—	M	Blue	12	1.09	8.0
MWTM-G	MWTM-GNB	M	Green	12	1.09	8.0
MWTM-R	—	M	Red	12	1.09	8.0
MWTM-Y	—	M	Yellow	12	1.09	8.0
MWTL-B	MWTL-BNB	Lg.	Blue	12	1.77	14.3
MWTL-G	MWTL-GNB	Lg.	Green	12	1.77	14.3
MWTL-Y	—	Lg.	Yellow	12	1.77	14.3
MWTL-R	—	Lg.	Red	12	1.77	14.3



wide band



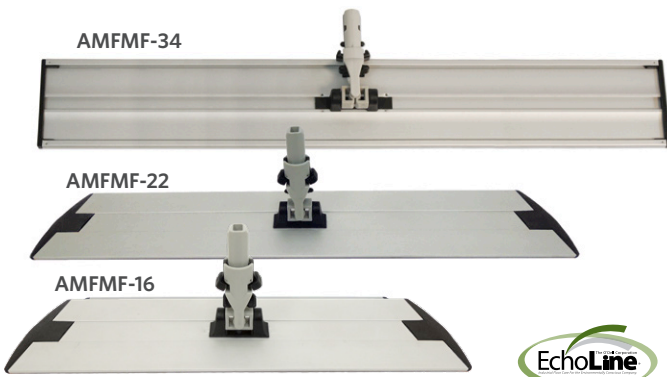
narrow band

- Superior strength
- Immediate absorption
- Micro-level cleaning
- Laundered 100s of cycles
- Lint free
- Easy glide performance



After 300 washes





No-pinch, quick release buttons

Comes with complete color flag set.



## Echoline® Microfiber Handle & Frames

Our microfiber hardware is made of lightweight yet durable aluminum. You may choose from a lockable telescopic handles that extend from 34 - 60 inches, or a solid 60" non telescopic style. Simply slide frame connector into the telescopic handle and it locks into place with an easy-to-open push button. Frames have hook and loop strips which can be used with wet or dry microfiber pads. Frame swivels to provide full 360° range of motion, or can be locked in place. Frames are available in 16-46 inch sizes. The 16" and 22" frames are lighter, and have exchangeable hook and loop strips for longer use. The channeled aluminum frame provides greater support for larger pads and is available in 34 or 46". Comes with Color Flags.

ITEM NO.	DESCRIPTION	CASE PACK	CASE CUBE	WEIGHT LBS
AMFMF-16	16" Alum. Frame for 18" Pad	12	0.47	8.4
AMFMF-22	22" Alum. Frame for 24" Pad	12	0.82	13.2
AMFMF-34	34" Alum. Frame for 36" Pad	12	1.17	18.0
AMFMF-46	46" Alum. Frame for 48" Pad	12	1.43	24.2

TH-BF60



TH-MF60



MFH60



Handles come with 4 color flag snap-on sleeves



## Microfiber Care Instructions

for best results:

- Wash in laundry net.
- Use a front load washer. If using a top load washer with an agitator, select the delicate cycle.
- Do not use chlorine bleach or strong alkaline detergent.
- Launder microfiber wet pads, finish pads, and conventional mops separately.
- Do not use fabric softener.
- Dry below 140° F, avoid over-heating the pads and remove promptly from dryer when finished.

## Laundry Net

Specially designed polyester leno weave mesh bags for laundering mops and pads. Laundering pads in a mesh bag will minimize tangling or contamination. Comes with a slip lock closure and I. D. tag. Available in blue or white.

ITEM NO.	COLOR	SIZE	CASE PACK	CASE CUBE	WEIGHT LBS
L2436W-ID	white	24" x 36"	12	0.84	11.0
L2436B-ID	blue	24" x 36"	12	0.84	11.0
L1830W-ID	white	18" x 30"	12	0.84	6.0
L1830B-ID	blue	18" x 30"	12	0.84	6.0





## Microfiber Charging Bucket

Streamline your microfiber system with presoak charging buckets. To prepare sets of pads or cloths ahead of time, mix cleaning solution, and add solution per the solution chart.

Stack pads or cloths in the bucket, face pads down, pour in solution, seal the lid, and invert. Pads/cloths will absorb cleaning solution in 10-15 minutes. 6 Gallon buckets hold up to 20 pads and 3.5 gallon buckets hold up to 40 cloths.

**6 Gallon buckets use with the following:** MFM185, MFM85B-PKT, SLM185, SLM185PKT, and SLM185MSH.

**3.5 Gallon buckets use with the following:** MFK series cloths, and SLMHMP pads.

ITEM NO.	COLOR	SIZE	CASE PACK	CASE CUBE	WEIGHT LBS
CBMF6GY	Gray w/color flags	6 gal	1	2.37	6.4



**CBMF6GY**

*Gray bucket comes with complete color flag set and wheels.*

### SOLUTION CHART

PAD/CLOTH	CLEANING SOLUTION
MFM185B-CF	12oz. /pad
MFM185B-PKT	13oz. /pad
SLM185	14oz. /pad
SLM185PKT	14oz. /pad
SLM185MSH	14oz. /pad
MFK	8oz./cloth
SLMHMP	7oz./pad

1. Add cleaning solution
2. Add microfiber pads or cloths, face down in bucket
3. Snap on bucket cover and invert on top to saturate pads or cloths



# CORE2 CHARGING BUCKET STARTER KITS

**Want to make the switch to microfiber, but not sure where to begin?** Starter kits give you the essentials for your microfiber cleaning collection. Kits include a microfiber charging bucket, a telescopic handle, frame, 12 premium 18" microfiber pads, and 12 microfiber cleaning cloths.

## Hook and Loop Starter Kit

- 1 Microfiber charging bucket (CBMF6)
- 1 Telescopic handle (TH-BF60)
- 1 Standard hook & loop frame (AMFMF16)
- 12 Premium 18" microfiber pads
  - Kit A includes (MFM185B-CF)
  - Kit B includes (SLM185)
- 12 Blue microfiber cleaning cloths (MFK-B)

CBMF6GY-KITA12



## Spun Loop Pocket Starter Kit

- 1 Microfiber charging bucket (CBMF6)
- 1 Telescopic handle (TH-BF60)
- 1 Standard pocket frame (PMFPKT)
- 12 Premium 18" spun loop pocket microfiber pads (SLM185-PKT)
- 12 Microfiber cleaning cloths

CBMF6GY-PKTKITB12



## Mesh Spun Loop Pocket Starter Kit

- 1 Microfiber charging bucket (CBMF6)
- 1 Telescopic handle (TH-BF60)
- 1 Standard pocket frame (PMFPKT)
- 12 Premium 18" spun loop pocket microfiber pads (SLM185-MSH)
- 12 Microfiber cleaning cloths

CBMF6GY-PKTKITC12



ITEM NO.	DESCRIPTION	CASE PACK	CASE CUBE	WEIGHT LBS
CBMF6GY-KITA12	Hook and Loop Starter Kit A	1	2.90	12.60
CBMF6GY-KITB12	Hook and Loop Starter Kit B	1	2.90	13.15
CBMF6GY-PKTKITB12	Spun Loop Pocket Starter Kit	1	2.90	13.40
CBMF6GY-PKTKITC12	Mesh Spun Loop Pocket Starter Kit	1	2.90	13.60

## Touchless Mop System

The Touchless Mop System is the smartest patented microber mopping tool for easy touch-free pad pick-up and touch-free pad POP off!

The innovative pump action handle ejects the used microber pad from the mop head for convenient collection and reduces the risk of contamination.

The Touchless Mop System makes cleaning easier and more efficient, leaving the dirty work behind.

- Lightweight and agile, with a full 360° swivel head
- Four hook fields hold microfiber pads in place
- Works with large 16 or 18" microfiber pads
- Telescopic Handle extends from 49-63" and features Color Flags for HACCP Compliance

ITEM NO.	DESCRIPTION	CASE PACK	CASE CUBE	WEIGHT LBS
TFMH-15	Touchless Microfiber Mop System	4	2.15	8.93

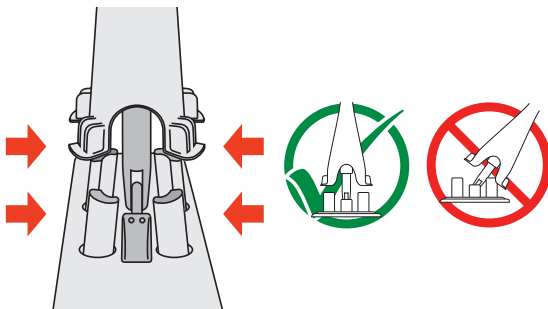


## Instructions

To remove the used microfiber pad from your new Touchless Mop System follow these steps:

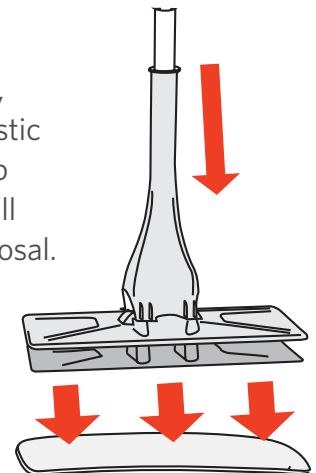
### STEP 1

After cleaning with your Touchless Mop system align the plastic housing on the handle to the 4 contact posts on the mop head.



### STEP 2

Once the housing is aligned to the 4 posts, push down on the plastic housing, using a pump action, and the pad will POP off for quick disposal.





## Microfiber Dry Dust Pads with Fringe

Microfiber dry dusting pads have a positive electrostatic charge that traps fine particles and keeps them until laundered. Fringe traps large particles like a standard dust mop. Available in 18, 24, 36, 48, and 60 inch sizes. Fringed microfiber pads cover more surface area than plain dust pads. Lasts hundreds of launderings.

Slot pocket style fits standard dust mop wire frames and clip-on handles (ex: MFD185G-FSP uses frame # F185 and handle # H600).

ITEM NO.	SIZE	CASE PACK	CASE CUBE	WEIGHT LBS
----------	------	-----------	-----------	------------

### Slot Pocket Backing

MFD185G-FSP	5 x 18"	6	0.29	2.55
MFD245G-FSP	5 x 24"	6	0.43	3.25
MFD365G-FSP	5 x 36"	6	0.43	4.45
MFD485G-FSP	5 x 48"	6	0.75	5.50
MFD605G-FSP	5 x 60"	6	0.92	6.20

### Hook and Loop Backing

MFD185G-F	5 x 18"	12	0.46	3.0
MFD245G-F	5 x 24"	12	0.61	4.0
MFD365G-F	5 x 36"	12	0.87	4.2
MFD485G-F	5 x 48"	12	1.23	4.6

SLOT POCKET



HOOK & LOOP



## Spun Loop Dust Mop Refill

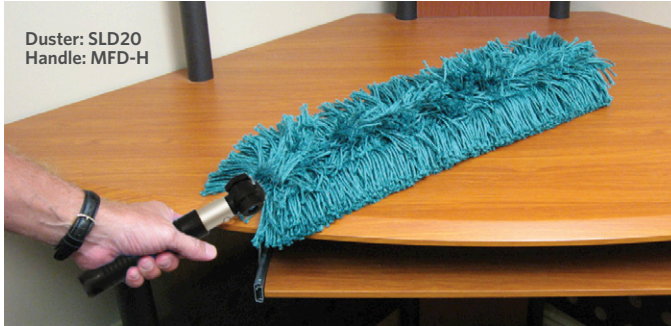
Microfiber dry dusting pads have a positive electrostatic charge that traps fine particles and keeps them until laundered. The heavy debris pick-up power of a fringed dry pad is perfected with the spun loop dust mop. Lasts hundreds of launderings. 100% Looped fringe construction provides maximum dust pick-up. Available in 18, 24, 36, 48, 60, and 72 inch sizes.

Fits standard dust mop wire frames and clip-on handles (ex: SLD185GSP uses frame # F185 and handle # H600)

ITEM NO.	SIZE	CASE PACK	CASE CUBE	WEIGHT LBS
SLD185GSP	5 x 18"	12	1.08	4.90
SLD245GSP	5 x 24"	12	1.33	6.50
SLD365GSP	5 x 36"	12	1.47	9.70
SLD485GSP	5 x 48"	12	1.91	12.10
SLD605GSP	5 x 60"	12	2.40	14.40
SLD725GSP	5 x 72"	12	2.79	17.00

SPUN LOOP REFILL





## Microfiber Dusting Tools

MicroFeather™ dusting tools feature very fine split microfiber. Soft feathers of microfiber trap and store minute dust particles and will not scratch delicate surfaces.

- **MicroFeather duster (MFD23)** outperforms ostrich, lambswool, and polywool dusters. Flexible head fits any dusting job. Threaded to accept extension handle (TH-BM60). Available in white only.
- **18" MicroFeather Flexible Duster (MFD18)** performs like our MicroFeather duster, with a solid handle. Assorted colors.
- **11" MicroFeather Mini Duster (MFD11)** Convenient size for home and office use. Assorted colors.
- **Flexible Wand Duster (MFD-H)** For hard-to-reach areas, the Flexible Wand Duster has a threaded handle which fits standard extension handles (TH-BM60). Microfiber head (MFD-R20) is launderable.
- **Spun Microfiber Duster (SLD20)** fits the Flexible Wand Duster. Picks up heavy debris and fine particles, trapping them until laundering. Lasts hundreds of launderings.
- **Spun Microfiber Dusting Mitt (SLD-MITT)** uses the same material as our spun loop dustmops, for heavy debris clean up. Lasts hundreds of launderings. Use with overhead duster (FHDT).
- **Flex Overhead Duster (FHDT)** has an aluminum handle and an overall length of 60 inches. Designed to be used with microfiber dusting mitt. (SLD-MITT)

ITEM NO.	DESCRIPTION	CASE PACK	CASE CUBE	WEIGHT LBS
MFD23	19" Microfeather Duster	24	0.61	7.6
TH-BM60	3-5' Telescopic Handle	12	0.91	10
MFD-H	Duster, Flexible Wand, Tool Only	12	0.44	4.7
MFD-R20	Duster, Replacement Sleeve, 20"	50	1.37	8.15
SLD20	Spun Microfiber Dusting Sleeve, 20"	12	0.78	5.5
SLD-MITT	Spun Microfiber Dusting Mitt	12	0.68	4.0
FHDT	Duster, Overhead, Tool, Flex Head	12	2.9	4.84

TH-BM60



**To hand wash microfiber dusters:** Wash head with warm soapy water, rinse, towel dry, then spin between hands to fluff. Hang to dry.





**BioFiber® is the perfect disposable dusting sheet for your green cleaning program.**

- **Effective** - Outperforms the “famous” disposable dusting sheets
- **Economical** - Attracts 99% of bacteria without chemicals
- **Energetic** - Draws and locks dust by building an electrostatic charge
- **Disposable** - In landfill or compost bin- breaks down in 4-6 weeks
- **Biodegradable**- meets ASTM D6400-99 biodegradability standard

To see a video product demo, visit [www.odellcorp.com](http://www.odellcorp.com)

ITEM NO.	DESCRIPTION	CASE PACK	CASE CUBE	WEIGHT LBS
BF248	8 x 24" dusting sheets	200	1.15	4.9
BF100	100 sheet roll	4	2.69	11.0
SCF244	4 x 24" padded spring clip frame	6	0.97	6.8
SCF484	4 x 48" padded spring clip frame	6	2.37	13.6
TH-BF60	40-60" telescopic handle	6	0.38	3.0



**Breaks down into less than 1oz. inert material**

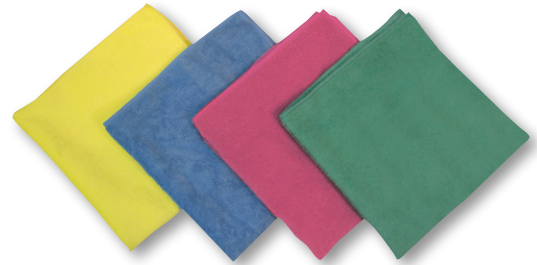


**Spring clip snaps quickly into place**

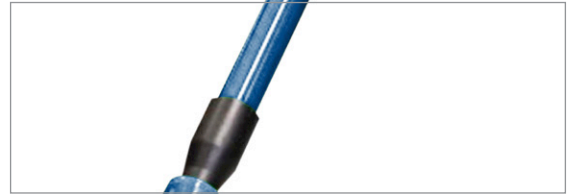
## Microfiber Cleaning Cloths

These make excellent cleaning & polishing cloths for foodservice and restroom areas. They hold 8X their weight in cleaning solution, and leave surfaces lint and streak-free.

ITEM NO.	DESCRIPTION	CASE PACK	CASE CUBE	WEIGHT LBS
<b>Knitted General Purpose Cloth (250g/m2)</b>				
MFK-B	16x16 - Blue	240 (20 pks of 12)	2.60	23.0
MFK-G	16x16 - Green	240 (20 pks of 12)	2.60	23.0
MFK-R	16x16 - Red	240 (20 pks of 12)	2.60	23.0
MFK-Y	16x16 - Yellow	240 (20 pks of 12)	2.60	23.0
<b>Knitted General Purpose Cloth (300g/m2)</b>				
MFK-W-300	16x16 - White	240 (20 pks of 12)	3.15	27.0
MFK-B-300	16x16 - Blue	240 (20 pks of 12)	3.15	27.0
MFK-G-300	16x16 - Green	240 (20 pks of 12)	3.15	27.0
MFK-R-300	16x16 - Red	240 (20 pks of 12)	3.15	27.0
MFK-Y-300	16x16 - Yellow	240 (20 pks of 12)	3.15	27.0
<b>Woven Glass/Mirror Cloth</b>				
MFW-B	16x16 - Blue	240 (20 pks of 12)	1.42	28.0



# Handles, Squeegees, & Floor Care Accessories



## Color Coded Fiberglass Handles

Excellent for push brooms, street brooms and squeegees, these durable handles come with a black nylon threaded tip. Color choices meet the USDA's hazard analysis critical control points (HACCP) to prevent cross contamination.

ITEM NO.	DESCRIPTION	SIZE	CASE PACK	CASE CUBE	WEIGHT LBS
HFR	Color Coded Handle, Red Fiberglass	1 x 60"	12	0.78	14
HFY	Color Coded Handle, Yellow Fiberglass	1 x 60"	12	0.78	14
HFB	Color Coded Handle, Blue Fiberglass	1 x 60"	12	0.78	14
HFBK	Black Fiberglass Handle	1 x 60"	12	0.78	14



HFR



HFY



HFB



HFBK

## Industrial Flat Handles

Metal threaded connector embedded into the handle's tip accepts a standard industrial flat molded cap.

ITEM NO.	DESCRIPTION	SIZE	CASE PACK	CASE CUBE	WEIGHT LBS
C-10	Industrial Flat Wood 54"	1 1/8 x 54"	12	0.55	10
C-11	Industrial Flat Wood 60"	1 1/8 x 60"	12	0.61	12



C-10

## Threaded and Tapered Handles

Wood and tapered handles are made of durable hardwood. Tapered end allows fast and easy changes. Wood and metal threaded have standard threads to fit multiple products. Handle number 0160M is a metal threaded tip on vinyl coated metal handle.

ITEM NO.	DESCRIPTION	SIZE	CASE PACK	CASE CUBE	WEIGHT LBS
0754	Wood Tapered	1 5/16 x 54"	12	0.5	11
0760	Wood Tapered	1 5/16 x 60"	12	0.56	12
0772	Wood Tapered	1 5/16 x 72"	12	0.67	13
0854	Wood Tapered	1 1/8 x 54"	12	0.55	13
0860	Wood Tapered	1 1/8 x 60"	12	0.61	14
0872	Wood Tapered	1 1/8 x 72"	12	0.73	15
0354	Wood Threaded	1 5/16 x 54"	12	0.5	11
0360	Wood Threaded	1 5/16 x 60"	12	0.56	12
0554	Wood Threaded	1 1/8 x 54"	12	0.55	13
0660	Wood Threaded	1 1/8 x 60"	12	0.61	14
0572	Wood Threaded	1 1/8 x 72"	12	0.73	15
0348	Metal Threaded	1 5/16 x 48"	12	0.44	10
0454	Metal Threaded	1 5/16 x 54"	12	0.5	11
0160	Metal Threaded	1 5/16 x 60"	12	0.56	12
0472	Metal Threaded	1 5/16 x 72"	12	0.67	13
0960	Metal Threaded	1 1/8 x 60"	12	0.61	14
0672	Metal Threaded	1 1/8 x 72"	12	0.73	15
0160M	Metal Threaded, Metal Handle	1 5/16 x 60"	12	0.56	12



Tapered Handle



Threaded Handle



Metal Threaded Handle



Metal Threaded, Vinyl Coated Metal

## Straight Rubber Squeegee

This black rubber squeegee is for medium duty jobs. It features non-marking 2" blades, a galvanized metal frame with lock strips and accepts standard tapered handles.

ITEM NO.	DESCRIPTION	SIZE	CASE PACK	CASE CUBE	WEIGHT LBS
SQF-24	Straight rubber squeegee	24"	6	1	16



## Floor Squeegee

Color choices meet the USDA's hazard analysis critical control points (HACCP) to prevent cross contamination. 18-24", non-marking blades are ideal for removal of liquids and light soil on uneven surfaces. Leaves floor dry to the touch. Made of sturdy, non corrosive plastic. Frame accepts standard threaded handle.

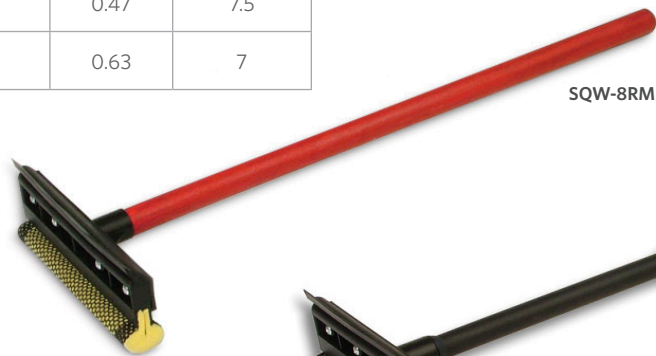
ITEM NO.	DESCRIPTION	SIZE	CASE PACK	CASE CUBE	WEIGHT LBS
SQF-18PW	Floor Squeegee, White	18"	12	0.84	6.2
SQF-18PY	Floor Squeegee, Yellow	18"	6	0.42	3.1
SQF-18PR	Floor Squeegee, Red	18"	6	0.42	3.1
SQF-18PG	Floor Squeegee, Green	18"	6	0.42	3.1
SQF-18PB	Floor Squeegee, Blue	18"	6	0.42	3.1
SQF-24PW	Floor Squeegee, White	24"	6	0.58	3.4
SQF-24PY	Floor Squeegee, Yellow	24"	6	0.58	3.4
SQF-24PR	Floor Squeegee, Red	24"	6	0.58	3.4
SQF-24PG	Floor Squeegee, Green	24"	6	0.58	3.4
SQF-24PB	Floor Squeegee, Blue	24"	6	0.58	3.4



## Auto Squeegee

Available with 13" long molded black plastic handle or 20" red metal handle. 8" sponge and blade. Sponge is covered by heavy duty mesh.

ITEM NO.	DESCRIPTION	SIZE	CASE PACK	CASE CUBE	WEIGHT LBS
SQW-8BP	Auto Squeegee Black Plastic Handle	8"	12	0.47	7.5
SQW-8RM	Auto Squeegee Red Metal Handle	8"	12	0.63	7



## Carpet Bonnets

DESCRIPTION	BONNET	ITEM NO.	SIZE	CASE PACK	CASE CUBE	WEIGHT LBS
<p><b>General</b></p> <p>Looped construction with scrubbing strips on both sides. Low profile, double faced, high quality bonnet.</p>		G17	17"	6	1.31	10
		G19	19"	6	1.62	11
		G21	21"	6	1.96	13

## Pad Driver

The 3/4" offset trim on our pad drivers holds carpet bonnets and scrubbing pads securely in place under both wet and dry conditions. The high impact block withstands the bumps and bruises associated with everyday use. Available in 13" thru 20" inch diameters each driver comes with riser and universal clutch plate attachment.

ITEM NO.	SIZE	CASE PACK	CASE CUBE	WEIGHT LBS
PPP13	13 x 1/2"	1	0.41	4.5
PPP14	14 x 1/2"	1	0.53	5
PPP15	15 x 1/2"	1	0.53	5.5
PPP16	16 x 1/2"	1	0.53	6
PPP17	17 x 1/2"	1	0.81	7
PPP18	18 x 1/2"	1	0.81	7.5
PPP19	19 x 1/2"	1	0.81	8
PPP20	20 x 1/2"	1	0.81	9



O'Dell offers many different options for the products that we manufacture. A very simple system of item number suffixes is used in designating the option that you may desire. Below you will find a listing of options available from O'Dell for your convenience.

### WB (Wide Band)

example: 5320FWB

Available on all wet mops that do not come standard with this option. We use 5" vinyl coated nylon mesh on all wide band mops. (15¢ ea. up charge for wide band where not standard)



### SP (Scrub Pad)

example: 5000M/White SP

Available on all mops manufactured by O'Dell. We use a 5" x 5" black scrub pad for aggressive removal of marks and debris. (30¢ ea. upcharge for scrub pad mops)



### 7", 8" & 9" Head Band

example: 4200L/Green9

Available on all wet mops that do not come standard with this option. We use vinyl coated nylon mesh or woven polyester cloth on expanded band width mops. Add desired width to end of part number. (25¢ ea. for 7", 35¢ ea. for 8", and 45¢ ea. for 9")



### TB (Tail Band)

example: 5516FTB

Available on most mopheads manufactured by O'Dell that do not come standard with this option. Tailbands provide even spread for streak-free enhanced area coverage with each swipe of the mop. As a standard all tailbanded mops have looped-ends as an added benefit. (80¢ ea. upcharge for tailbanded mops where not standard)



### NB (Narrow Band) NBM (Mesh Narrow Band)

example: 400M/Blue NB

Available on all wet mops that do not come standard with this option. We use 1 1/4" starched polyester canvas tape as well as vinyl coated nylon mesh on narrow band mopheads. (15¢ ea. deduction for narrow band where not standard)



### 2TB (Double Tailband)

example: 2000XL/Blue-2TB

Available on all loop mops from O'Dell. The second tailband ensures a tangle free product as well as adding longevity to the mophead. As with a single tailbanded mop the ends are looped as an added value. (.40ea upcharge to add second tailband)



### IF (Industrial Flat)

example: 2320FIF

Available on all wet mops manufactured by O'Dell. We use a plastic injection molded cap which incorporates a metal threaded stud that accepts standard industrial flat handles (C-10, C-11, C-25). (50¢ ea. up charge on all industrial flats).



### CE (Cut-End)

example: 900M/OrangeCE

Available on all mopheads from O'Dell that do not come standard with this option. The ends may be cut on standard loop mops however, the tailband will remain in place. (no price changes)



### TO (Twist-On)

example: 8000L/GreenTO

Available on all wet mops from O'Dell that do not come standard with this option. The plastic injection molded cap is threaded to accept any handle with standard acme threads. (40¢ ea. upcharge for twist-ons where not standard)



**Tools from O'Dell may be purchased on an individual basis or as a kit. Kits can be custom packed to meet your specific needs. This may also include mopheads, push brooms, upright brooms, handles, as well as any other item available from O'Dell.**

#### PURCHASE ORDER REVISION POLICY

Adding or deleting items, making quantity adjustments, or cancellation of an existing purchase order is allowed provided it is done **within 24 hours of our acknowledgment of receiving the original PO.**

**If the 24 hour time period has expired then a new PO must be placed.** If the new PO is received within 48 hours of the original PO then every attempt will be made to ship the two POs together. However, our ability to do so is dependent upon the specific products and the quantity ordered, so it is NOT guaranteed. If you would like for the two POs to ship together then understand that the original PO ship date will be delayed to the secondary PO ship date and we will need your approval to do so. Otherwise the original and secondary PO will ship independently of one another. It is important to note that if the secondary PO does not meet your prepaid requirements then freight will be added to the invoice.

#### MINIMUM ORDER QUANTITY

The minimum order quantity is \$1500.00. The minimum per product, per order for standard label is five cases and for private label 10 cases.

#### PREPAID FREIGHT MINIMUM

Standard prepaid freight is 500lbs. Standalone microfiber orders are prepaid on \$1500.00. If the order is mixed with microfiber and traditional products it must be at least 500 lbs to be prepaid regardless of the dollar amount.

#### CREDIT CARD POLICY

We accept Visa and MasterCard only. We do not accept debit cards. For all credit card payments a surcharge of 3% will be added to the invoice.



*O'Dell Ware Shoals Facility*



*O'Dell HP Facility*



#### **The O'Dell Corporation**

P. O. Box 540  
13833 Indian Mound Road  
Ware Shoals, South Carolina  
29692

Tel: 864-861-2222  
800-342-2843  
Fax: 800-445-1533

email: [info@odellcorp.com](mailto:info@odellcorp.com)  
[www.odellcorp.com](http://www.odellcorp.com)



Please recycle

