

JB Prince

THE WORLD'S FINEST CHEFS' TOOLS & EQUIPMENT



Pastry

Automatic Fondant Funnels (Sauce Guns)

All models are excellent for filling chocolates, making fondant candies, etc. Also great for rapid, precise dispensing of sauces, dressings, etc. on plates. Mechanisms can be easily removed for cleaning.



Italian All Metal Funnel

This funnel can be operated with one hand. Dispenser opening is 8mm (0.25"). With the filler tube it is 4mm. Stainless steel cone body and cast aluminum handle. Includes stainless steel stand. Replacement parts available. 8" diameter x 9" height. 2 quarts, 8 oz capacity.

U650



a



b

French Sauce Guns

Excellent tool for dispensing sauces, or filling chocolate molds quickly and precisely. Includes two interchangeable tips. All stainless steel. Made in France.

a. **U921** 1.5 liter capacity, with stand.

b. **U920** 1.9 liter capacity, **without stand**.



German Made Funnel

This funnel can be operated with one hand. 2 quarts capacity, 7" diameter x 9" height. Dispenser opening is 8mm (0.25"). With the filler tube it is 4mm (0.16"). Made of stainless steel and plastic. Dishwasher safe. **Stand sold separately.**

U523

Stand For Funnel

Stainless steel.

U523-B

Replacement parts available.



Kwik Sauce Gun

The funnel and mechanism are made of stainless steel with an ergonomic plastic handle. The outlet has a 7mm opening with adjustable flow. The stand is made of stainless steel wire and coated with silicone for non-slip stability. Can be dismantled for easy cleaning. 0.8 liter capacity.

Universal kitchen tool excellent for:

- Garnishing plates with sauces.
- Filling chocolate shells.
- Neatly and cleanly filling smaller vessels.

U939



Mini Automatic Fondant Funnel & Stand

Stainless steel cone & plunger; polycarbonate handle & release. 1 quart capacity, 4.75" diameter x 8.75" height. Plastic stand included. 8mm (0.31") & 4mm (0.16") openings.

U649

Plastic Pastry bags

Clear, professional quality, disposable or reusable, sanitary and very flexible. Can also be used as liners for cloth bags for easier cleaning. No more mess, no washing, no staining; extends the life of your more expensive cloth bags. 100 bags per dispenser box.

Softouch™ Pastry Bags

Blue Box. With a very supple "feel" for cake icing and any other cool to warm food. **Not for hot foods.**

B653-A 21" bags.

B653-C 16" bags.

Perfect™ Extra Strength Pastry Bags

Red Box. For use with hot or cold foods.

21" bags.

B653-100



Matfer Comfort Disposable Pastry Bags

An innovative rubber pastry bag material that has strength, flexibility, and softness. A smooth interior for easy outflow of piped products and a textured outside for superior grip. A specialized welded seam keeps the bag clean and durable. 20" bags.

B655



Export Cotton Pastry Bags

Our best, most durable bag for heavy, continuous use. Polyurethane-coated (5 layers), heavy cotton pastry bags with welded seam and reinforced bottom. This bag is boilable, impervious, and will not stiffen.

B601-12	12"	B601-20	20"
B601-14	14"	B601-22	22"
B601-16	16"	B601-24	24"
B601-18	18"		



Nylon Pastry Bags

Supple and flexible, these pastry bags are made of tough, impermeable nylon with fused seams. Made in Germany.

B781-12	12"	B781-20	20"
B781-14	14"	B781-22	22"
B781-16	16"	B781-24	24"
B781-18	18"		



Super-Flex Pastry Bag

A new innovative rubber pastry bag material that has strength, flexibility, and softness. A smooth interior for easy outflow of piped products and a textured outside for superior grip. A specialized welded seam keeps the bag clean and durable. 20" bags.

B995-45



Sac A' flex Silicone Pastry Bag

A high grade heat resistant silicone bag that is ideal for hot and cold items with a temperature range of -76 to 446 °F (-60 to 230 °C). Extremely easy to clean, dishwasher safe, and fast drying. A superb substitute for traditional canvas and plastic pastry bags. 18" bags.

B997

Decorative Tube Sets

51 assorted **nickel-plated** tubes plus 2 flower nails and plastic coupling. Includes plastic carry box for convenient storage and organization.
B603-A



26 assorted **stainless steel** tubes plus 2 flower nails and plastic coupling. Includes plastic carry box for convenient storage and organization.
B603-C



Stainless Steel Pastry Tubes

Seamless, straight sided. Use directly in bag. Openings range from 3.3mm to 19mm. **Order individually by specifying size from 0-9. Or order in sets of 10 by adding the letter "S" to the item number.**

- a. **B611** French Star.
- b. **B612** Plain.
- c. **B613** Closed Star.
- d. **B614** Star.

Our Finest 12 Piece Tube Sets

Rolled edge, made in Germany. 12 tubes ranging from 4mm to 15mm.

- | | |
|------------------------------|------------------------|
| e. Stainless Steel Tube Sets | f. Tinned Steel Sets |
| B686-A Plain tip. | B686 Plain tip. |
| B687-A Open star. | B687 Open star. |



Matfer Clear Plastic Pastry Tubes

These tubes are made from "polycarbonate" (super strong, clear plastic) so the tubes will not break, bend or rust. Tubes fit any bag. Box of 24 decorating tubes: 12 plain, 10 star, 1 number two leaf tube, & 1 tube for yule logs.

B833



12 Piece Large Tube Set

Assorted large tubes designed for mashed potatoes, cookie dough, butter cream, etc. **Stainless steel.** Seamless. Includes cleaning brush and plastic box.

- B615**
- B616** Cleaning brush (included with the set and sold separately).



a. St. Honore Tubes

Set of 3 stainless steel tubes with rolled edge and deep "V" cut for classic peaked style. Width of openings: 0.75", 1.19" & 1.5".
B952

b. St. Honore Decorative Tip

Strong, clear plastic (polycarbonate) with deep "V" for classic peaked style. 2.25" height, 0.5" diameter spout.
B805



Sultan Pastry Tips

These tips are used to for iced puff pastry. The finished shape is a round with a fluted exterior.

c. Protruding cone. Depression in the center. The French name for this tip is Douille Sultane Cône Dépassant.
B107

d. Flat cone. Hollow center. The French name for this tip is Douille Sultane a Cône à Ras.
B108



Basketweave Tip
1.06" opening length.
B809



Extra Fine Plain Tip
2mm opening.
B810



e. Nickel Plated Leaf Tips

B808-A 0.38"
B808-B 0.5"

g. Nickel Plated Bismark Tube

B806 2.88" height overall.

f. Nickel Plated Rose Maker Tips

B807-A 0.5"
B807-B 0.63"

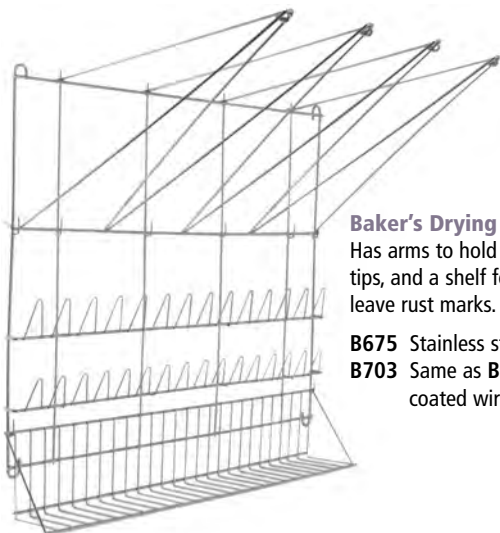
h. Nickel Plated Rose Nails

B672-7 1.5" diameter.
B672-13 2" diameter.



Delrin Coupling

Strong, rigid plastic. Allows you to quickly exchange tips.
B671



Baker's Drying Racks

Has arms to hold 4 bags, wire pieces for 28 tips, and a shelf for brushes. Will not rust or leave rust marks. 20" length x 20" width.

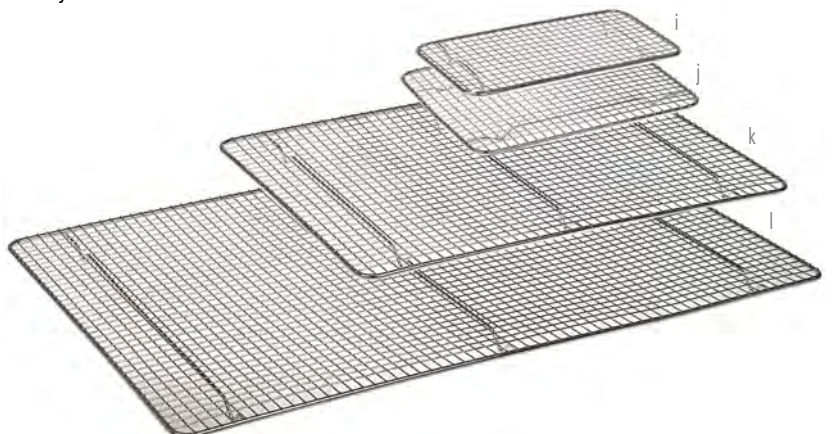
B675 Stainless steel.

B703 Same as **B675** but made with vinyl coated wire. **Not shown.**



Manual Glaze Sprayer

Simple, well-made and easy-to-use. European hand operated pump is used to spray glazes. Container can be microwaved to liquify product. Comes apart for easy cleaning. Holds 48 oz. 12" height.
B985



Bun Pan (Icing) Grates

High quality grates. Chromed steel wire grid on reinforced frame.

i. B964 One third size. 10" length x 5" width x 0.5" height.

j. B963 One quarter size. 10" length x 8" width x 0.5" height.

k. B965 Half size. 16.5" length x 12" width x 0.5" height.

l. B966 Full size. 24" length x 16.5" width x 1" height.



a. **Wide Mouth Plastic Squeeze Bottle**
Easier to fill. Made from food safe plastic. 8" height x 2.63" diameter, 16 oz capacity. **B825-16**

b. **Soaking Bottle**
Square bottle with perforated top. Ideal for moistening cake layers. Allows you to read measurements upright or inverted. 1000 ml or 38.8 fluid ounces. 11.5" height. **B953**



Fine Tip Squeeze Bottles

B824-05 3.5" height, 0.5 oz. **B824-6** 6.5" height, 6 oz.
B824-1 4" height, 1 oz. **B824-8** 6.75" height, 8 oz.
B824-2 4.25" height, 2 oz. **B824-16** 7.5" height, 16 oz.
B824-4 5" height, 4 oz.



Powdered Sugar Shakers

For powdered sugar, cocoa, cinnamon, etc. Stainless steel with mesh lid.

Asian-made with pressure hold cap. 3.75" height, 8 oz.

c. **B683-B**

European-made, all stainless steel with lock-top. 4.25" height, 10 oz.

d. **B683-A**

European-made, stainless mesh lock-top & see-thru plastic bottom. 4.25" height, 10 oz.

e. **B683-C**



Tapered Fine Tip Squeeze Bottles

X407-1.5 4.92" height, 1.5 oz. **X407-8** 7.2" height, 8 oz.
X407-3 5.5" height, 3 oz. **X407-16** 8.9" height, 16 oz.
X407-6.5 6.7" height, 6.5 oz.

Plastic Bowl Scrapers

Stiff (Matfer)

f. **B631** 4.75" length x 3.75" width.

Most flexible (Thermohausner)

g. **B632** 5.25" length x 3.5" width.

Medium (Thermohausner)

h. **B633** 4.75" length x 3.5" width.

i. **B634** 4.5" length x 3" width.

j. Silicone Bowl Scrapers

Silicone encapsulated spring steel provides rigidity and flexibility. Heat resistant to 600 °F. Made by iSi. 5.25" length x 3.5" width.

U930



Individual Cake Boards

Gold and silver foil laminated to white cardboard.

500 pieces per package.

k. **B942** 4" diameter, without tab.

l. **B941** 3.25" diameter, with tab.

m. **B940** 3.25" diameter, with tab (silver).





a. Strudel Roller (Bear Claw Cutter)

Stainless steel with wood handle.
Cuts 2.5" lines in dough. 7" overall.
T263

Pastry Wheels

Nickel plated with wooden handle.
2" diameter x 7.5" length.

b. **B690** plain.

c. **B691** fluted.

d. Large Pastry Wheel

Stainless steel wheel with plastic handle.
4" diameter, 9" overall length.
B780



Plastic Pastry Brushes

Meteor brand brushes. Bristles are molded directly into handle eliminating spaces for bacteria growth. Molded hook for hanging on pot rim or for elevating bristles when lying on work surface. Plastic handle and boar bristle.

e. **B834-2** 2" width.

f. **B834-3** 3" width.



Natural Pastry Brushes

Heavy duty pastry and grease brushes. Pure boar bristle in epoxy ferrules for longer life and better sanitation. Wood handles. Round brush is domed.

B606-1 1" width.

g. **B606-1.5** 1.5" width.

h. **B606-2** 2" width.

B606-3 3" width.

i. **B606-4** 4" width.

j. **B606-12** round head, 12" overall length.



Oxo Silicone Pastry Brush

Heat resistant up to 600 °F and easy to clean. Center bristles have holes designed to hold liquid for transport and spreading. 8" length.

B696

k. Bench Brush

6 rows of soft natural white bristles set in plastic for fast, easy brush up. 9" width x 3.75" height x 1.75" thick, with 2.25" bristle.

B821

Bench Scrapers

Stainless steels. 6" length x 4.5" width.

l. **B635** Wooden handle.

m. **B635-PL** "sure grip" plastic handle.

Pastry Cutters

Flexible bench scrapers with a round handle for comfort. An invaluable utensil for a chef that can be used for pushing ingredients thru a sieve, transferring mis en place or portioning dough. 4.3" length x 4.5" width.

n. **U962** Plastic.

o. **U961** Stainless steel.



Silpat Non-Stick Baking Mat

Thick flexible mat transforms any sheet pan into a non stick surface. Also used for working sugar, chocolate, etc. Can be reused thousands of times, withstands temperature from -40 to over 550 °F.

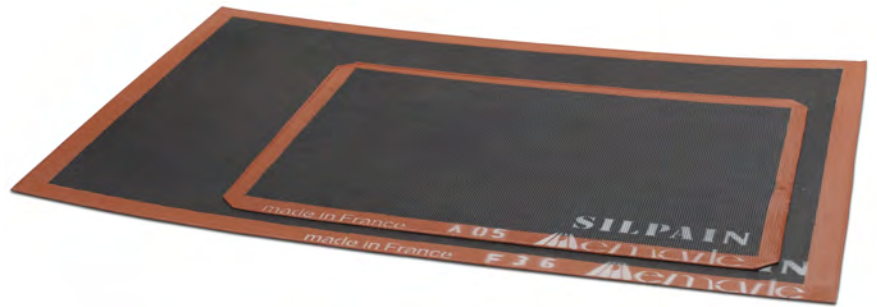
- B711** Quarter-size. 11.5" length x 8" width.
- B706** Half-size. 16.5" length x 11.75" width. Fits standard half-sheet pan.
- B705** Full-size. 24.5" length x 16.5" width. Fits standard US sheet pan.
- B710** Large-size. 30" length x 22" width. Ideal as a work surface.



Silpain Non-Stick Bread Baking Mesh

Open mesh with silicone coating for better air circulation, quicker baking. Black surface aids browning. Excellent for frozen or fresh dough. Re-usable thousands of times, easy-to-clean. Withstands -40 to 550 °F. Best used with perforated sheet pan or wire rack.

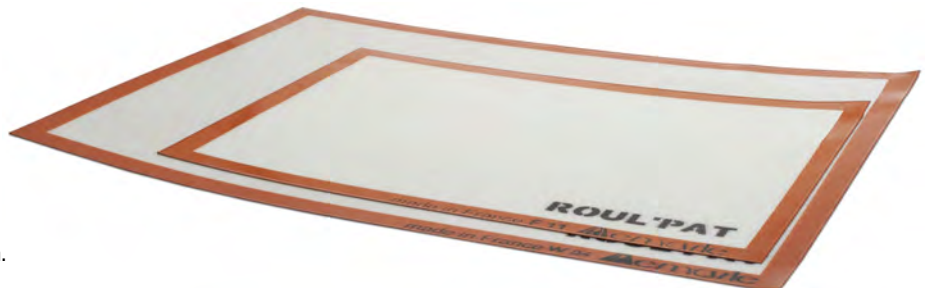
- B708** Full-size. 24.5" length x 16.5" width.
- B709** Half-size. 16.5" length x 11.75" width.



Roul Pat Non-Stick Worksurface
From the Makers of Silpat

Non-stick mat used as a work surface to roll out or knead dough, gum paste, fondant, sugar or chocolate. Works like Silpat but is coated with silicone on **both** sides so it won't slide. Oven safe to 500 °F.

- B712-A** Full size. 25" length x 16.5" width.
- B712-B** Oversized for work surfaces. 31.5" length x 23" width.



Non-Stick Baking Sheet

Thin sheet coated on both sides with Teflon. Reusable 200 times. Nothing sticks. Just wipe clean. Fits standard U.S. sheet pan. 23.5" length x 16" width.

- B707**



P



Silform Flexible Bread Baking Forms

From the makers of Silpat, these non-stick forms make bread baking easier and better. The forms are made of silicone coated mesh. They are non-stick, perforated for better heat flow, and retain their shape permanently. Can go directly from freezer to oven (up to 550 °F). Should be placed on a sheet pan, preferably perforated, when baking. Fits in standard U.S. sheet pan. 25" length x 17.5" width. NSF approved.

Baguette

M457-A 5 loaves, each measure 25" length x 3.5" width x 1.25" height.

Individual Loaves

M457-B 10 loaves, each measure 12" length x 2.75" width x 1.25" height.



Flexipat Non-Stick Pan Liner

Flexipat is a silicone pan liner that helps you create even, clean edge layers. It has a temperature range of -40 to 536 °F making it ideal for frozen and baked applications. An excellent tool to have when creating formed and layered deserts. 25" length x 15" width x 0.38" height.

B714



Silicone Pan Liners

These flexible silicone liners, with clean 90° corners will allow you to spread layers of sponge cake, mousse or fruit jelly quickly and evenly. These forms can be easily baked or frozen with a temperature range of -7 to 446 °F. Ideal for creating even layers, roulades, and other formed preparations.

B998-A 16.75" length x 13.75" width x 0.33" height.

B998-B 21.25" length x 13.75" width x 0.33" height.



Pavoni SPV Fleximat

Fleximats are a flexible silicone mat that transforms US sized full sheet pans, or counter tops into a non-stick surface. Fleximats are double sided and can be used for working with sugar, chocolate, etc. it can be reused and withstands temperatures between 450 °F. One side's border is conveniently marked with inch increments to help you with spacing and portioning. 24.5" length x 16.5" width.

B789

a. Metal Cake Markers

Very strong for cakes as well as frozen desserts, 12" diameter in stainless steel.

B628-10 10 portions.

B628-12 12 portions.

B628-14 14 portions.



b. Plastic Cake Markers

2 patterns, one on each side of the marker.

Very strong plastic, 10" diameter.

B627-A 12 & 16 portions.

B627-B 14 & 18 portions.

c. Lattice Dough Cutter

Cut lattice pattern into dough easily with this well-made plastic stencil/cutter. 12" diameter.

B629



d. Lattice Dough Rollers

Roll over dough and pull apart for quick, easy effect. Excellent for pies or puff pastry. Blades cut 4".

B652 Stainless steel and wood handle.

B715 Same as above in plastic.



Dough Dividers

Adjustable dough dividers with lock & stainless steel wheels. Cut strips from 0.5" to 5" across.

e. Extra strong frame & lock. Made in Europe. Five 2" diameter wheels.

B842

f. Ten wheel, 5 plain edge & 5 scalloped edge.

B843

g. Five 2" diameter wheels.

B604

h. Same as **B842** except it has seven wheels.

B842-7

Multiple Disc Cutter

For cutting bread sticks, brownie dough, cookies and other baked products. Stainless steel construction. Plastic handles. Each roller cutter is movable so user can customize spacing.

i. Stainless Steel Rod

30" plus plastic handles **Does not include roller cutters. Order cutters separately.**

B918-30

j. Sharpened Roller Cutters

4.25" diameter with shoulder rivet for easy change in spacing.

B919





a. Rolls of Heavy Clear Acetate

The plastic used is food-safe polystyrene. Acetate roll for cakes and dessert wraps or as mold liners. 500 ft. per roll.

	H
B860-1.38	1.38"
B860-1.75	1.75"
B860-2	2"
B860-2.38	2.38"
B860-2.5	2.5"
B860-3	3"

b. Acetate Strips

The plastic used is food-safe polystyrene. For lining dessert molds. Makes removal easier. 1,000 strips per package.

	L	H	USE WITH RINGS OF MAXIMUM Ø
M435-1	6.5"	1"	2"
M435-1.5	9.5"	1.5"	3"
M436-A	8"	1.5"	2.5"
M436-C	9.75"	1.75"	3"
M436-D	9.75"	2.33"	3"
M436-E	9.75"	2"	3"

Acetate Sheets

The plastic used is food-safe polystyrene. Excellent for chocolate work. Easy to handle. Shiny surface. Won't dull finish of chocolate. Non-stick. Each sheet is 24" length x 15.88" width. Packed 100 to a carton.

B861-100



Polyethylene Sheets

Soft and flexible plastic. Excellent for chocolate work. Packed 100 sheets per bag. Each sheet 23.5" length x 15.75" width. **B864**



Parchment (Easy Release) Paper Sheets

Quilon coated parchment for baking trays, piping bags, and cooking "en papillote". 24.38" length x 16.38" width. 1,000 sheets per box.

B900

Kosher Approved.



Cannoli Form

Stainless steel.

B617 Small. 3.5" length x 0.5" width.

B618 Large. 5.5" length x 1" width.

B619 Mini. 8" length x 0.38" width.



Cream Roll Horn

Stainless steel.

B623 Large. 6.5" length x 1" width x 0.75" diameter.

B622 Small. 5.25" length x 1" width x 0.5" diameter.



Cornet Molds

Tinned steel. One end sealed.

B882 Large. 2" opening diameter x 5.5" length.

B881 Small. 2" opening diameter x 3.5" length.



Ladylock Form

Stainless steel.

B621 Large. 6.5" length x 2" width x 0.25" diameter.

B620 Small. 3.5" length x 1.5" width x 0.25" diameter.



Oven Safe Cone Form

Oven safe. Withstands temperatures up to 390 °F (-200 °C). 5.5" length, 1.5" at the top.

B999



Kali Apple Peeler

European made machine that peels, slices and removes the core in one operation. The famous KALI is made of stainless steel blades and gear parts contained in a strong cast aluminum body. Made in France. 13" length x 5" height. Includes table clamp.

B637

9-B637-1 Replacement slicing blade - "L" shape.

9-B637-6 Replacement peeling blade - round.

Other parts are also available, please inquire.



Pastry Filling Machine

Sturdy design for uniform filling of donuts, eclairs, etc. Easy to clean, 2 liter stainless steel hopper.

B651

For replacement parts, please inquire.

Side Arm Display Stands

For beautiful presentation of cakes and other desserts. Also excellent for window or buffet with fruit, cheese, or pastry. Arms are adjustable to any position. Very strong European construction of anodized aluminum plates, chromed steel post and sturdy metal base.

a. Four Tier Stand

Plate sizes: 6", 8", 10", 12". Posts: 3.25" height. 14.5" overall height.
R117-A

c. Six Tier Stand

Plate sizes: 2 each 8", 10", 12". Posts: 6.5" height. 42" overall height.
R117-B

b. Six Tier Stand-Half Height

Plate sizes: 2 each 8", 10", 12". Posts: 3.25" height. 22" overall height.
R117-C



Cake Stand Cutter (For Posts)
Cutter for central post. Stainless steel. 1.75" diameter x 4" height.
R116-X



3 Tier Rectangular Stand

Strong anodized aluminum plates with chrome steel posts. Perfect for display table riser. Has three rectangular, anodized aluminum plates (16.75" length x 10.5" width, 19.5" length x 11.5" width, 22" length x 12.5" width) and 6.5" chromed steel posts. 18" overall height.
R120-3



Multi-Tier Cake Stands

Strong anodized aluminum disks, and chromed steel posts on metal feet make these stands much more stable than plastic displays. 6.5" between disks.

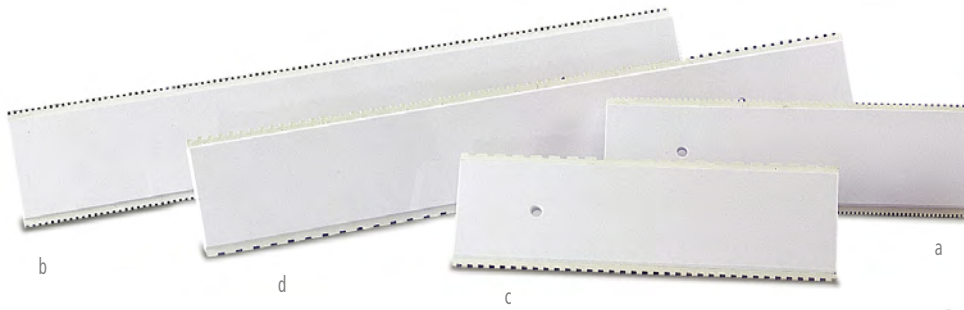
Five Tier Wedding Cake Stand

Plate sizes: 8", 10", 12", 16", 18", 30" overall height.
R116-A



Seven Tier Wedding Cake Stand

Plate sizes: 6", 8", 10", 12", 16", 18", 20", 44" overall height.
R116-B



Decorating Combs

Plastic combs with different grooves on each side.

- a. B846-A 14" overall length.
- b. B931 28" overall length.
- c. B846-B 14" overall length.
- d. B932 28" overall length.

e. Charlotte Bisquit Comb

Plastic comb with different grooves on each side. One side makes dome design, the other pyramid design. 28" overall length.

B847

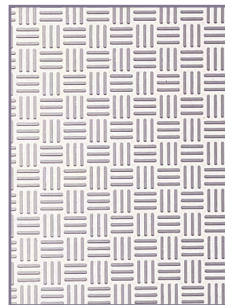


Decorating Stencil Grills

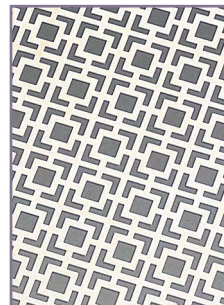
For the preparation of decorative designs from chocolate, sugar paste, biscuit dough, etc. 23.25" length x 15.33" width.



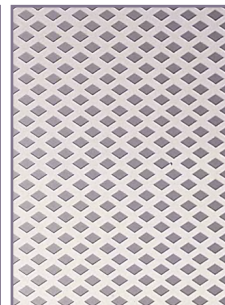
Polka Dot
B850-A Plastic.



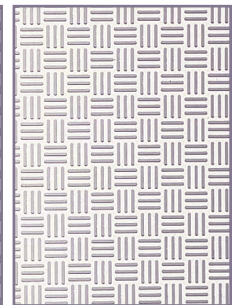
Checkerboard
B850-C Plastic.



Chinese Screen
B850-D Plastic.



Diamonds
B850-F Plastic.



Basket Weave
B850-J Plastic.

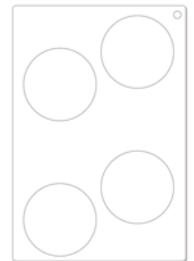
Culinary Templates

Made from food safe plastic. **Not for oven use.** All 15.5" length x 10.5" width except B975-B, which is 11.88" length x 7.88" width.

	DESCRIPTION	L	W		DESCRIPTION	L	W
k.	B975-B Spoons	5.13"	1.25"	h.	B870-Y Zig Zag	-	-
b.	B870-Z Large Circles	4.38"	4.38"	i.	B870-X Tart Bands	12"	1.06"
c.	B870-I Spoons	6"	1.25"	j.	B870-N Butterflies	3"	2"
d.	B870-P Strips	8"	0.88"	a.	B870-D Small "L" Shapes	6.13"	3.75"
e.	B870-Q Circles	3"	-	l.	B981-B Swoosh	5.13"	1.75"
f.	B870-S Triangles	5"	2"	m.	B981-I Triangle	5.63"	0.75"
g.	B870-U Spoons	4.75"	1"	n.	B981-J Wave	9.5"	0.75"



k. B975-B



b. B870-Z



c. B870-I



d. B870-P



e. B870-Q



f. B870-S



g. B870-U



h. B870-Y



i. B870-X



j. B870-N



a. B870-D



l. B981-B



m. B981-I



n. B981-J

Tear Drop Shape Offset Palette Knives

Stainless steel head and plastic handle. These offset palette knives have a flexible head ideal for decorating and plating small delicate items. Hand wash only.

- a. **B103** Tear drop shape. 8.75" overall length.
- b. **B104** Diamond shape. 9" overall length.

Flexible Palette Knives

Stainless steel blades, wood handles.

- c. **B828** Tapered offset. 4.75" x 2.5" blade, 8" overall.
- d. **B786-A** Offset. 4.25" blade, 8.25" overall.
- e. **B786A-PL** Same as above but with plastic handle.
- f. **B786-B** Flat, 4" blade, 8" overall.

g. Baker's Blade

For scoring baguettes or other breads. Stainless steel blade, plastic handle and cover, 5" length. **B866**

h. Deglon Offset Flexible Spatulas

Extra flexible blade. Stainless steel and plastic handle.

- B906-29** 11.5" length. 1.5" blade.
- B906-24** 9.5" length. 1.5" blade.
- B906-19** 7.5" length. 1.5" blade.
- B906-15** 6" length. 1.38" blade.

i. Deglon Small Flexible Spatula

4.5" blade, plastic handle. **B991**

j. Victorinox Palette Knife

4" blade, plastic handle. **V803**

k. Deglon Extra Long Spatula

Flexible, stainless steel blade with plastic handle. 15.5" blade (13" straight edge) 1.5" width. 20" overall. **B970-40**

l. Offset Spatula with Stiff Blade

Short, stiff blade for spreading or smoothing. Stainless steel, plastic handle. 6" blade, 1.25" width, 12" overall. **B986**

m. Victorinox Flexible Offset Handle Spatulas

Wood handles.

- V808-10** 10" length blade, tapered 1.25" to 1.5" width.
- V808-12** 12" length blade, tapered to 1.5" to 1.63" width.

n. F. Dick Offset Spatula

Stainless steel blade, polypropylene handle. Most flexible. 10" length blade, 1.38" width. **D916**

o. Ateco Offset Spatula

Stainless steel blade, plastic handle. 9.75" length x 1.5" width. **B831**

p. Victorinox Flexible Spatulas

Wood handles.

- V806-10** 10" length blade, tapered 1.25" to 1.5" width.
- V806-12** 12" length blade, tapered 1.5" to 1.75" width.



L: length W: width (T: top, B: bottom) D: depth H: height C: capacity Ø: diameter



Victorinox Bread Knives

- a. **V836-10** 10" blade, wood handle.
- b. **V837-8** 8" blade, wood handle.
- c. **V836-10PL** 10" blade, plastic handle.
- b. **V837-8PL** 8" blade, plastic handle.



Victorinox Serrated Knives For Cake

- e. **V820-14** 14" blade, wood handle.
- f. **V820-12** 12" blade, wood handle.
- g. **V820-14PL** 14" blade, plastic handle.
- h. **V820-12PL** 12" blade, plastic handle.



Wusthof Confectioners Knife/Super Slicer

Reverse serrations to reduce tearing. 10" blade. Plastic handle.
W484



Matfer Kitchen Spoons

Reinforced fiberglass. Withstand high heat up to 430 °F. Dishwasher safe. Non-absorbing.

- U704-12** 12" length.
- U704-15** 15" length.
- U704-12R** 12" length. Red.
- U704-18** 18" length.



Extra Long Serrated Knife

15.5" stainless steel blade, wood handle. 22.5" overall. For cutting large cakes.
Z107

Spatulas and Spoonulas

- i. Rubbermaid Original, flat blade
U546-9.5 9.5" length. **U546-12** 12" length.

Rubbermaid Heat Resistant up to 500 °F. Red handle, with non-slip hook

- j. Spoonula, cupped blade **U599-9.5** 9.5" length. **U599-13** 13" length.
- k. Original, flat blade (notched) **U598-9.5** 9.5" length. **U598-13.5** 13.5" length.

l. Heat Resistant up to 600 °F (316 °C). Flat, red handle.

- U835-10** Original, flat blade. 10" length.
- U835-14** Original, flat blade. 14" length.

m. Exoglass Rigid Spatulas

Reinforced plastic is strong and heat resistant up to 430 °F. Dishwasher safe. Can be sterilized. Flat, bevelled spatula 13.75" length.
U584

n. Flat, round end spatulas.

- | | | | |
|----------------|-----|----------------|-----|
| U585-10 | 10" | U585-16 | 16" |
| U585-12 | 12" | U585-18 | 18" |
| U585-14 | 14" | U585-20 | 20" |

o. Beechwood Spatula

From France.

- | | |
|----------------|-----|
| U811-30 | 12" |
| U811-40 | 16" |
| U811-45 | 18" |

p. Beechwood Spoon

From France.

- | | |
|----------------|-----|
| U812-30 | 12" |
| U812-40 | 16" |
| U812-45 | 18" |





a. Dessiccant & Indicator Cards

20 one third ounce packets of moisture-absorbing agent and 6 relative humidity indicator cards.

B695

b. Food Color Set

10 one ounce jars of Chefmaster gel base food colors includes: sky blue, leaf green, sunset orange, scarlet red, Christmas red, rose pink, violet, lemon yellow, nut brown, black.

B694



c. Double Bulb Sugar Pump

Has an extra bulb to regulate the supply of air to the sugar, making it easier to control the shape of the object. Comes with one copper tip.

B646-F



d. Chocolate Dipping Fork Set

6 piece set in stainless steel. Comes packed in a sturdy plastic box. 8" length.

B650



e. Chocolate Dipping Fork Set

4 piece set, stainless steel.

B989



f. Chocolate Dipping Fork Set

10 piece set. Sturdy stainless steel with wood handles. 8" length.

B677



g. Petit Four Dipping Set

4 piece set. Sturdy stainless steel with wooden handles. 8" length.

B677-A



h. Marzipan Modeling Tools

High quality plastic, very fine detail. The best professional tools for crafting marzipan animals, figures and decorations. Set of 12 tools from 4.75" to 5" length.

B610

P



Syrup Holder

Stainless steel for use with densimeter.
1.5" diameter x 7.5" height.
U527-B



Sugar Densimeter

Measures the density of sugar syrup.
5.5" length.
U527-A



Sugar Density Refractometers

Easy-to-use, professional tools measure the concentration of sugar.
5 year limited warranty from manufacturer.

a. **U779** Uses 0-80 BRIX scale (full range).

b. **U670** Uses 0-32 BRIX scale (for sorbets).



Polder Clock, Timer & Stopwatch

Large, easy to read digital display. 12/24 hour clock function. Time up to 10 hours/Count-up to 24 hours. 36" length carrying strap. Magnet on back for wall mounting. Battery included.
U784



c. **Low Cost Refrigerator & Freezer Thermometer**

Hangs from rack. Range: -40 to 120 °F, -40 to 50 °C. Uses alcohol, not mercury. NSF approved.
U724



d. **Compact Oven Thermometer**

Hangs or stands. Easy to read, bold numbers. 200 to 500 °F, 100 to 280 °C. NSF approved.
U721



e. **Minute and Second Timer**

Built-in, last-number memory. Maximum 99 minutes, 59 seconds. Clear beeper. Magnetic clip and stand. Battery included.
U830



f. **Waterproof Timer**

Instrument Range: 100 minutes. Counts up and down. Last count recall. magnet mount and stand. Batteries included.
U849



Oxo Digital Leave in Thermometer

- Provides pre-set temperatures for 9 types of meat, poultry and fish.
- Choose either USDA or chef recommended temperature for optimal taste.
- Cord and probe nest inside base for easy storage.
- 10-degree warning alert prevents overcooking.
- 2 AAA batteries included.

U941



Electronic Timer, Clock and Thermometer

Magnetic back with 3 foot stainless steel wire and probe. Range from 32 to 392 °F. Battery included.

g. **U832** Polder.

h. **U729** Cooper.



Pocket Thermometers

Stainless steel chef's pocket thermometer. Accurate adjustable reading from 0 to 220 °F. 1" diameter dial, 5" length.

- a. **U504** Taylor Bi-Therm.
- b. **U504-B** Comark.

High Temperature Pocket Thermometer

Stainless steel housing. Range from 50 to 550 °F. 1" diameter dial, 5" length.

- c. **U847**



Digital Pocket Thermometers

Wide range, precise adjustment make these excellent instruments for all purposes, including chocolate. 7" length, batteries included. NSF approved.

- Fine Tip, wide range: -40 to 450 °F (40 to 232 °C) (Taylor).
- Adjustable preset alarm.
- Water-proof.
- Min/Max hold feature.
- Excellent for testing dishwasher rinse temperature.
- Reduced tip diameter for delicate foods.

- d. **U651**

e. **U505-C** Standard: -58 to 300 °F (-50 to 150 °C) (Comark).

f. **U105** Classic: -58 to 300 °F (-50 to 150 °C) - ON/OFF Switch (Taylor).

- Fine Tip, wide range: -40 to 450 °F (40 to 232 °C) (CDN).
- Auto off after 10 minutes.
- Water proof.
- Date hold.
- Pocket clip and lanyard for holding.
- Reduced tip diameter for delicate foods.

- g. **U845**

Spatula with Thermometer

Designed to mix products like cream, sauces, sugar and chocolate in a pan, electric warmer, or chocolate dipping machine, while looking at the temperature with the same tool. The composite material Exoglass spatula resists temperatures up to 200 °C and is dishwasher-safe. Removable thermometer for temperatures between -58 to 392 °F (-50 to 200 °C). Watertight. Do not put thermometer in dishwasher.

U978



Metal Cage Candy Thermometer

U526 80 to 200 °C. **Centigrade only.** 12" length.

U526-R Replacement thermometer. Fits into metal cage.



Holder for U526 Thermometer

Attaches to pot and clasps onto thermometer. Stainless steel.

U526-H



Chocolate Tempering Thermometer

For chocolate tempering. Durable laboratory glass. Non-mercuric column. Protective case. 40 to 130 °F. 11.75" length.

U787



Confection Thermometer

Stainless steel and plastic construction with pot clip on back. 100 to 400 °F (40 to 200 °C). 12" length.

U505-B

L: length W: width (T: top, B: bottom) D: depth H: height C: capacity Ø: diameter



Digital Type K Thermometer

This thermometer has a splash resistant sealed membrane keypad, making it ideal for environments where liquids are used and easy to clean up. It has a minimum/maximum feature that will provide you with the lowest and highest temperatures that have registered during the thermometer's use.

A hold function allows you to lock in a temperature reading for easier viewing and reads in both Celsius and Fahrenheit. The unit has a protective rubber sleeve that also acts as a tabletop stand. **It accepts a "K" type probe that is not included.**

U840

Temp. Range: -418 to 2501 °F (-250 to 1372 °C).

Power Source: 4 AAA batteries (included).

Dimensions: 5" length x 2" width x 1" height.

Warranty: 3 years from manufacturer.

Hypodermic Probe with Type K Connection*

An ultra fine probe designed for penetrating soft or semi-soft materials with minimal intrusion. Great for sous-vide applications and can be used with any thermocouple thermometer that accepts type "K" connection probes. 6 month warranty.

U841

Type: K.

Temp range: -418 to 600 °F (-250 to 315 °C).

Probe length: 2.5".

Diameter: 0.035".

Cable length: 2.5 feet.

***Probe should not be submerged in water.**



Armored Cable Probe with Type K Connection*

This probe is designed for penetrating soft or semi-soft materials. Can be used with any thermocouple that accepts type "K" connection probes such as **U840**.

U842

Temp. range: -418 to 700 °F (-250 to 315 °C).

Probe length: 4".

Cable length: 4 feet.

***Probe should not be submerged in water.**



Type K Hypodermic Probe for Sous Vide

An ultra fine 2.5" probe designed for penetrating soft or semi-soft materials with minimal intrusion. It has a 40" teflon coated cable that is heat resistant to 450 °F. Great for sous-vide or any applications that require delicate work. It can be used with any thermocouple thermometer that accepts type "K" connection probes. Probes should not be used while fully submerged in liquid.

U980

Microneedle With Cable - Type K Connection

This type "K" thermocouple probe has a coil style cord that can extend to 48". The probe has an overall length of 3.5", with the last inch tapering down to a fine tip. The maximum temperature of the probe is 500 °F (260 °C) and the cord's maximum temperature is 176 °F (80 °C).

U789

Folding Thermocouple Thermometer

- Instrument Range: -58 to +572 °F/-50 to +300 °C
- NSF Certified.
- 3 second response.
- 1,5 mm reduced tip.
- Backlit in blue.
- 4.25"/10,8 cm probe.
- Recalibratable.
- Water resistant.
- Shatterproof.



U975 White.

U975-G Green.

U975-R Red.



Digital Probe Thermometers

a. Good value. Removable probe with 20" connecting cord. Water resistant. -40 to 260 °C and -40 to 500 °F. 7" length.

5 year warranty. 1 year warranty on probe.

U786

b. Top of the line, precision instrument specifically designed for harsh conditions. Water tight. -40 to 260 °C and -40 to 500 °F. 2.25" width, 6.5" length.

32" connection to probe. 5 year warranty. 1 year warranty on probe.

U780

Laser (Non-Contact) Thermometers

Infrared laser measures surface temperature at close range and at distances of many feet.

c. Laser Scanner

Ranges: -4 to 518 °F, -20% to 270 °C. 8" length. Powered by 9 volt battery (included). Five year warranty from manufacturer.

U783-A

d. Cooper Laser Scanner

Ranges -25 to 400 °F, -30 to 204 °C. 7.5" length. Powered by 9-volt battery (not included). 1 year warranty from manufacturer.

U782

e. Food Safety Laser/Probe Thermometer

A non contact infrared (IR) and probe thermometer all in one unit. The IR portion has a temperature range of -30 to 525 °F (-35 to 275 °C). The probe has a temperature range of -40 to 390 °F (-40 to 200 °C). It is designed to support HACCP monitoring systems. The unit includes a canvas belt sheath and 9 volt battery. 1 year warranty from manufacturer.

U902



CHOCOLATE



Chocolate Tempering Machine Commercial

A simple way to melt, temper and hold chocolate. Hot air melts chocolate and then maintains it at a proper temperature. A digital display (in Celsius only) and a thermostat offers temperature range of 20 to 60 °C. The stainless steel frame is insulated for efficiency and temperature regulation. Easy to remove and clean stainless steel pan with a 26 pound (12 kg) capacity. This machine can also be fitted with stainless steel probe (item number **P394-P**, sold separately) for a more accurate temperature reading. Made in France. 110 volts, 300 watts, heat source is electric coil. **P394**

Probe for P394 Chocolate Tempering Machine Commercial

This probe works in cooperation with chocolate tempering machine (**P394**). It conveniently hooks up to the machine and allows you to read the actual temperature of your melted chocolate in the digital display rather than the machines set air temperature. **P394-P**



MeltinChoc Chocolate Melter

This chocolate melter/warmer has an accurate thermostat that enables you to melt and maintain chocolate in a tempered state. The outer construction is thermo-resistant plastic, with a removable stainless steel pan. **P112-9**

Motor: 110 volts, 200 watts.

Temperature range: 0 to 140 °F (0 to 60 °C).

Capacity: 9 liters, 9.5 quarts.

Dimensions: 17" length x 15" width x 5.5" height.



Table Top Chocolate Temperer

Thermostat controlled heat unit melts up to 8 lbs of chocolate. Cooling fan, one stainless steel bowl and plastic scraper included. **P110**

Motor: 110 volts.

Dimensions: 12.5" height x 14.25" width.

Warranty: Six month warranty from manufacturer.

P110-B Extra Bowl. Stainless steel.

P110-S Extra Scraper. Plastic.



Chocolate Sprayer

Turbine powered system for high air volume and low pressure. The result is a finer spray with less overspray. The nozzle on the hand gun has adjustable pattern size (0.25" to 6"), 3 different shapes, and adjustable air size. Great for showpiece and production work. 115 volts, 10 amp, 15 foot hose. **P240**



Extra Spray Can P240-A



Airmaster Air Brush

This classic air brush is lightweight, dependable, quiet and easy to use. The airbrush is 5.5" length and made of nickel plated brass. The compressor operates on 110 volt with adjustable air pressure. **P237**

L: length W: width (T: top, B: bottom) D: depth H: height C: capacity Ø: diameter

Confectionery Cutters - "Guitars"

Precision-made stainless steel apparatus cuts squares, rectangles, triangles and diamond shapes in ganache, marzipan, nougat, caramel, jellies, chocolate fillings, pastries, petit fours etc. Strong platform and frames guarantee clean, precise cuts. Indispensable to confectionery production.

7.5mm Guitar

Three interchangeable cutting frames: 15, 22.5 and 30mm width; one stainless steel tray, one extra roll of wire, appropriate allen keys, screws, tools. Base is 15" square with 7.5mm spacing. **B700**

B700-7.5 7.5mm cutting frame.

B700-37.5 37.5mm cutting frame.

5mm Guitar

Same style as above except for size of spacing. Four interchangeable cutting frames: 10, 15, 20 and 25mm width; one stainless steel tray. One extra roll of wire, appropriate allen keys, screws, tools. Base is 15" square with 5mm spacing. **B701**

B701-5 5mm cutting frame.

B701-30 30mm cutting frame.



Mini Confectionery Guitar for Ganache

This mini confectionery guitar is the ideal solution for small restaurants, schools, and chocolate shops. It offers the same time saving, precision cuts as a traditional sized confectionery guitar, without the same commitment to space. The guitar is constructed with a solid plastic base and stainless steel 22mm cutting frame. It also includes a stainless steel plate and plastic scraper to help rotate products on the cutting surface of the guitar. This frame set works well in cooperation with **B101**, mini leveling frame set. Base is 10" length x 11" width. 18.5" length x 12.5" width x 5.5" height overall. **B102**

B102-15 15mm cutting frame.

B102-30 30mm cutting frame.



Mini Double Confectionery Guitar

The mini double guitar has all of the advantages of the single frame unit, with the added benefit of increased efficiency. You no longer need to rotate your product on the cutting surface. This saves you time and reduces the risks associated with handling your product too much. This guitar works well in cooperation with **B101**, mini leveling frame set. Base is 10" square. 19" square x 7" high overall.

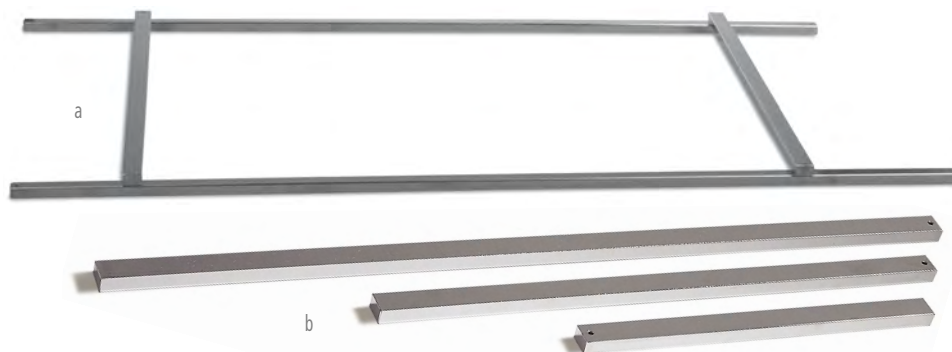
B109-22 22mm frame.

B109-30 30mm frame.

Mini Ganache Leveling Frame Set

This frame set allows you to make uniform layers of chocolate ganache, fruit gels, and caramels. The frames are an ideal size at 9.5" square (24 cm) for smaller restaurants and pastry programs. The kit includes a solid base of 13.4" length x 12.5" width x 1.5" height, four frames, and leveling scraper. Two 3mm frames and two 5mm frames which allow you to make uniform alternating layers. This frame set works well in cooperation with Mini Confectionery Guitar (**B102**). 9.5" square. **B101**

B101



a. Confectionery Ruler Set

Chromed steel rods, 0.63" x 0.38".
4 piece set consist of: 2 pieces 31" length,
2 pieces 20" length. **B682**

b. Confectionery Rules (sold individually)

Chromed steel rods, 0.63" width x 0.38" height.

B951-9.5	9.5"
B951-15	15"
B951-22	22"



Zabaglione Bowl
Thick gauge copper with brass handle, 8" diameter.
U509



Copper Sugar Pots
Heavy copper sugar boiling pots. Made in France.
U528-12 5" diameter. 24 oz.
U528-16 6.25" diameter. 50 oz.
U528-20 8" diameter. 3 qts.



Sugar Lamp
Specially built 24" neck on weighted base. Neck is extra firm. Will not sag. Includes infra-red (heat) bulb.
B693



Aluminum Rolling Pins
Heavy duty with special bearing for smooth operation. Aluminum handle. 18" length roller, 3.5" diameter.
B887-18



Hardwood Rolling Pins with handles
Finest quality, full length steel rod & bearings.
B638-A 15" length x 3.5" width (25" overall).
B638-B 18" length x 3.5" width (28" overall).



French Hardwood Rolling Pin
B640 19.75" length x 1.75" width.
Tapered Rolling Pin
B641 21" length.



Hardwood Rolling Pin
B639 20" length x 2" width.
Thin Hardwood Rolling Pin
B886 18" length x 1.25" width.

Croissant Cutters

Best quality professional cutters. Stainless steel blades, large plastic handles, heavy duty steel rods for continuous production.

- a. **B624** Cuts 4" x 8" triangles (classic French size) and makes slit at wide end for easy shaping.
- b. **B624-B** Cuts 4.5" x 6" triangles for small croissants.
- c. **B624-E** Cuts 3 triangles simultaneously, each measuring 5.5" x 6.75".
- d. **B624-C** Cuts 5.5" x 6.75" triangles.



Roller Dockers

- a. **B716** Heavy duty plastic, 4" roller.
- b. **B967** Plastic and stainless steel. Sharp points. 5" width track.
- c. Aluminum points, metal frame and wood handle. **B676-A** 4" width roller



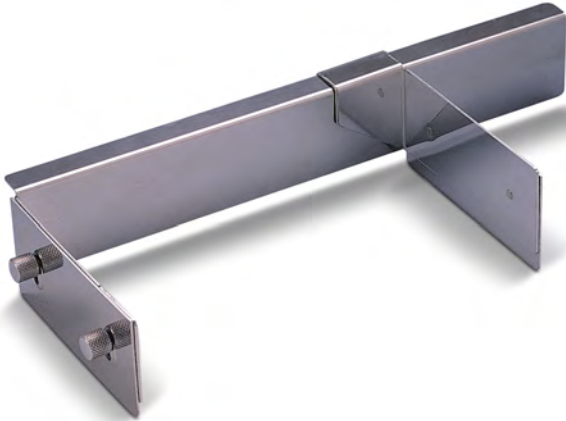
a



b



c



Adjustable Spreading Tools (Raplette)

Ideal for smoothing and levelling dough or chocolate. Heavy stainless steel construction. Adjusts from 2" to 16" width. Spreads from 0.03" up to 0.5" thick. **B910**



Basketweave Rolling Pins

Molded plastic surface gives flatter design. Rolling pin is easier to use and clean. **B820** 2.5" diameter x 10" length.

Plastic discs are individually mounted on pin for very clear definition. **B645** 1.5" diameter x 8.5" length.

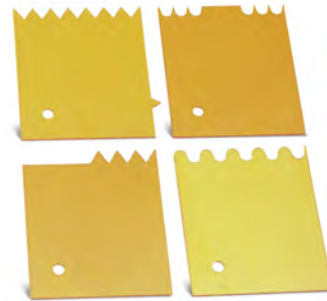


Wood Grain Tool

For making wood grain designs on chocolate. Perfect for "Buche de Noel" and other cakes. Made of food-safe rubber.

B905-10 4" length.

B905-15 6" length.



Cake Decorating Combs

Set of 4 in easy-to-see orange plastic.

B647



Plastic Chocolate Comb

8.5" length.

B871



Decorating Comb 3 Teeth Sizes

This three sided comb offers a quick easy way to decorate cakes and other foods with uniform lines or patterns. It is stainless steel and has a conveniently placed hole for hanging.

B105

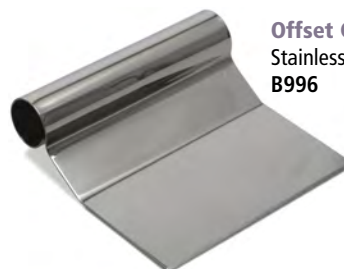


Chocolate Spatulas

For spreading or smoothing melted chocolate. Great for wiping chocolate molds. Also for making curls. Stainless steel, semi-flexible blade. Plastic frame and handle.

B950 7" across.

B950-A 8.75" across.



Offset Chocolate Scraper

Stainless steel. 3.75" length x 4.75" width. **B996**



a. Powdered Sugar Sieve

Strong plastic frame (polycarbonate/polystyrene) with thin, stainless steel wire (0.2mm). Mesh openings are only 0.5mm. 7.5" diameter x 4.25" height.

U640

b. Fine Mesh Flour Sieve

Strong polycarbonate plastic frame with thin, stainless steel wire (0.24mm). 12" diameter x 4.33" height.

U641



c. Large All-Purpose Sieve

Frame constructed from dent-resistant aluminum. Screen is tinned steel mesh. 14 mesh, 16" diameter x 3.5" height.

U500

U500S-14 Medium replacement screen.

U500S-18 Fine replacement screen.

U500S-22 Extra fine replacement screen.

d. Sieve

12" diameter stainless steel flour sieve. #20 mesh not replaceable. Made in Asia.

U100



Revolving Cake Decorating Stand

0.13" thick aluminum alloy top on heavy white enamelled cast iron base. Precision machined pivot and bearing for smooth rotation. 12" diameter x 5" height.

B605



Cake Saws

Enamelled steel frame with 2 carbon steel adjustable blades. Blades are 16.5" length. Frame is 19" overall.

B784



Deluxe Baker's Scale

Stainless steel platters and balance mechanism. Epoxy coated, metal base. Rubber foot pads. Plastic scoop. Capacity: 16 pounds by 0.25 oz. Four weights: 1 pound, 2 pounds, 4 pounds and 8 pounds. 19.75" length x 7.5" width x 9" height. Made in USA.

U802

U802-Scoop Extra plastic scoop.

For other scales, see Utensils section on page 77.

Magnetic 2-Piece Chocolate Molds

Two pieces (bottom & sides) are held tight by magnets. Pull them apart and line the bottom with a transfer sheet. Put back together and fill like any other chocolate mold. Each mold measures 10.75" length x 5.38" width x 0.63" height. Chocolates come out approximately 0.5" height. Made in Italy of food safe rigid plastic.



	NAME	SIZE OF FORMS (MM)	NUMBER OF FORMS
K851	Oval	30 x 20	28
K852	Round	25	28
K853	Square	25	28
K854	Tear Drop	30 x 22	28



	NAME	SIZE OF FORMS (MM)	NUMBER OF FORMS
K855	Frame	35 x 30	15
K856	Fluted Round	35	15
K857	Small Heart	33 x 33	15

Professional Quality Chocolate Molds

Made in Europe of food safe, clear, rigid polycarbonate. Very detailed and extremely well made. **These molds are 10.5" length x 7" width.**



	NAME	SIZE OF FORMS (MM)	NUMBER OF FORMS
K549	Pinstripe Cube	22.5 square	24
K545	Twisted Cylinder	25 diameter x 20	54
K546	Lined cube	20 square	54



	NAME	SIZE OF FORMS (MM)	NUMBER OF FORMS
K312	Medium Hearts	25 x 30 x 14	28
K114	Mini Hearts	22 x 21 x 8	60
K556	Wave Rectangle	33 x 25 x 12	24



	NAME	SIZE OF FORMS (MM)	NUMBER OF FORMS
K562	Indented Slope	30 x 20	24
K557	Crest	30 x 23 x 18	24
K561	Split Rectangle	30 x 24 x 12	24



	NAME	SIZE OF FORMS (MM)	NUMBER OF FORMS
K575	Twin Peaks	30 x 25 x 15	24
K516	Fleur de Lys	30 x 35	28
K554	Round Swirl	29 x 18	24



	NAME	SIZE OF FORMS (MM)	NUMBER OF FORMS
K550	Cylinder	20 diameter	36
K547	Peaked Mound	25 x 30	36
K551	Grooved Rectangle	20 x 30	36



	NAME	SIZE OF FORMS (MM)	NUMBER OF FORMS
K300	Rose Design	34 x 30 x 20	24
K555	Gothic Triangle	33 x 33 x 15	24
K200	Kugelhopf	30 x 18	35



	NAME	SIZE OF FORMS (MM)	NUMBER OF FORMS
K206	Ridged Dome	30 x 18	40
K207	Square	26 x 26 x 15	36
K209	Diamond	37 x 26 x 13	28



	NAME	SIZE OF FORMS (MM)	NUMBER OF FORMS
K576	Notched Rectangle	26 x 20 x 21	28
K577	Notched Cylinder	24 x 21	28
K578	Notched Dome	28 x 19	28



	NAME	SIZE OF FORMS (MM)	NUMBER OF FORMS
K513	Ridged Pyramid	40 x 40 x 40	18
K514	Tilted Cone	35 x 40	24
K501	Dot Bar	35 x 25 x 18	28



	NAME	SIZE OF FORMS (MM)	NUMBER OF FORMS
K305	Dome	30 x 20	32
K306	Log	35 x 18 x 16	44
K307	Cherry	30 x 22	32



	NAME	SIZE OF FORMS (MM)	NUMBER OF FORMS
K579	Slot	26 x 19 x 16	28
K580	Half Pipe	27 x 23 x 14	28
K581	Step	26 x 19 x 16	28



	NAME	SIZE OF FORMS (MM)	NUMBER OF FORMS
K507	Cherry Swirl	30 x 25	28
K504	Victorian	43 x 25 x 25	24
K509	Fleur Diamond	45 x 30 x 25	24



	NAME	SIZE OF FORMS (MM)	NUMBER OF FORMS
K310	Pyramid	26 x 26 x 22	32
K308	Oval Swirl	33 x 26 x 20	32
K317	Elegance	35 x 25	32



	NAME	SIZE OF FORMS (MM)	NUMBER OF FORMS
K301	Fluted Oval	37 x 23 x 15	36
K536	Interlocking	10 square x 5	28
K303	Turban	28 x 21	40



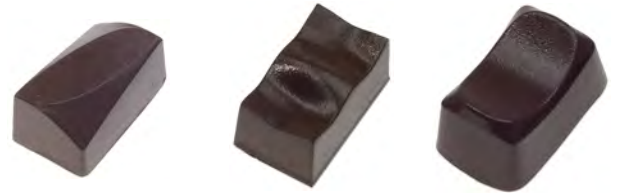
	NAME	SIZE OF FORMS (MM)	NUMBER OF FORMS
K520	Hexagonal	35 x 40	20
K521	Oblong	13 x 45	36
K522	Triangle Log	22 x 30	28



	NAME	SIZE OF FORMS (MM)	NUMBER OF FORMS
K570	Volcano	32 x 22 x 15	30
K571	Drop	30 x 30 x 15	30
K572	Cats Eye	32 x 24 x 15	30



	NAME	SIZE OF FORMS (MM)	NUMBER OF FORMS
K211	Bar	31 x 21 x 11	36
K212	Geodesic Dome	30 x 20	40
K110	Leaf 1	60 x 40 x 5	15



	NAME	SIZE OF FORMS (MM)	NUMBER OF FORMS
K567	Abstract	30 x 18 x 15	30
K568	Terrain	30 x 18 x 15	30
K569	Thumbprint	32 x 19 x 15	30



	NAME	SIZE OF FORMS (MM)	NUMBER OF FORMS
K214	Plain Square	24 square x 15	40
K216	Bordelais	24 x 20	40
K542	Rectangular Tablet	22 x 15 x 8	16



	NAME	SIZE OF FORMS (MM)	NUMBER OF FORMS
K573	Ornament	34 x 25 x 15	30
K563	Indented Rectangle	30 x 18 x 15	30
K564	Bridge	31 x 20 x 16	30



	NAME	SIZE OF FORMS (MM)	NUMBER OF FORMS
K565	Shark's Tooth	35 x 20 x 15	30
K909	Tear Drop	30 x 40	24
K582	Twist	28 x 20 x 17	28



Chocolate Cup Molds

	SIZE OF FORMS (MM)	NUMBER OF FORMS
K543	50	12
K517	25 x 33	32



Spoon-Shape Chocolate Mold
10 spoon shapes, each 114mm length.
K531



Demisphere Molds

	SIZE OF FORMS (MM)	NUMBER OF FORMS
K910-60	58	8
K910-50	50	12
K910-55	54	8
K910-65	63	6
K901	40	15



Assortment
4 each of 6 designs. 31.75mm approximate diameter of each cavity. 24 forms.
K511



Assortment
6 assorted shapes. 43mm x 25mm x 25mm. 24 forms.
K314



	NAME	SIZE OF FORMS (MM)	NUMBER OF FORMS
K584	Twist Bar	112 x 33 x 16	8
K907	Bar Mold	127 x 38 x 16	5
K585	Notched Rectangle	119 x 29 x 10	8



	NAME	SIZE OF FORMS (MM)	NUMBER OF FORMS
K602	7 Bar Chocolate	127 x 32	7
K540	4 Section Bar	115 x 32.5	8
K541	5 Section Bar	110 x 40	8



2- Piece Magnetic Truffle Molds

Two pieces (bottom & top) are held together by magnets. Pour chocolate into holes on top and let set. Put filling in with pastry bag and tube. Then seal. When ready, separate top & bottom pieces.

	NAME	SIZE OF FORMS (MM)	NUMBER OF FORMS	FILLING HOLES (MM)
K858	Round Smooth	25 diameter	32	11 diameter
K859	Round Textured	25 diameter	32	11 diameter



	NAME	SIZE OF FORMS (MM)	NUMBER OF FORMS
K548	Mini Square	15 x 15	108
K215	Demisphere	30	44

These molds are 10.6" length x 8.7" width.



	NAME	SIZE OF FORMS (MM)	NUMBER OF FORMS
K589	Stepped Rectangle	17 x 37 x 17	21
K593	Tilted Oval	32 x 23 x 19	21
K591	Pulse	17 x 37 x 17	21

These molds are 10.75" length x 5.25" width.



	NAME	SIZE OF FORMS (MM)	NUMBER OF FORMS
K503	Pineapple	35 x 25 x 20	24
K506	Gift Box	30 x 30 x 20	24
K528	Large Hearts	30 x 35	18

These molds are 10.75" length x 5.25" width.



	NAME	SIZE OF FORMS (MM)	NUMBER OF FORMS
K592	Dome with Swirl	30 d x 18	21
K594	Spital Tower	30 d x 19	21
K595	Pinwheel	30 x 30 x 18	21

These molds are 10.75" length x 5.25" width.



	NAME	SIZE OF FORMS (MM)	NUMBER OF FORMS
K596	Tri Cube	22 x 22 x 20	21
K598	Knot	26 x 23 x 21	21
K600	Tall Gothic Triangle	22 x 21 x 28	24

These molds are 10.75" length x 5.25" width.



	NAME	SIZE OF FORMS (MM)	NUMBER OF FORMS
K597	Ridged Cylinders	26 d x 16	21
K587	Twisted Rectangle	14 x 37 x 19	21
K588	Ridged Rectangle	15 x 37 x 15	21

These molds are 10.75" length x 5.25" width.



	NAME	SIZE OF FORMS (MM)	NUMBER OF FORMS
K590	Bolt	16 x 37 x 16	21
K601	Tall Cube	18 x 18 x 28	24
K906	Alphabet	38 x 6.35	26

These molds are 10.75" length x 5.25" width.

The nubs, holes, and guiding lips around the edges of the cavity, (these ensure that the molds line up) may make it difficult to scrape the chocolate when using the molds to make half egg shapes.



Egg Molds

Each mold produces half eggs.

	EGG SIZE	FORMS
K800	2.13"	12
K801	4"	8
K802	6"	3
K803	8"	2
K804	12"	1
K805	16"	1
K806	25"	1
K807	30"	1



Rabbit With Basket

2 piece mold (front and back).
Produces one 13.5" figure.
K830



Rabbit with Backpack

2 piece mold with clips (right & left sides) produces one 9" figure.
K820



Classic Sitting Rabbit- Large

2 piece mold (right & left sides) produces one 9" figure.
K833



Standing Rabbit

1 Piece mold (right & left sides)
Produces two 7.75" figures.
K835



Rabbit with Egg Basket

2 pieces mold (right & left sides) produces one 7.5" figure.
K836



Small Rabbit with Basket

2 piece mold (right & left sides) produces four 5.3" figures.
K837



Big Eared Rabbit

2 piece mold (front & back) produces six 5" figures.
K832



Classic Sitting Rabbit- Medium

1 piece mold (left & right sides) produces two 7" figures.
K834

Whipped Cream Makers and Soda Siphon



Whippers are perfect for making “foamed” desserts, appetizers, sauces and purees. The soda siphon will carbonate your beverages.



Gourmet Whip Plus from iSi of Austria
Stainless steel cannister and dispenser. Will not rust. Three different nozzles. Special heat resistant, silicone gasket. **Can be used with hot foods.**
B100 0.5 pint size. 8" height.
B938 1 pint size. 12" height.
B939 1 quart size. 14" height.



Thermo whip Plus from iSi of Austria
Stainless steel cannister and dispenser. Will not rust. Three different nozzles included. Maintains cool temperatures for hours or retains warm temperatures for fresh short-term consumption. Double-walled vacuum insulation protects hands from temperature extremes. 1 pint size. **Great for hot and cold foods.** 14" height.
B934



Profi from iSi of Austria
Stainless steel cannister and dispenser. Will not rust. For cold or warm foods. One decorating tip included. **Not suitable for hot foods.**
B935 1 pint size. 12" height.
B936 1 quart size. 14" height.

Classic Soda Siphon
Brushed aluminum cannister. Features a removable measuring tube for easy cleaning and to prevent overfilling. Secure neck threading and a pressure-regulating system provide maximum safety. 1 quart size. 12" height.
B992



Cream Chargers
B937-10 Box of 10.
B937-24 Box of 24.
B937-50 Box of 50.

Soda Chargers
B993-10 Box of 10.
Use with B992.



isi Injector Tip Set
For filling & decoration. Stainless steel.
B948



isi Decorator Tip Set
For filling and decoration.
B947



isi Stainless Steel Tips
Stainless steel.
B946