



TAKE CONTROL WITH THE
FIRST ALL-SOLID, LOW-TEMP
WAREWASHING SYSTEM

Apex™ TSC Double

- ▲ Integrated Apex system tracks operational efficiency.
- ▲ Solid Apex TSC products deliver unsurpassed cleaning results and greater convenience.
- ▲ Energy Star rating helps reduce operating costs.

.....

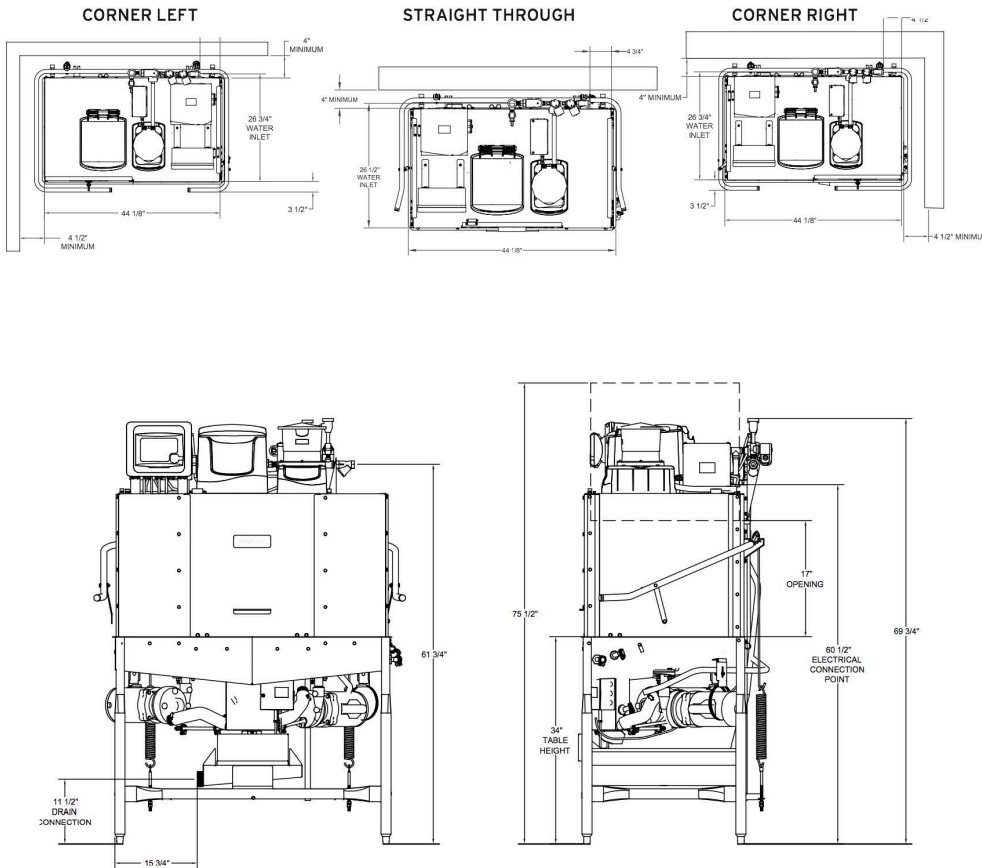
Solid Apex TSC products deliver unsurpassed cleaning results and greater convenience – through lightweight, compact, non-caustic formulas that help you control cost and waste.

.....



Superior Results, 24/7 Service and a Great Financial Option.

SPECIFICATIONS



PRODUCTS FOR USE IN THE APEX TSC MACHINE

Apex Power Dishmachine Detergent
 17063 4-6.75 lb
 17062 6-6.75 lb

Apex Power Plus Dishmachine Detergent
 17091 4-6.75 lb

Apex Ultra Dishmachine Detergent
 17051 4-6.75 lb

Apex Chlorine Free Machine Detergent
 6100606 4-6.75 lb
 6100607 6-6.75 lb

Apex Rinse Additive
 16811 2-2.5 lb
 6100021 1-2.5 lb

Apex Heavy Duty Rinse Additive
 16818 2-2.5 lb

Apex Solid Sanitizer
 14821 4-1,000 pellet pouches

EPA registration number 1677-201

SPECIFICATIONS

OPERATING CAPACITY	
Racks per Hour (NSF rating)	78
OPERATING CYCLE (SECONDS) NORMAL	
Wash Time	53
Dwell Time	20
Rinse Time	14
Load Time	5
Total Cycle Time	92
OPERATING CYCLE (SECONDS) HEAVY	
Wash Time	118
Dwell Time	17
Rinse Time	15
Load Time	5
Total Cycle Time	155
OPERATING CYCLE (SECONDS) SUPER HEAVY	
Wash Time	208
Dwell Time	17
Rinse Time	15
Load Time	5
Total Cycle Time	245
OPERATING TEMPERATURES	
Wash (minimum)	120°F
Sanitizing Rinse (minimum)	120°F
WATER CONSUMPTION	
Gallons per Rack	1.17
ELECTRICAL RATINGS	
Wash Pump Motor, Horsepower	3/4 hp
WASH CHAMBER	
Height	17"
WEIGHT	
Machine Weight	365 lb
Shipping Weight	400 lb
UTILITY REQUIREMENTS, ELECTRICAL	
Voltage	115V
Frequency	60Hz
Phase	1 ph
Total Amperage	23 A
Minimum Electrical Circuit	30 A
WATER	
Flow (minimum), gal/hour at 100% capacity	60
Waterline Size (minimum)	1/2"
Flow Pressure (recommended)	15-25 psi
Incoming Temperature (minimum)	120°F
Incoming Temperature (recommended)	140°F
DRAIN	
Flow (minimum), gal/min	1
Drainline Size (minimum)	2"

