

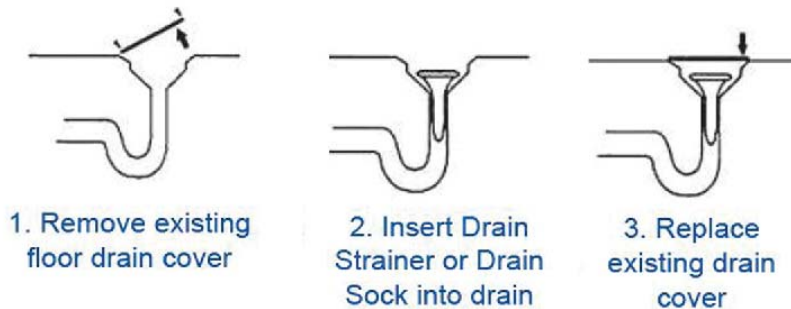
Standard Operating Procedure: Drain Socks for floor Drains



Installation:

Tools needed: Screwdriver, gloves

1. Remove existing floor drain cover. Place drain screws in safe place.
2. Insert Drain Sock into the floor drain. Ensure it will sit above the drain pipe, but below the drain cover. Tuck the drain sock down into the drain if needed.
3. Replace Existing Drain Cover



Awareness & Education:

Ensure all staff who are responsible for facility maintenance, plumbing, and floor cleaning are aware of the product installation.

Monitor for fullness:

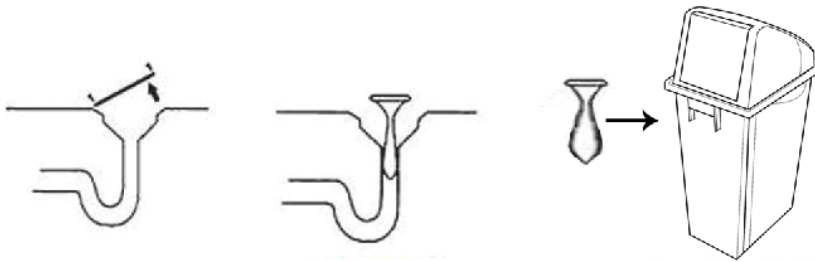
The Drain Sock will collect debris that would have otherwise been washed down the floor drain and into the facility plumbing system. The rate at which the Drain Sock fills up will vary depending on the drainage load. After initial installation, monitor the Drain Sock(s) at least once a week to determine if the Drain Sock is full. A Drain Sock is considered full when it is approximately 50% full or when water drainage begins to slow. Take note of how long it takes for the Drain Sock(s) to reach the full status. Include Drain Sock Emptying & Replacement with your scheduled facility maintenance procedures.

Empty & Replacement Schedule for Drain Sock(s): _____

Empty & Replace:

Tools needed: Screwdriver, gloves

1. When the drain sock is full of debris, remove the existing drain cover.
2. Reach into the drain and pull out the drain sock.
3. Empty the contents of the drain sock into a trash or compost
4. Inspect the Drain Sock for damage such as holes or tears. If drain sock is intact, put back into the drain. If Drain Sock is damaged, throw away and replace with a new one. Do not continue using damaged Drain Socks.
5. Replace Existing Drain Cover



1. Remove existing floor drain cover

2. Remove Drain Sock

3. Empty Drain Sock into trash or compost



4. Insert existing or new Drain Sock into Drain



5. Replace existing drain cover