

INDIVIDUAL PLASTIC SERVING PIECES

These European designed, serving pieces are stylish and elegant. They can be used for off-premise catering, receptions, pool-side parties, airplane or boat service, picnic baskets and more. Attractive but not expensive.

GEOMETRIC DISHES



GEOMETRIC DISH

Clear. 1.63" square x 3.22" height, 3.3oz.

R542 1.5

LID

R598 1.5



MEDIUM GEOMETRIC DISH

Clear. 2.30" top square x 2.95" height, 6oz.

R542 2.38

LID

R598 2.38



LARGE GEOMETRIC DISH

Clear. 2.80" square x 2.80" height, 7oz.

R542 2.75



GEOMETRIC DISH

1.95" square x 1.75" height, 1.75oz.

**SEA-GREEN
R487**

**CLEAR
R542 2**

**CLEAR LID
R487 C**



GEOMETRIC DISH WITH SWIRLS

1.87" square x 1.77" height, 1.75oz.

R834



CORRUGATED GEOMETRIC DISH

1.9" square x 1.70" height.

R881 2

2.85" square x 2.75" height.

R881 2.75

CAN BE USED FOR BAKING UP TO 375 °F.



RECTANGULAR PRISM

2.3" length x 1" width x 1.2" height, 3oz.

R641



SQUARE MINI GLASS

1.7" square x 1.7" height, 2oz.

R874 2



SQUARE GLASS

2.8" square x 2.5" height, 8oz.

R874 8

DISPOSABLE



FROSTED MINI CUP
1.8" diameter x 1.65" height, 2oz.
R929



FROSTED MINI CUBE
1.3" square x 1.18" height, 1.25oz.
R930



FROSTED MINI OVAL DISH
2.1" length x 1.45" width, 0.72oz.
R928



MINI JAM POT WITH SCREW TOP LID
Plastic jar. 1.35" height x 1.75" diameter, 1oz.
R927



DIAMOND SPHERE
1.5" diameter x 1.5" height, 2.5oz.
R1001



CLEAR MINI EARED DISH
3.25" length x 2.5" width x 0.5" height,
1oz.
R482



MINI EGG DISH
3.2" length x 2.2" width x 1.2" height, 1.4oz.
R1008



SEA-GREEN SQUARE DISH
2.5" square x 0.5" height, 1oz.
R486



EGG CUPS

	HEIGHT	DIAMETER	CAPACITY	COLOR
R833	2.3"	1.5"	2oz	White
R1015	1.6"	1.4"	1.5oz	White
R1016	1.6"	1.4"	1.5oz	Black

CLEAR SQUARE DISH
2.33" square x 0.5" height, 1oz.
R496



SPHERE CONTAINER WITH SCREW CAP
3.5" diameter x 3" height, 8 oz capacity.
R875



MINI FROSTED BOWL
2.7" diameter x 1.5" height, 1.75oz.
R488

FROSTED BOWL
4.25" diameter x 2.13" height, 6oz.
R488 4.25



MINI OPEN FACE SPHERE
2.3" diameter x 2.3" height.
1.6" opening diameter, 2oz.
R923 2

OPEN FACE SPHERE
4.33" diameter x 4.33" height.
2.79" opening diameter, 10oz.
R923 10



MINI CHAMPAGNE "GLASS"
2.25" diameter x 5" height, 2.7oz.
R1007



MINI MARTINI "GLASS"
2.75" diameter x 3" height, 1.8oz.
R1005



MINI CORDIAL "GLASS"
1.5" diameter x 3.3" height, 1.6oz.
R1006



CLEAR VERRINE "GLASS"
1.25" diameter x 3" height, 1.9oz.
R640



CLEAR MAXI "GLASS"
1.35" base diameter, 1.68" top diameter.
3.25" height, 2oz.
R484
LID
R599



CLEAR LARGE MAXI "GLASS"
Frosted. 3.75" height x 2" diameter, 5oz.
R484 2



CLEAR PLASTIC TULIP "GLASS"
2" diameter x 3.15" height, 5oz.
R741



"BAROQUE" MINI GLASSES
1.87" diameter x 2.5" height, 2oz.
R836
2.62" diameter x 3" height, 5oz.
R836 5



CRESCENT DISHES
1.25" diameter, 3" height, 2oz.
R926
1.19" diameter, 2" height, 1oz.
R1018

PLASTIC MASON JARS

Just like traditional canning jars, made from high quality transparent plastic with rubber gaskets and metal hardware.

	DIAMETER	HEIGHT	CAPACITY
A. R1011 A	1.8"	2.4"	1.5oz
B. R1011 B	1.9"	3.2"	2.5oz
C. R1011 C	4.1"	2.5"	10oz



DISPOSABLE



MINI OLD FASHIONED GLASS
2" diameter x 2" height, 2.7oz.
R1009



MINI BARREL GLASS
2" diameter x 2" height, 2.7oz.
R1010



CLEAR MINI "GLASS"
1.77" diameter x 2" height, 1.5oz.
R483 C
LID
R599



MINI "GLASS" CLEAR AND FROSTED
1.76" diameter x 2.5" height, 2oz.
R483 F
LID
R599



CLEAR MINI VERRINE
1.5" height x 2" diameter, 1.5oz.
R832



MINI BISTRO GLASS
1.5" diameter x 1.75" height, 1.6oz.
R1004



CLEAR DOUBLE WALL APERITIF GLASS"
2" diameter x 2.5" height, 2.5oz.
R532



SMALL CLEAR CUP
2.85" diameter x 2" height, 6oz.
R736



TAPERED "GLASS" WITH BASE
2.5" diameter x 2.17" height, 2.36oz.
R978

CLEAR CUP
3" diameter x 2" height, 8oz.
R531

LID FOR R531
R531 C



SQUARE STACKABLE GLASS
1.5" square x 2.3" height, 2.5oz.
R908



RECTANGULAR STACKABLE GLASS
4.6" length x 1.5" width x 2.3" height, 8oz.
R908 8



SQUARE STACKABLE GLASS
1.5" square x 4.5" height, 5oz.
R908 5

STYLISH DESIGN

These European designed, plastic serving pieces are stylish and elegant. Designed for appetizers or hors d'oeuvres, for buffets, pool, boat or party service. Disposable or re-usable.

SPOONS

Perfectly balanced, matte finish, available in black or white, they have the look of china yet can be disposable or re-usable.

A. APPETIZER SPOONS
4.75" length x 1.56" width.

BLACK **WHITE**
R510 B1 **R510 W1**

B. AIR SPOONS
5" length x 1.5" width.

BLACK **WHITE**
R994 B **R994 W**

C. DECO SPOONS
The subtle floral pattern adds a touch of elegance to these plastic serving pieces. 5" length x 1.56" width.

BLACK **WHITE**
R920 B1 **R920 W1**



D. PICKS
3.5" length.

BLACK **WHITE**
R520 B **R520 W**

E. SKEWERS
7" length.

BLACK **WHITE**
R521 B **R521 W**



DOUBLE TASTING PLATES
Matte finish. Bowls have a 3 oz and 1.5oz.
7.5" length x 4.5" width.

WHITE **BLACK**
R620 W1 **R620 B1**



TASTING PLATES
Matte finish. Elongated corner for holding.
5.75" length x 4.25" width, 1.5oz.

BLACK **WHITE**
R515 B **R515 W**



SMALL APPETIZER "GLASS"
Clear. 2.25" height x 1.9" diameter, 2oz.
R530 A



F. LARGE COCKTAIL PLATE WHITE
Has the look of chinaware and a convenient 1oz impression that is great for additional sauces and also acts as a holder for item **R805** cocktail glass.
11.5" length x 8.25" width.

PACK OF 96 **PACK OF 24**
R804 W **R804 W24**

G. COCKTAIL GLASS CLEAR PLASTIC
3.25" diameter x 2.25" height, 9oz.

PACK OF 420 **PACK OF 35**
R805 **R805 35**

DISPOSABLE

TINS

Give your guests the impression they are getting something off the supermarket shelf when in reality you are presenting them your latest culinary creation. These aluminum sardine tins offer you a unique way to present dishes at your restaurant or next catered event.



RECTANGULAR ANCHOVY TIN
4" length x 2" width x 0.75" height, 3oz.
R901



RECTANGULAR SARDINE TIN
4.3" length x 2.6" width x 1.1" height.
R870



MINI CAN OVAL ALUMINUM TIN
4.5" length x 2.75" width x 1.18" height.
R877



IMITATION CAVIAR TIN
2.6" diameter x 0.75" height, 1.5oz.
R899



ROUND TIN WITH PULL TAB LID
3" diameter x 1.25" height, 4oz.
R900



HAND CRIMPER FOR R900
Crimps lids on Round Tin with Pull Tab Lid (R900).
R900 S



FILLABLE ALUMINUM TUBES

		LENGTH	CAPACITY
A. R876 10	Large	5.5"	1oz
B. R876 5	Medium	4.5"	0.5oz
C. R876 2	Small (Fine Tip)	3.5"	0.24oz



FILLING GRID FOR ALUMINUM TUBES (SMALL & MEDIUM)
Holds 25 tubes for filling or display.
Works with **R876 2** & **R876 5**.
Not for **R876 10**.
R876 G



ALUMINUM TUBE CRIMPING PLIERS
7" length.
R876 P



LIPSTICK TUBE
0.73" diameter x 2.90" height.
R905



MOLD FOR LIPSTICK TUBE
This mold allows you to make the insert for the lipstick tube (R905). 5 molds with 6 cavities.
R905 M

FAUX SLATE

These disposable service ware have the look and texture of real slate, providing a natural look to your presentation.



FAUX SLATE RECTANGULAR PLATE
5" length x 2.5" width.
R925



FAUX SLATE RECTANGLE PLATE
7" length x 3.5" width.
R739



FAUX SLATE OVAL PLATE
7" length x 5" width.
R738



FAUX SLATE ROUND DISH
3.25" diameter.
R737 3
5" diameter.
R737 5



FAUX SLATE SQUARE DISH
2.5" square x 0.40" depth.
R906



FAUX SLATE TRAY
10.75" width x 7.75" length.
R835

MICROWAVE SAFE DISHES



MINI OVAL COCOTTE WITH LID
2.75" length x 1.75" height, 2oz.
R743



ROUND COCOTTE WITH LID
2.75" diameter x 1.82" height,
2oz. Microwave safe.
R882



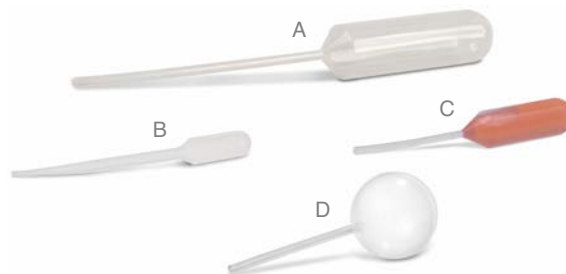
MICROWAVABLE PAELLA
7" diameter x 0.78" height.
Microwave safe.
R883

PIPETTES

Used for transferring or delivering measured quantities of liquids. A unique tool for serving hors d'oeuvres with a sauce and plating.



	LENGTH	CAPACITY
A. R831	6"	15ml
B. R690 3.5	3.5"	1.7ml
C. R690	3.5"	4ml
D. R1012	2.8"	6ml



DISPOSABLE



BENTO CARRYING BOX
6.9" square x 5.75" height. Holds up to 4 Sea-Green Bento Plate (R493).
R493 B



SEA-GREEN BENTO PLATE
6.75" square x 1.38" height.
R493

CLEAR COVER
R493 C



LAB DISH
6.2" diameter x 1.3" height, 24oz.
R1026



ORGANIC WAVE BOWL
4" length x 3.75" width x 2.75" height.
R1027



A



B

FOOTED PLATES

A. RECTANGULAR
5" length x 2.5" height.
R748

B. SQUARED
5" square.
R748 5



SEA-GREEN SQUARE APPETIZER PLATE
5" square x 0.38" height.
R494

COVER
1" height.
R494 C

FLUTES STANDS



CLEAR SIX FLUTE STAND
5.5" height x 14" length. 1.4" diameter openings.
Fits **R489**.
R535



CLEAR "CRYSTAL" PLASTIC PALETTE TRAY
9.5" diameter. Fourteen 1.25" diameter openings.
Fits **R489**.
R490



CLEAR "CRYSTAL" FLUTE
1.88" top diameter x 6.75" height, 3oz.
R489



CLEAR 16 MINI FLUTE STAND
6.5" length x 6" width x 2.75" height.
0.68" diameter openings. Fits **R642**.
R642 16



FLUTE AND TUBE STAND
23.5" length x 3.17" height. 10 holes
for use with **R642**, **R489** and **R592**.
R987



MINI FLUTE
1.25" top diameter x 4.5" height, 1.5oz.
R642



STAR DISPLAY
1.45" hole diameter. Fits cone **R489**,
R1024 M, **R1024 L**, **R657 5**, **R657 3.5**,
R903 L and **R903 M**.
R1025



16 FLUTE DISPLAY STAND
Includes 16 cone holding rods. 8.5" square base.
8 pieces 9.8" height. 8 pieces 13.7" height. The
diameter for the opening on the rods is 0.9".
R937



FROSTED CLEAR TUBE "GLASS"
0.97" diameter x 5.75" height, 2oz.
R592

DISPOSABLE

JB PRINCE EXCLUSIVE CONE TRAYS

Serve finished product by lifting serving tray directly from production stand or place the brushed stainless steel stand directly on the buffet table.



CONE SERVING TRAY

Each attractive lightweight serving tray is made from food-safe acrylic and holds 15 cones. 12.25" length x 6.88" width x 0.2" thick.
R505

CONE BUFFET STAND

Each 18 gauge stainless steel tray holds 30 cones. These brushed-finished stands are excellent for buffet service or for use in production (two 15 hole acrylic serving trays fit on each stand for so that you can lift and serve). 15.88" length x 11.25" width x 3" height. Each hole is 0.75" diameter.
R500

CONES WERE CREATED USING OUR LADYLOCK FORM:



LADYLOCK FORM
Stainless steel. Small.
3.5" length x 1.5" x 0.25".
B620

UTENSILS



MINI SPOON
3.5" length.
R608 S

MINI FORK
3.5" length.
R608 F



"METAL" SPOON
4" length.
R865

"METAL" FORK
4" length.
R866



"SILVER" SPOON
4" length.
R742 S

"SILVER" FORK
4" length.
R742 F



MINI SPOON
4.25" length.
R685

MINI FORK
4.25" length.
R684



MINI SPOON
3.75" length.
R683

MINI FORK
3.75" length.
R682



STARCK CLEAR MINI SPOON
Created by the famous French designer Philippe Starck. 4" length.
R735



LONG COCKTAIL SPOON
Clear. 7.5" length.
R534



MEDIUM COCKTAIL SPOON
5" length.
R497



MEDIUM FORK
5.5" length.
R884

PUSH UPS (CAKE SHOOTERS)



SQUEEZE POP WITH LID
1.9" top diameter x 5.9" length,
4.5oz.
R747



STAND FOR 28 CLEAR PUSH UP
White. 15.2" length x 11.4" width x 4.3" height.
For use with **R746** & **R916**.
R746 28



CLEAR PUSH UP WITH LID
7" height overall. 3.8" height without handle.
1.75" diameter, 4oz.
R746



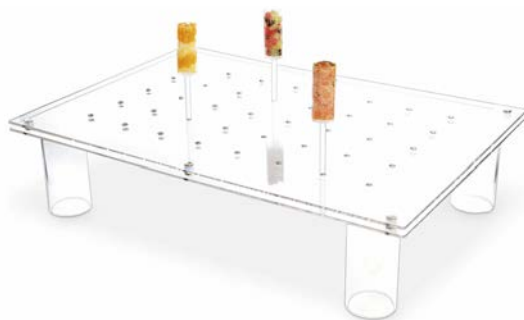
CLEAR MINI PUSH UP STAND
9.5" length x 1" width x 0.39" height.
6 holes. For use with **R740**.
R740 6



CLEAR PUSH UP PALLET TRAY
9.45" diameter. 19 holes.
For use with **R740**.
R740 19



CLEAR MINI PUSH UP
4.5" height overall. 2.12" height without
handle. 0.75" diameter, 0.63oz.
R740



CLEAR MINI PUSH UP STAND
19" length x 13" width. 40 holes.
For use with **R740**.
R740 40



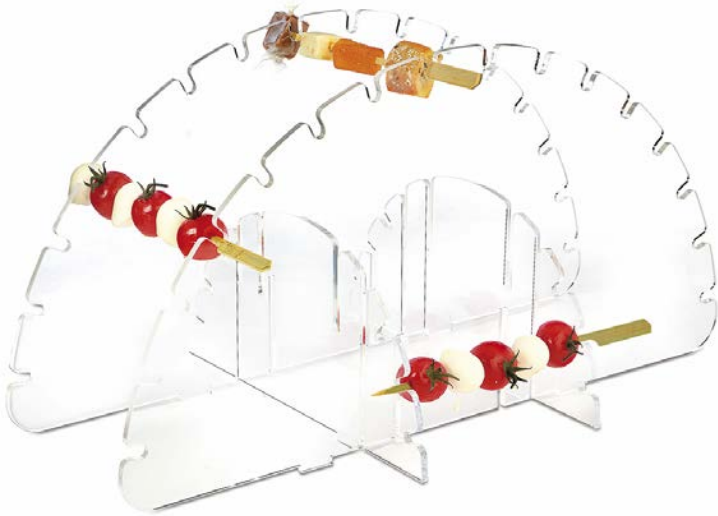
PUSH UP STAND
12" length x 3.5" height. 12 holes.
For use with **R864**.
CLEAR R864 S **BLACK R864 B**



CLEAR PUSH UP
5.82" height overall. 2.75" height without
handle. 1.3" diameter, 1.25oz.
R864

DISPOSABLE

SKEWERS AND STANDS



ARCH SKEWER DISPLAY STAND
20" height x 17" length. 22 slots.
R936



CIRCLE SKEWER/LOLLIPOP STAND
23" diameter. 28 holes.
R935

PAPER AND CORRUGATED



MINIATURE PIZZA BOX
3.5" square x 0.75" height.
R902



MINI BURGER STYLE BOX
2.5" square x 2" height.
R880



MINI TAKEOUT STYLE CONTAINER
1.18" square base. 2" square top.
2.35" height, 3oz.
R879

CORRUGATED
R880 A



PAPER APPETIZER CUP
3" height x 2" diameter.
R972



KRAFT BOX WITH WINDOW
2.8" square x 1.6" height.
R973



CONES

WHITE
1.75" diam. x 3.5" height.
R903 M

2.5" diam. x 4.75" height.
R903 L

NEWSPRINT CARDBOARD
1.75" diam. x 3.5" height.
R1024 M

2.5" diameter x 4.75" height.
R1024 L

TASTING SPOONS



CLEAR ASIAN STYLE SPOON
4.75" length, 1 tablespoon capacity.
R481



SEA-GREEN COMBINATION SPOON / FORK
4" length, 1 teaspoon capacity.
R485

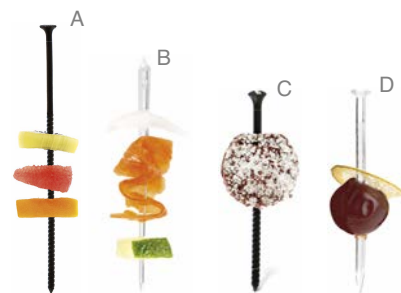


TASTING SPOON
Asian style. 4.25" length.
R593

SKEWERS

SEE BAMBOO SKEWERS ON PAGE 192.

	NAME	LENGTH	COLOR
A.	R951 Screw	5.9"	Black
B.	R492 Regular	4"	Clear
C.	R952 Screw	3"	Black
D.	R950 Screw	3"	Clear



FATA® PAPER

Fata® paper (loosely translated "Fata" means magical in Italian) an innovative product that can be made into see-through cooking pouches! It allows you to cook in a bag so that all the flavors and juices are concentrated. Then you can bring it to the table and serve with all the aroma (and drama) intact when the bag is opened. It is sold in rolls that can be easily cut, folded and tied with string or kitchen twine. Now available in convenient, pre-cut packs. The see-through pouches can be:

- Cooked directly on a hot surface.
- Heated in the microwave.
- Immersed in a water bath.
- Baked in the oven up to 425 °F.
- Immersed in hot oil, no hotter than 425 °F.
- Put in the freezer down to -50 °F.

DO NOT PUT ON AN OPEN FLAME NOR USE WITH ALCOHOL. FATA® PAPER COMPLIES WITH USA FOOD AND DRUG ADMINISTRATION REGULATIONS FOR USE WITH FOOD.



ORDERING FATA PAPER

	LENGTH	WIDTH	SHEETS
R560 10	10m	50cm	-
R560 50	50m	50cm	-
R561 50	50cm	50cm	100



KLEARCOOK PRO

The French call it "en papillote" and in Italy they call it "al cartoccio". This ancient technique of wrapping food in parchment paper or even leaves has been around for centuries.

KlearCook is the technological revolution of this cooking method using a scientifically designed material that can withstand cooking temperatures up to a maximum 230C. (446 F.) KlearCook sheets can be used in the oven, on the stove-top, on a griddle, in a deep-fryer or even in boiling water or steam.

Simply choose your preferred method of cooking using this unique shiny and clear cooking material and open up the endless possibilities of your inner gourmet. Just keep KlearCook sheets away from direct contact with flames.

Historic note: In the late 1800's Antoine Alciatore, the founder of Antoine's restaurant in New Orleans, created a dish called "Pompano Montgolfier" which was made in the "en papillote" style to honour the French Montgolfier brothers who are credited with inventing the hot air balloon. Antoine's restaurant remains the oldest family run restaurant in the USA today.

- 200 pre-cut sheets.
- 19.7" square.

R1071

